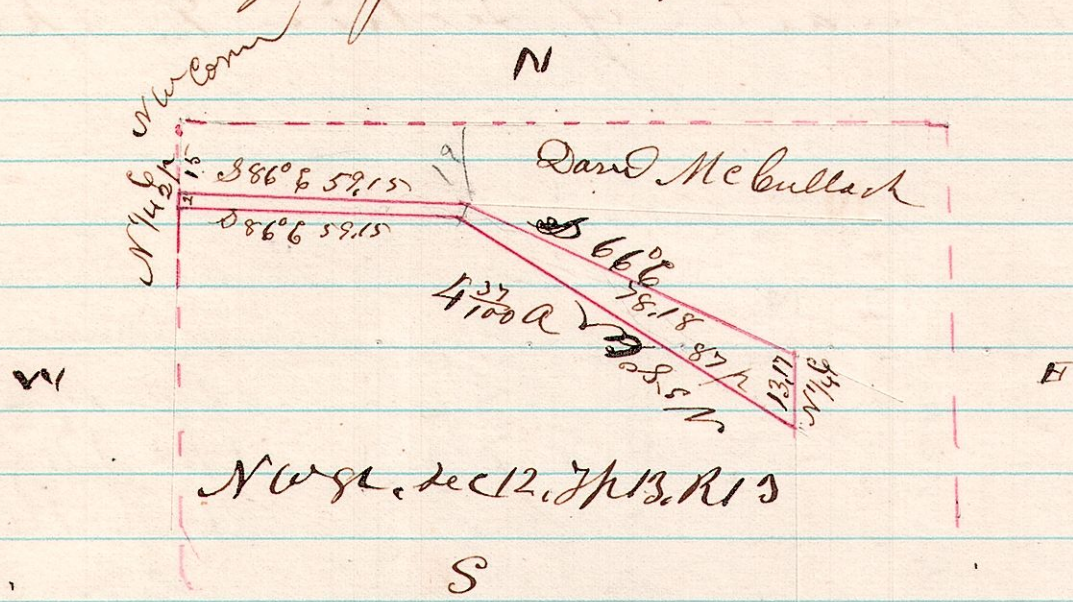


RSD
13 13 12

A Survey made for H. H. Adams. being part of
the NW 1/4 of Sec 12, Tp 13, R 13.

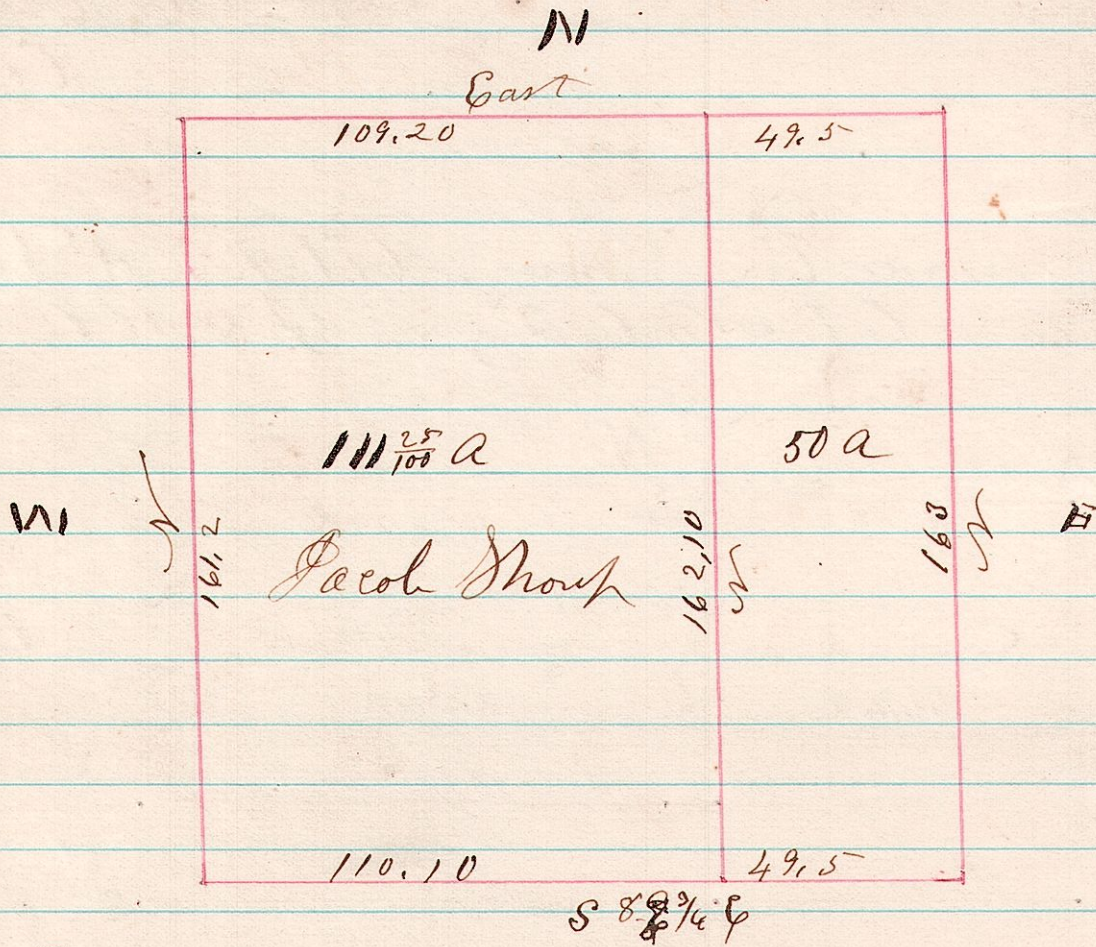


Surveyed the above May 10th 1875
H. H. Robinson
Co Surveyor

RSD

14 18 36

A Survey made for Jacob Shoup, being the
S 1/2 of Sec 36, Tp 18, R 14.



Surveyed the above May 11th 1875
H. H. Robinson
Co Surveyor