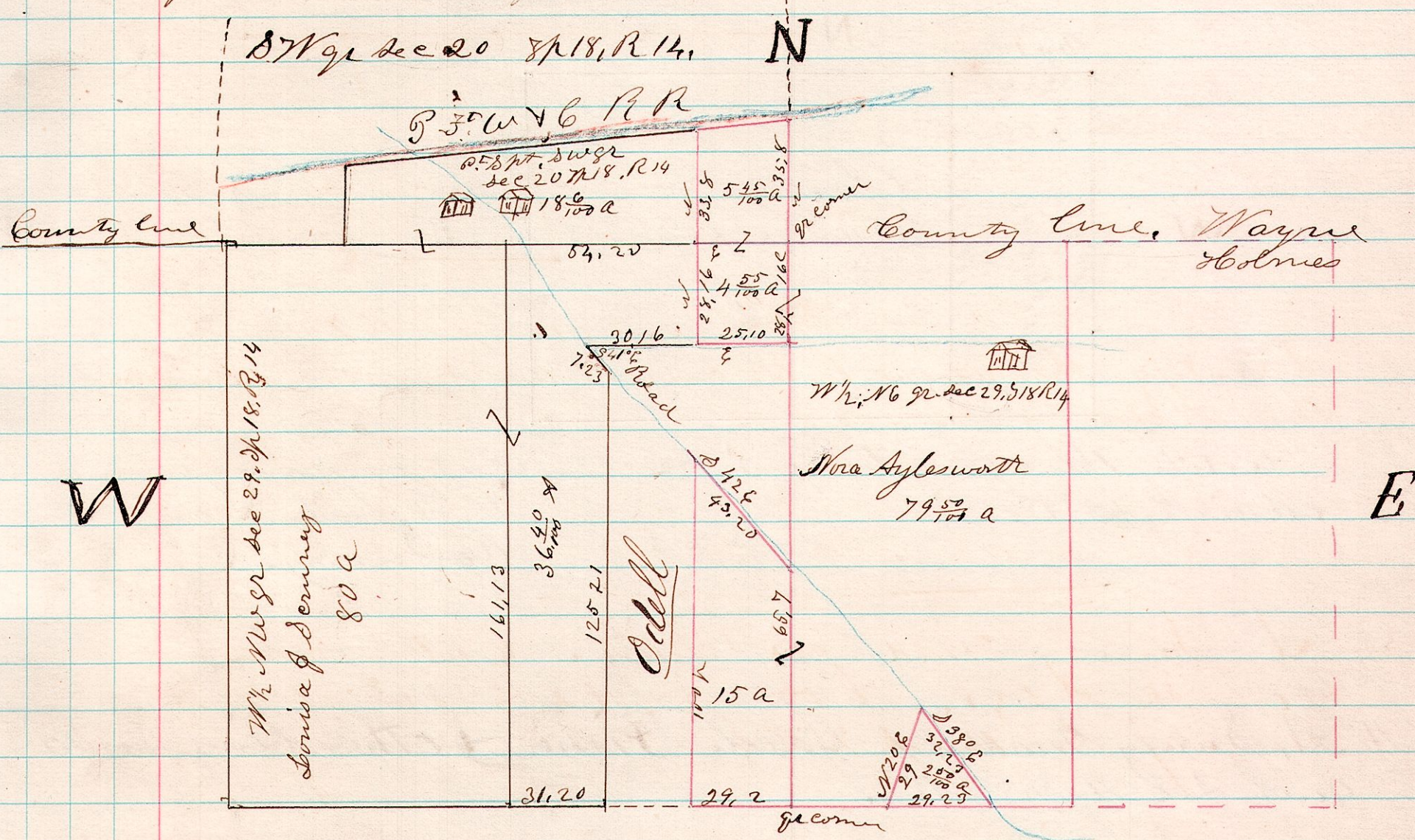


No 62

R 5 S 14 18 29 A survey made by order of court being partition case  
 Deming vs Stylesworth, being parts of sec 29, T18 R14, & part  
 of sec 20, T18 R14, Wayne Co

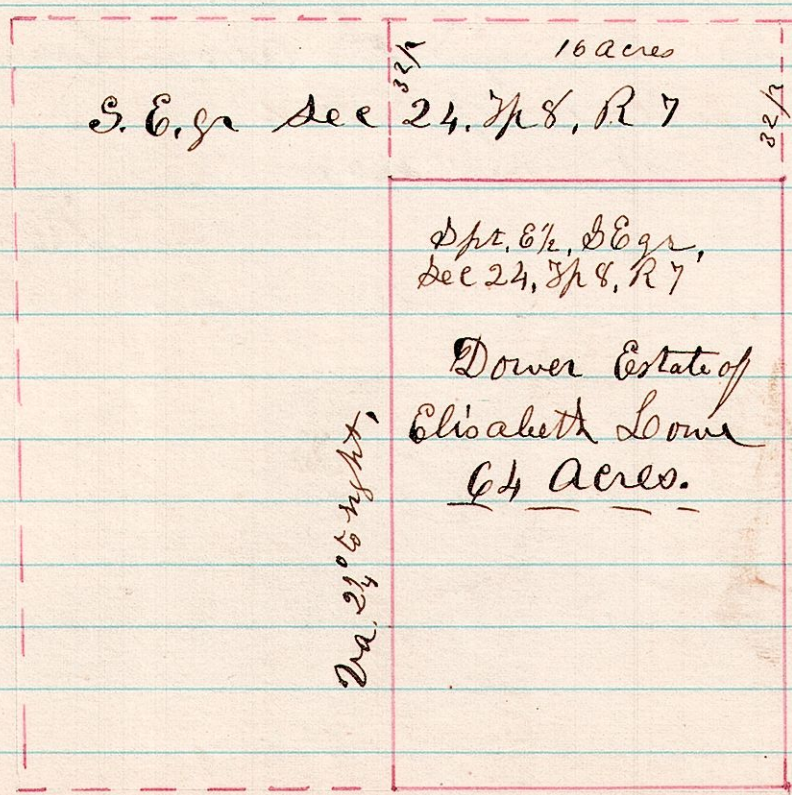


I certify the above to be a correct plat of the land  
 subject to partition in above case, the only pieces  
 surveyed were the  $5 \frac{45}{100}$  &  $4 \frac{75}{100}$  acre pieces.  
 January 29 1875  
 H. H. Robinson  
 County Surveyor

H. H. Robinson }  
 Jos Geisinger } Commissioners.  
 R. A. Torbet }  
 Jos Geisinger }  
 R. A. Torbet } Chairman

No 63

7 8 24 A survey made, being dower set off for Elisabeth  
 Lome by order of Court, being 64 acres of the south end  
 of the East half of the south east quarter of sec 24,  
 T8, R7.



H. H. Robinson }  
 Roswell Chapman } Commissioners,  
 C. W. Carpenter }  
 I certify this to be a correct  
 plat of Dower set off to  
 Elisabeth Lome  
 February 2 1875  
 H. H. Robinson  
 County Surveyor