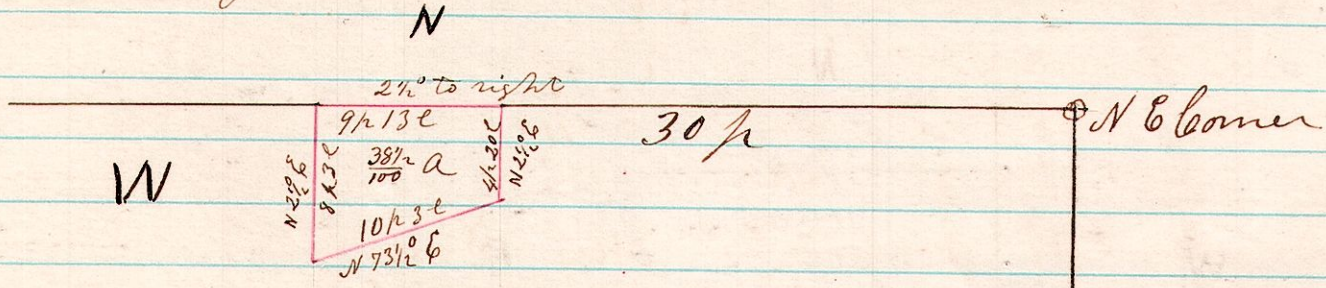


No 46

7 9 <sup>lot</sup> 20

A Survey made for Howard Courtney, being part of the north part of lot 20, 1<sup>st</sup> gr, T<sup>h</sup> 9, R 7, G<sup>l</sup> W, R, School land.



Lot 20, 1<sup>st</sup> gr T<sup>h</sup> 9, R 7, G<sup>l</sup> W, R, School Land

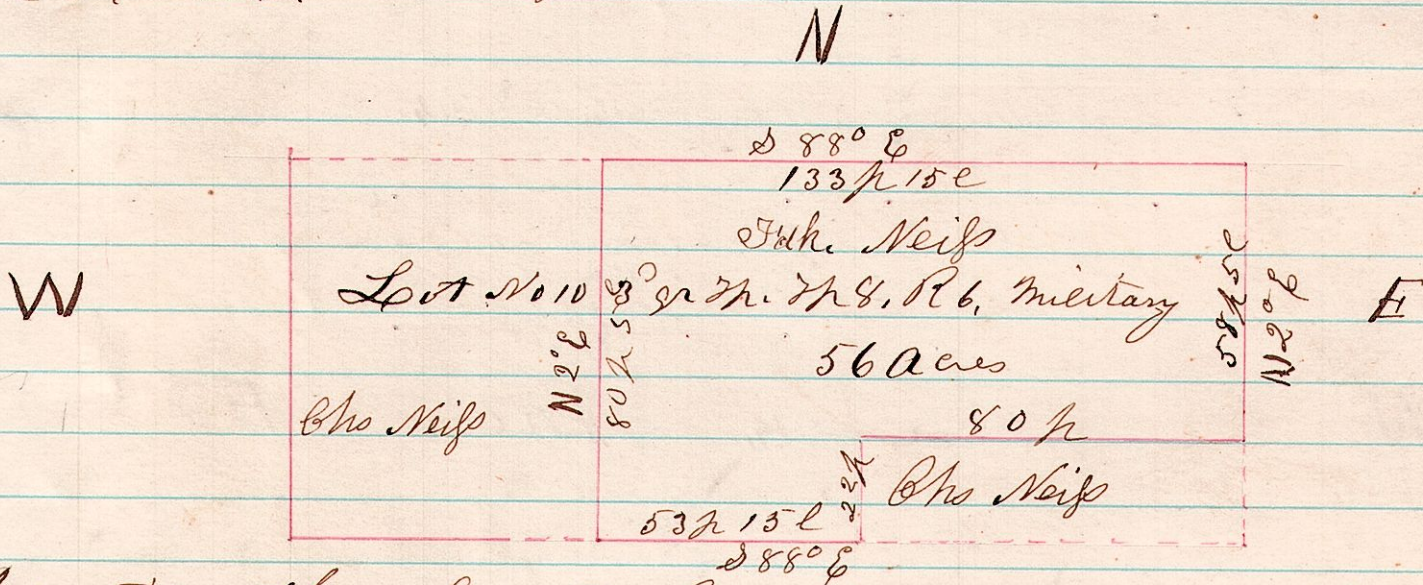
I certify the above to be a correct plat as surveyed  
Oct 19<sup>th</sup> 1874

H. H. Robinson  
Co Surveyor.

No 47

8 <sup>3/4</sup> <sup>lot</sup> 10

A Survey made for Chas. Neif, being the north East part of Military lot No 10, 3<sup>rd</sup> gr T<sup>h</sup>, T<sup>h</sup> 8, R 6.



I certify the above to be correct, as surveyed  
October 30<sup>th</sup> 1874

H. H. Robinson  
Co Surveyor