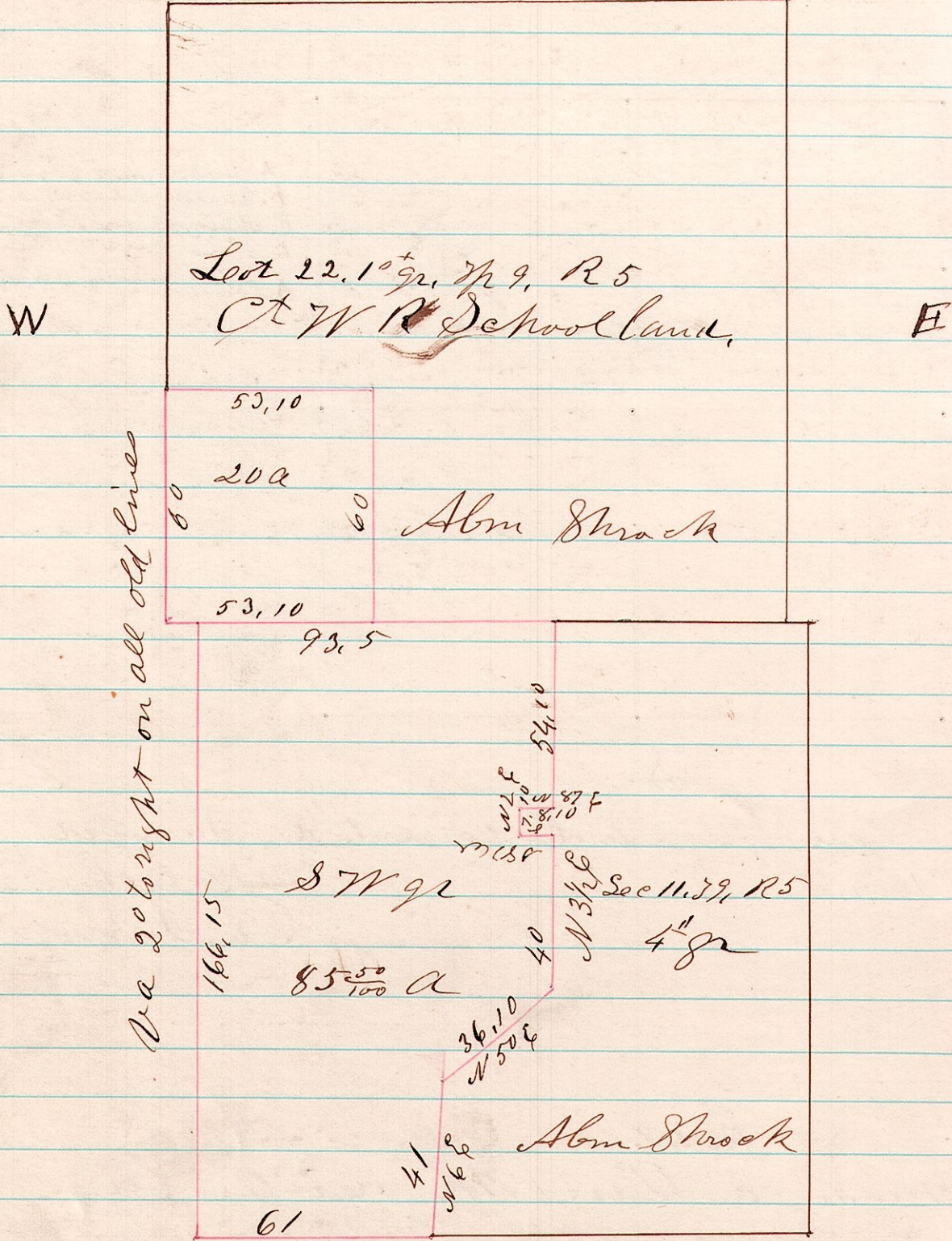


No 43

5911 A. Survey made for Abm Shrock being the west part
of the SW q^r of Sec 11, Tp 9, R 5, 4th gr, also the SW part of
School land lot 22, 1st gr, Tp 9, R 5



Beating the above to be correct as surveyed
Sept 22, 1874

H. B. Robinson
Co Surveyor