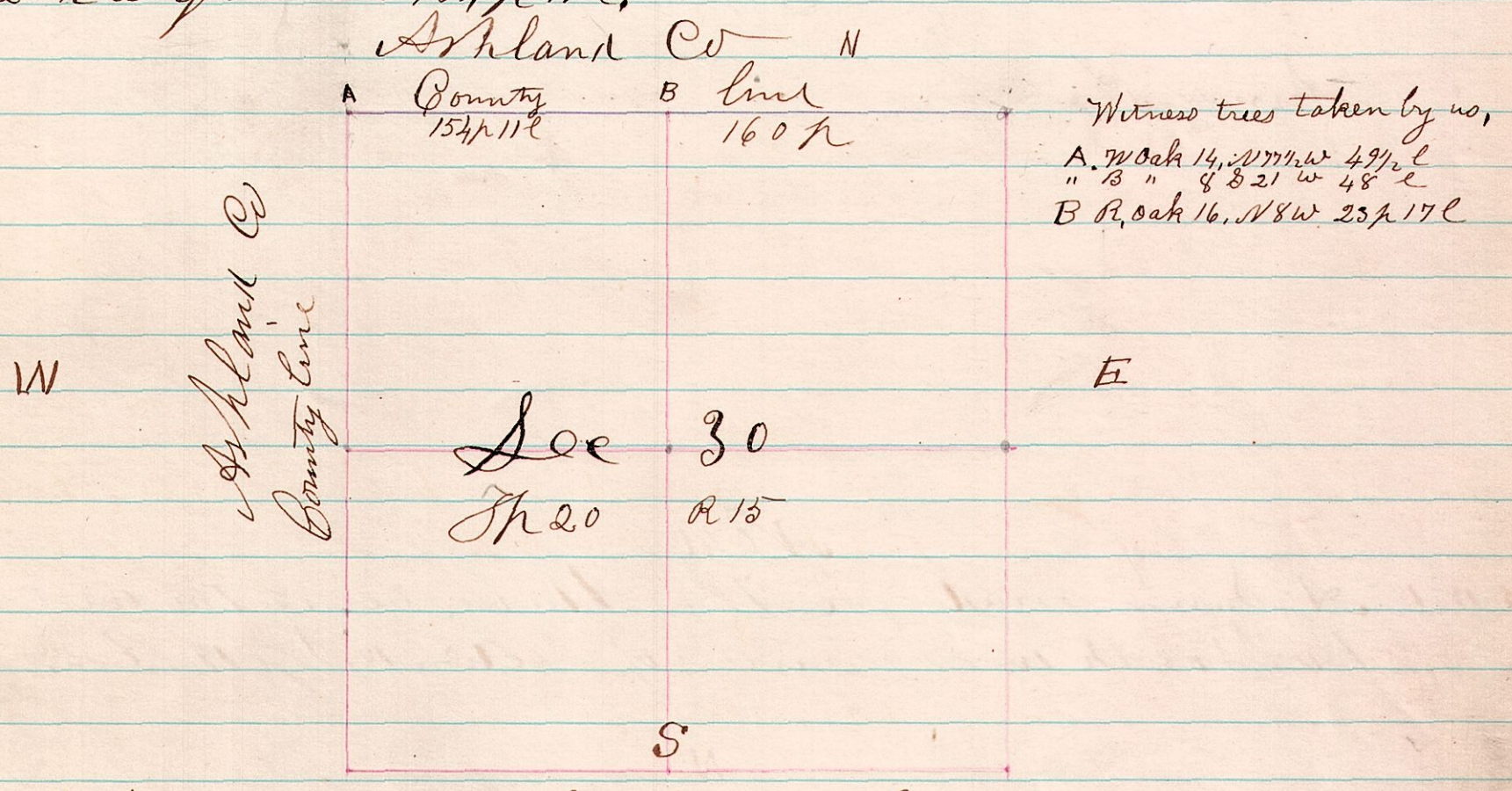


No 38

R J S May 11th 1874. Met with Mr Meddell & Brunckerhoof County Surveyors
 152030 of Ashland and Wayne Counties, for the purpose of Establishing
 the north west corner of Sec 30, Tp 20, R 15. also the quarter
 sec corner of sec 30, on the north. The original bearing trees
 being gone, we established the n w corner of said sec by
 reference to notes of Armeza Coy's survey in 1807.
 He says in his notes he struck the range line between
 Ranges 15 & 16, in running west on the north line of
 Sec 30, 116 links south of the corner of Sec 24 & 25, Tp 20 R 16.
 Said corner being established we therefore ^{established the} n w corner
 of Sec 30 according to those notes. In establishing the quarter
 sec corner we made the n e quarter full (160⁺) leaving to
 the n w quarter 154⁺ 11⁺ l.



A Survey made for Stephen Bird to establish Co line
 & sec corners May 11th 1874

H. H. Robinson
 Co Surveyor