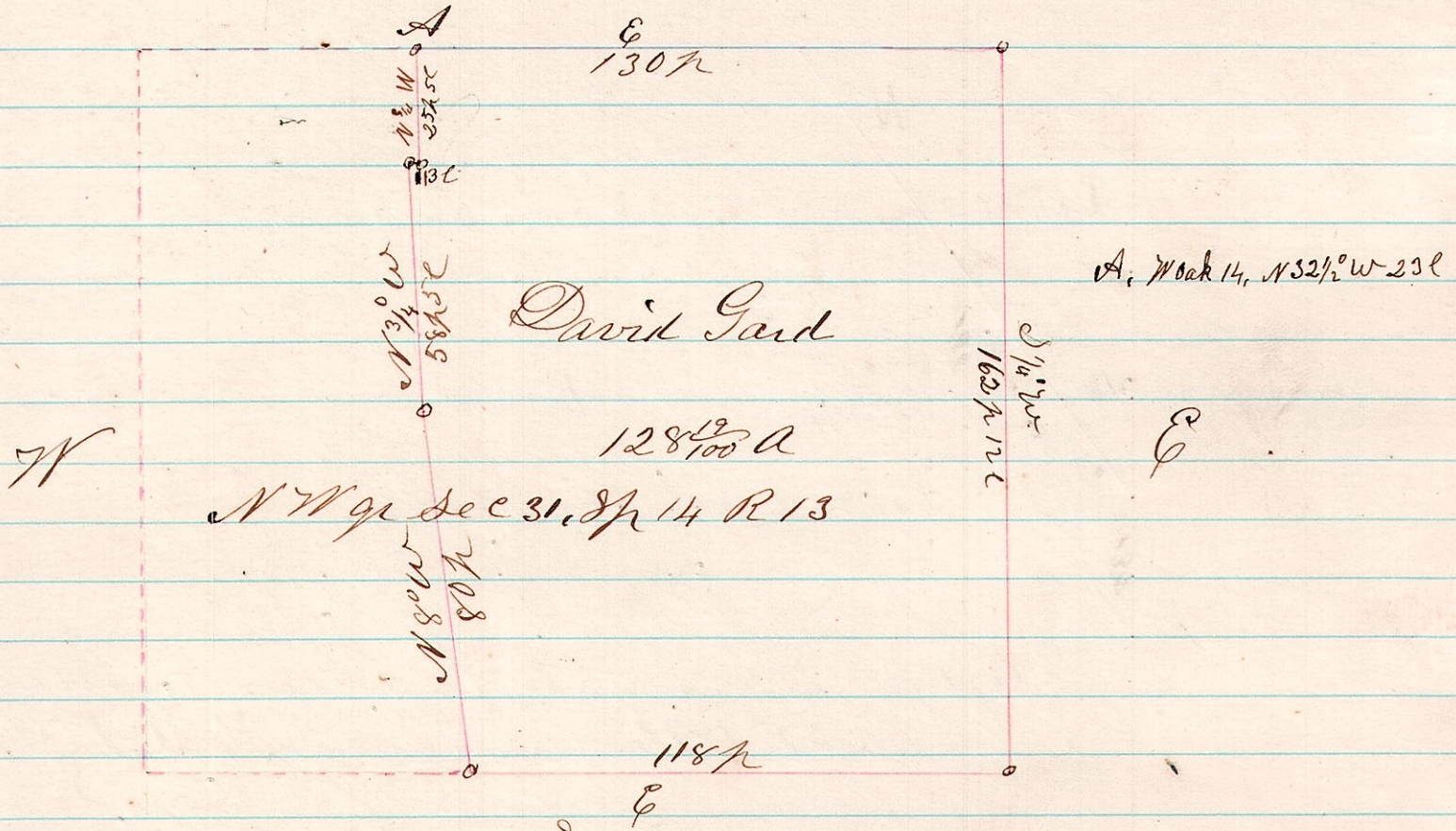


No 23

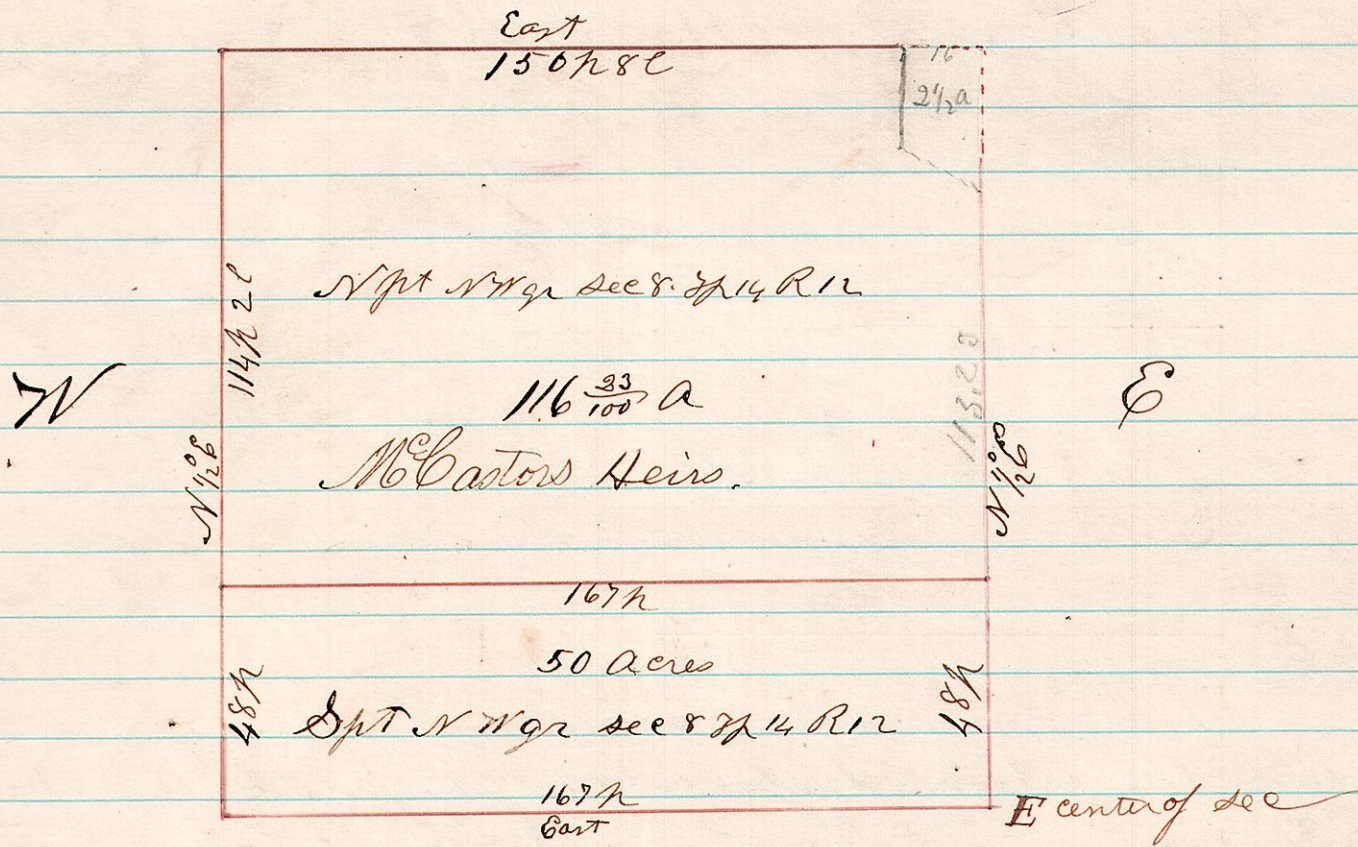
R 5 S 13 14 31 A Survey made for David Gard, being the east part of the NW 1/4 of Sec 31, Tp 14 R 13, North



I Certify the above to be a correct plat as surveyed April 8<sup>th</sup> 1874, H. H. Robinson Co Surveyor

No 24

12.14 8 A Survey made for the heirs of M<sup>c</sup> Daniel Castor being the NW 1/4 of Sec 8, Tp 14 R 12, North



I Certify the above to be a correct plat as surveyed April 13<sup>th</sup> 1874, H. H. Robinson Co Surveyor