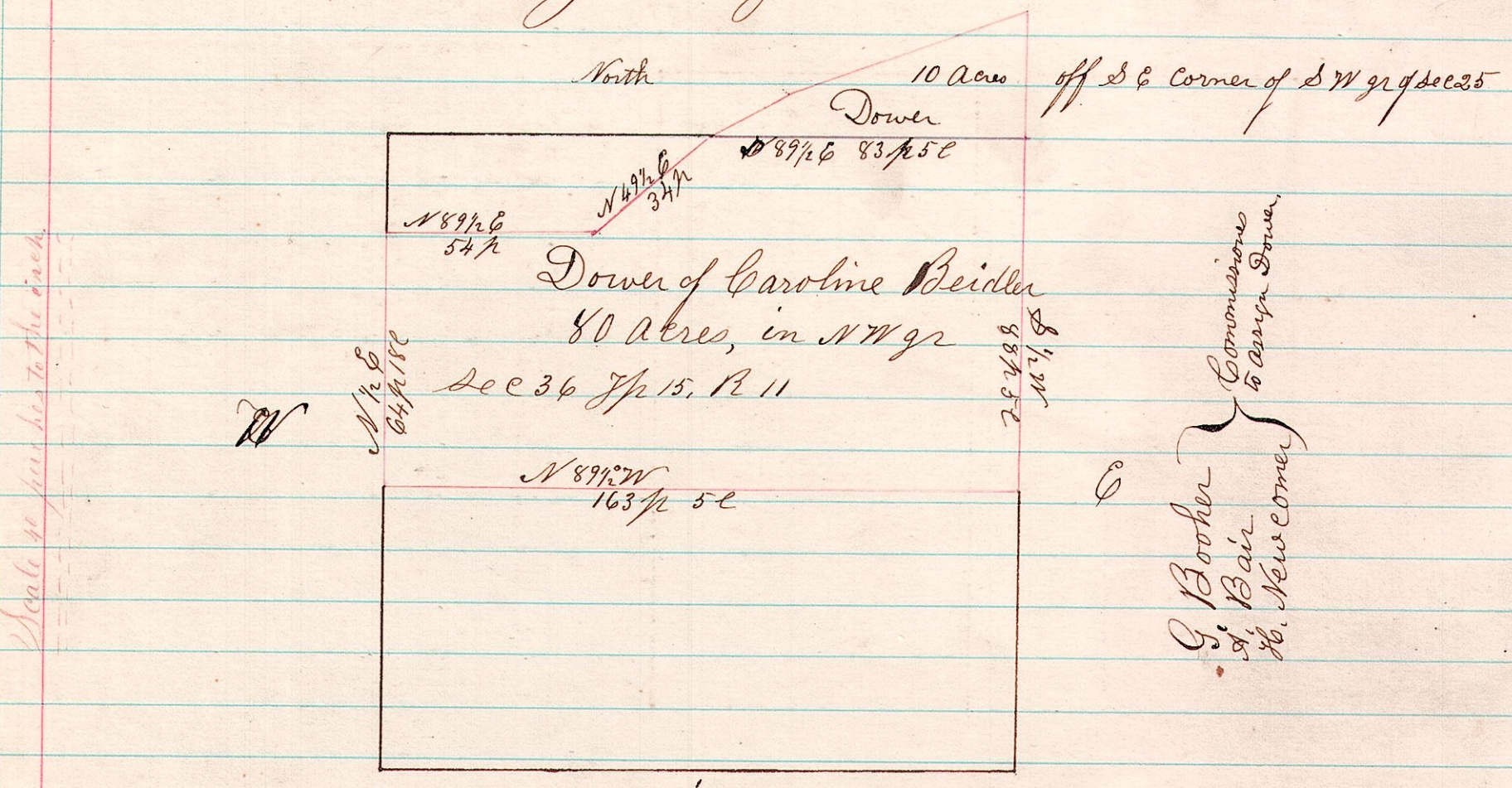


R T S

No 1

11 15 36 & 25

A Survey of dower in case of Walter H Putnam, vs Caroline Beidler, January Term 1874, Sec 25 & 36, Tp 15, R 11.

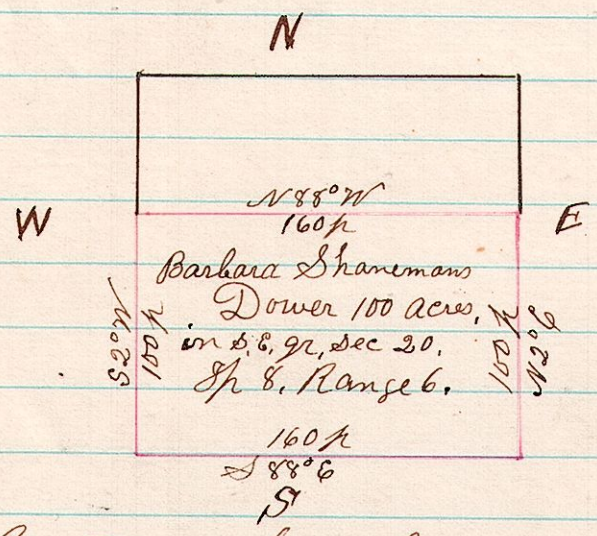


I certify the above to be a correct plat of survey, made, January 15<sup>th</sup> 1874. H. H. Robinson County Surveyor

R T S  
6 8 20

No 2

A Survey of Dower in case of Brown vs Shaneman et al in the South East quarter of Sec 20, Tp 8, Range 6, January Term 1874.



H. H. Robinson  
Jno A Novinger  
S. W. Farmer } Commissioners  
to assign Dower.

I certify the above to be a correct plat survey made January 23<sup>rd</sup> 1874. H. H. Robinson County Surveyor

Scale 80 perches to the inch.