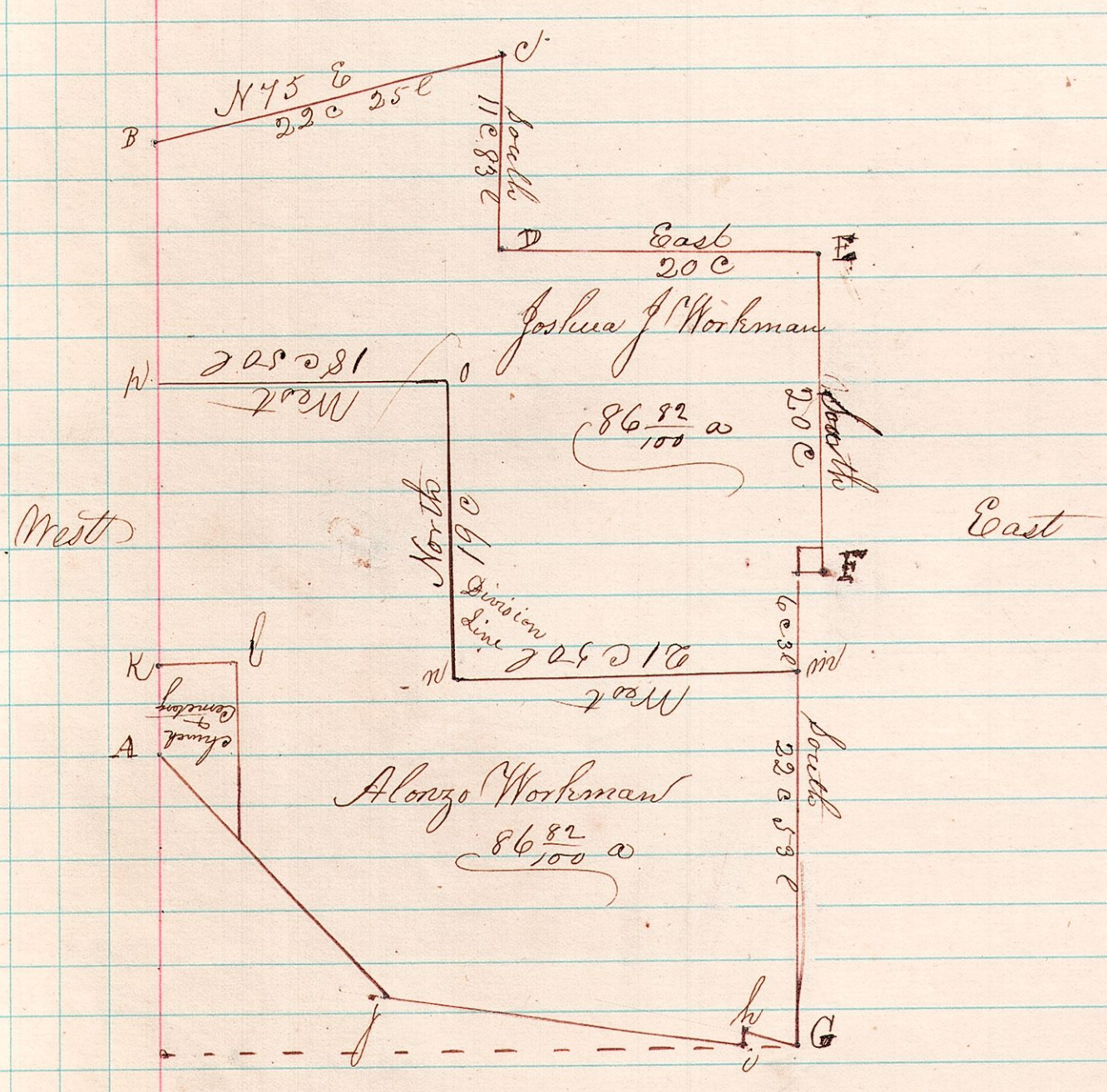


Section 29 Township 20, Range 15

A Survey made for Morgan Workman and others on the day of April 1873 of which the following is a plat and description

Commencing at a Stone 8 chains and 75 links North of the South West corner, thence N 1/2 W of North West quarter of Sec 29 Township 20 Range 15 4 chains 85 links at North West corner of the Cemetery, thence at same course N 1/2 W 33 chains & 46 links, thence N 75° E. 22 chains 25 links to a stake thence South 11 chains & 83 links to @ stake, thence, East 20 chains to a stake, thence South 20 chains for a small Lot 13 1/2 square Rods for water privilege, thence South 29 chains 5 links N 77° W 3 chains & 30 links to @ stake, thence South 25 links to a stake, thence N 84 1/2° W 18 chains to a stake, thence N 60° W 16 chains to the place of beginning containing 173 ⁶⁴/₁₀₀ acres more or less

North



South

I hereby Certify the above to be a correct Plat and description of a Survey for Morgan Workman this 25th day of June 1873

Joshua Spooner County Surveyor