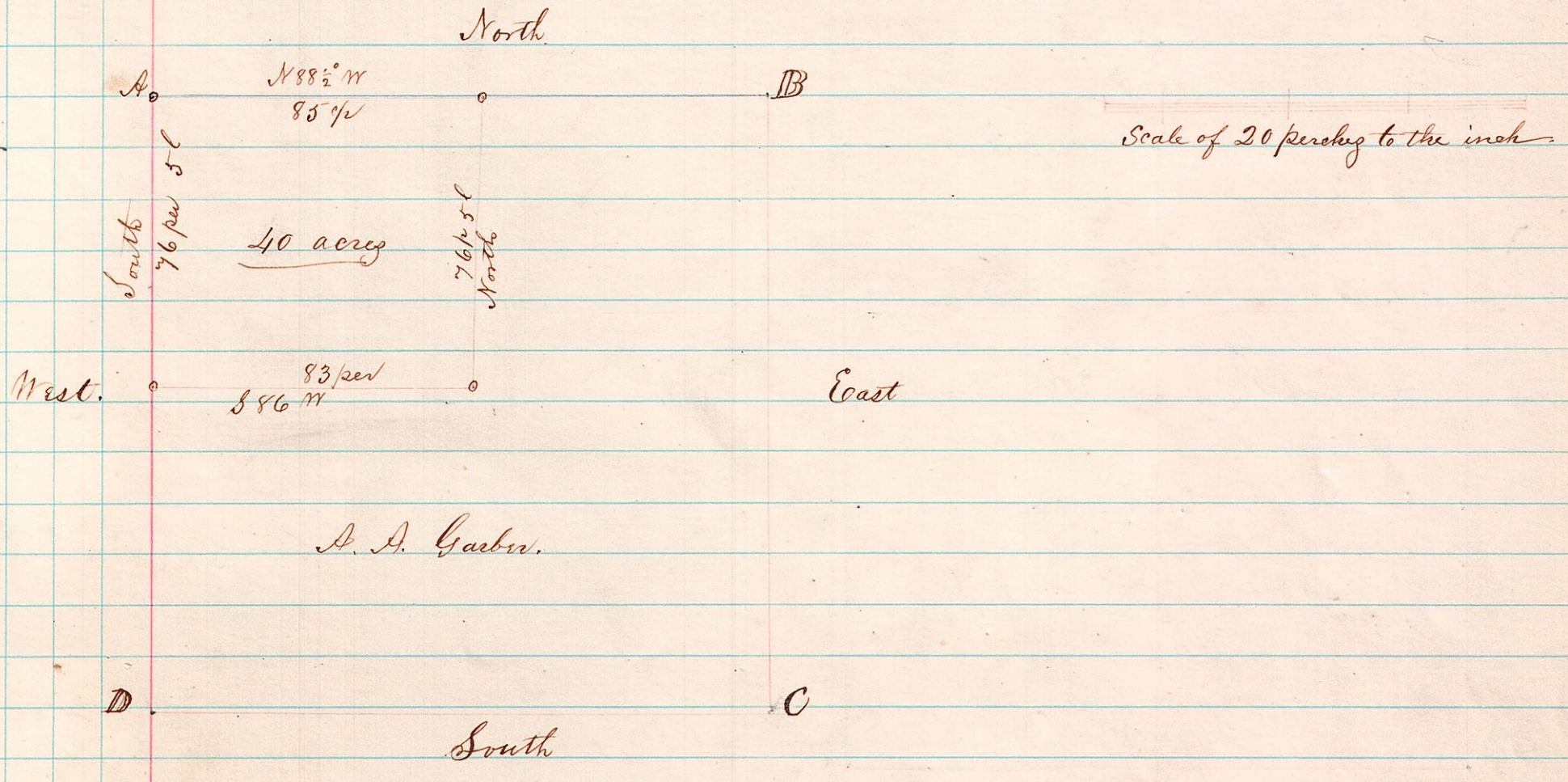


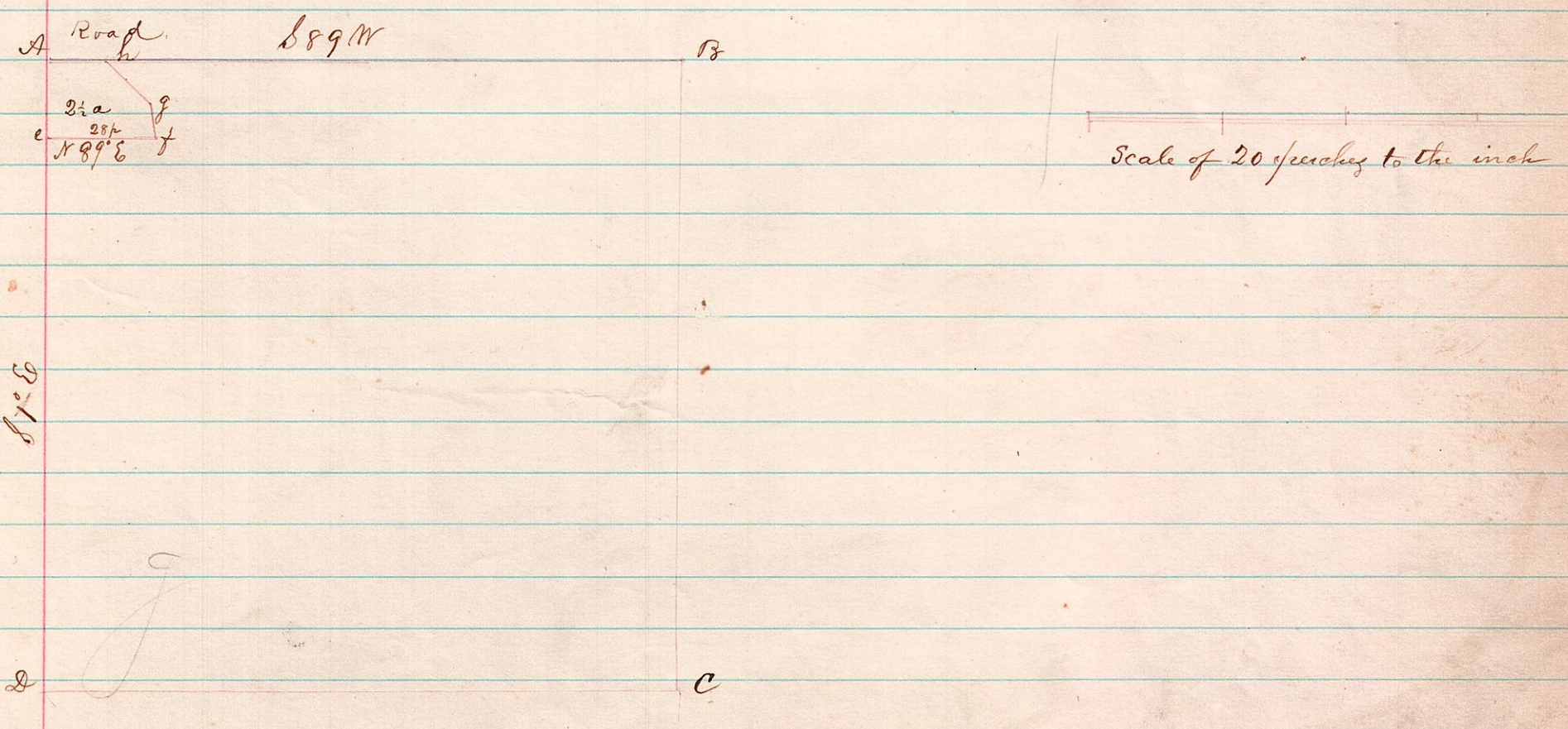
# Section 17 Township 9 Range 4.

A Survey made for Abraham A. Garber commencing at N.W.C. of the S.E. qr of Section 17 Township 9 Range 4, thence due South 76 perches 5 links thence S 86° W 83 perches thence N 88½° W 85 perches to the place of beginning containing 40 acres more or less



The plat and description above for Abraham A. Garber is dividing off 40 acres out of the N.W. corner of the S.E. qr of Sec 17 Tp 9 R 4. May 16<sup>th</sup> 1872. Joshua Sprong County Surveyor

A Survey made for A. J. Taylor & others on 8<sup>th</sup> day of May 1872 the N.W. pt of S.E. quarter 4 Township 13 Range 13. Commencing at the N.W.C. thence S 1° E 19½ perches thence N 89° E 28 perches thence N 9° W 8 perches 12 links, thence N 48° W 16 perches 4 links thence S 89° W 14 perches to the place of beginning containing 2½ acres more or less, of which the following is a correct plat this 22<sup>d</sup> day of May 1872



Joshua Sprong County Surveyor