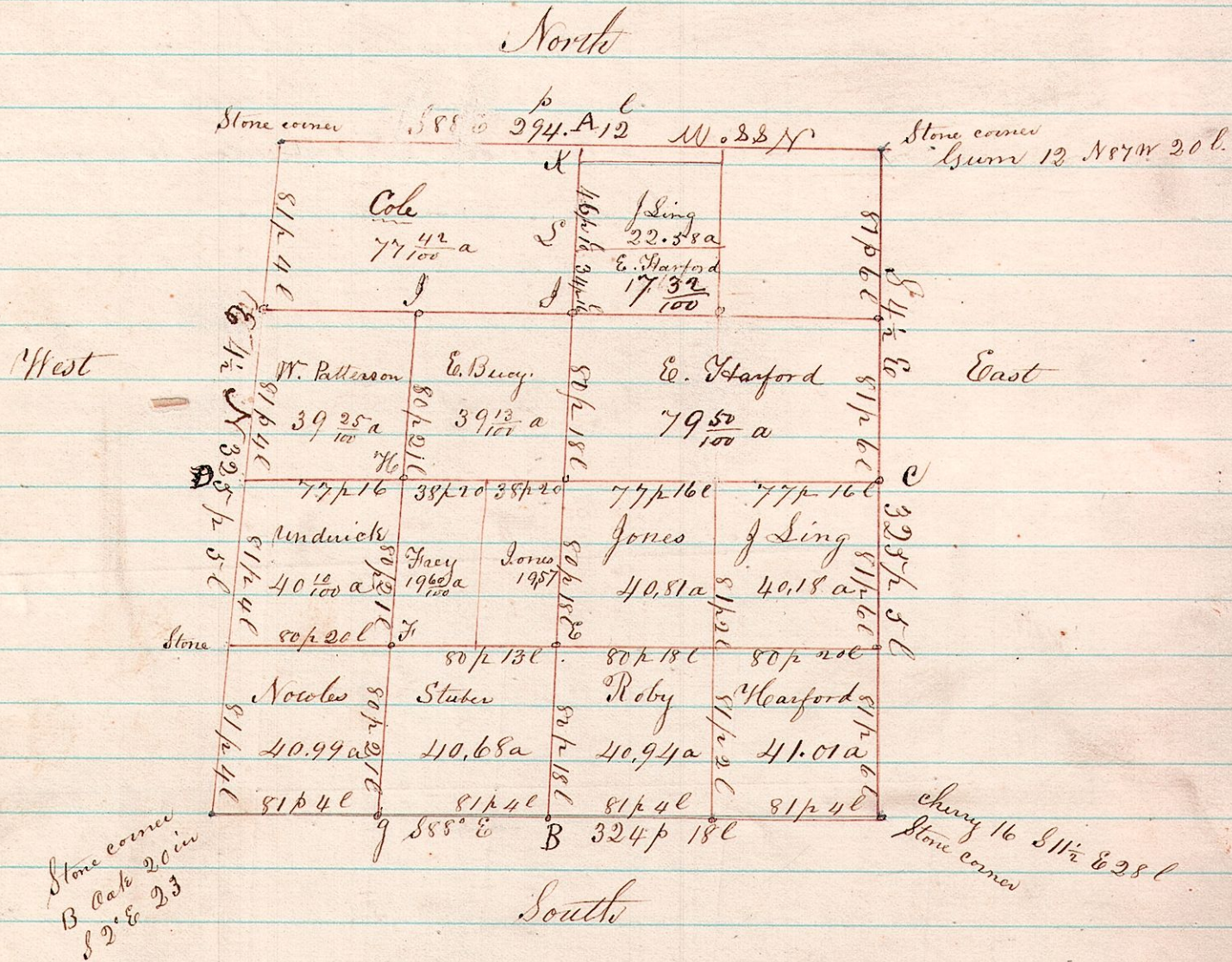


Section 14 Township 8 Range 8 (Richland)



I hereby certify that the above is a correct plat of a Survey of Section 14 Township 8 Range 8 and found the north line of said section too short only measuring 294 perches 12 links, but finding the corners established and the lines pretty well marked I left them where I found them and placing the quarter posts equidistant from the section corners this 29<sup>th</sup> day of April 1872

Joshua S. Spong County Surveyor

Bearing	Tree	Diam in	from corner Course the bear	Links	Remarks.
1/2	N. oak.	14	N 70 E	13	North East corner of 1/2 Nowles
1	B. oak	6	N 76 W	10	
1	B. oak	4	S 41 W	39	
1	Chestnut	3	N 21 1/2	16	
1	B. oak.	8	S 16 E	16	
1	B. oak	10	S 85 W	5	
1/2	W. oak	16	S 13 W	37	
1	Hickory	12	N 27 W	20	
1	B. oak	8	N 75 E	8	
	Gum	3	S 43 W	7	
E	B. oak	24	N 20 W	32	
	B. oak	4	N 18 W	30	
1/2	W. oak	20	N 82 E	41	
1	W. oak	16	S 23 W	46	
1	W. oak	12	N 20 W	17	
1	B. oak	4	S 15 W	13	