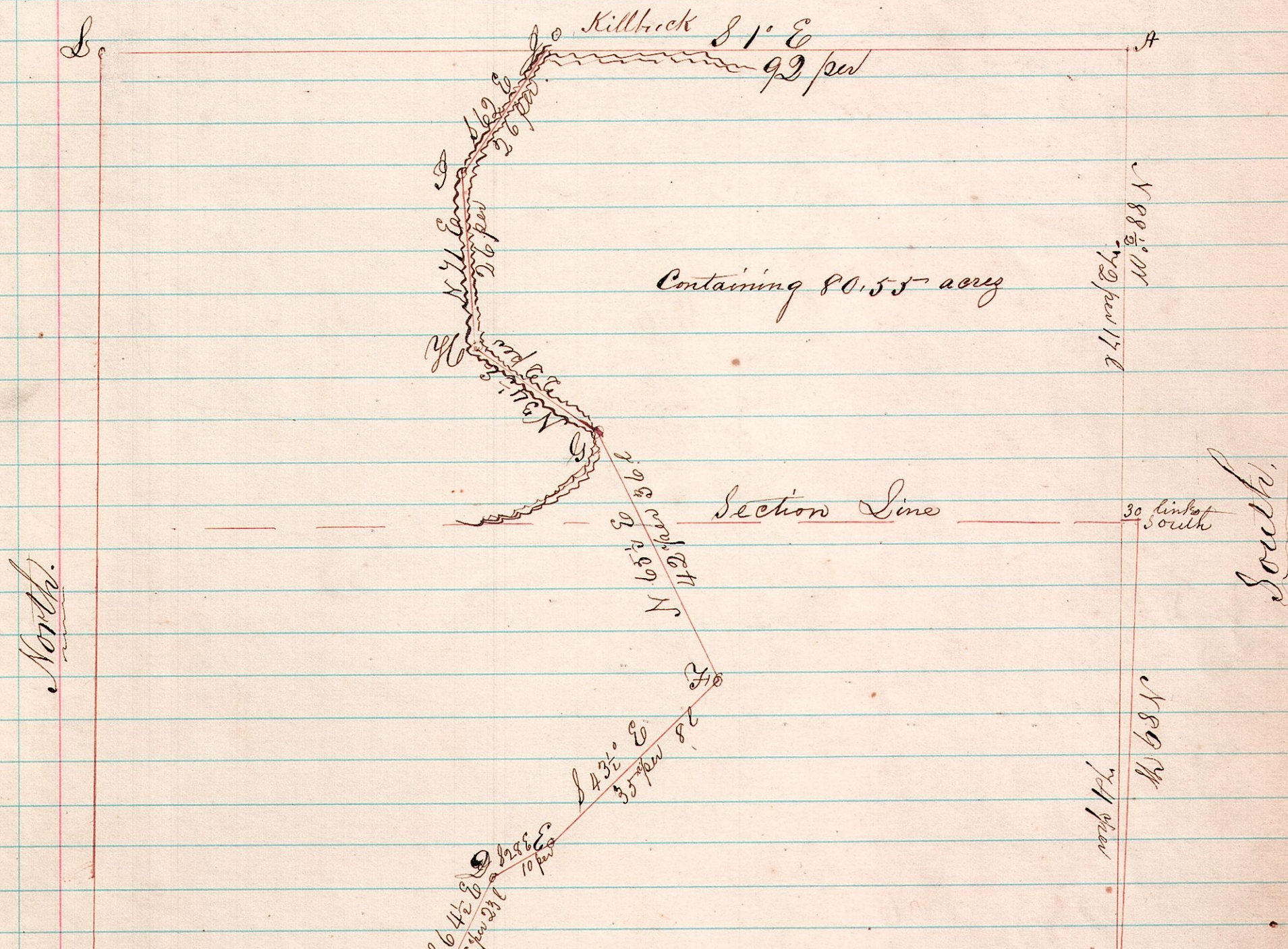


North East qr. Sec. 20 NW. qr. Sec 16, T. 8 R. 7 E. 8. 10

A Survey made for James Butler & others on the 13th day of March 1871

East Joshua Sprongle County Surveyor



containing 80.55 acres

containing 20 acres

Spring of the map 501

West

North 71 N

Corner	Bearing	Tree	Diameter	Course of line	Links	Remarks
A	B. Oak		12	N 30° W	21	
"	Pine		10	West	38	
B	Bearing	Tree	Good			
C	Maple		6	N 6° W	32	
"	R. Oak		8	S 52° W	45	
D	Guide Post			the corner.		
E	Stake					no timber
F	Stake					"
G	Stake			on the bank of Killbuck-creek		
H	Corner			in middle of Killbuck-creek		
I	Corner			do		do
J	Maple		20	N 1° E	100	
"	Sycamore		16	N 7° W	30	
K	a Stone			corner		
M	R. Oak		20	N 20° W	18	
	Hickory		12	N 83° W	20	
N & O	The corner			good		