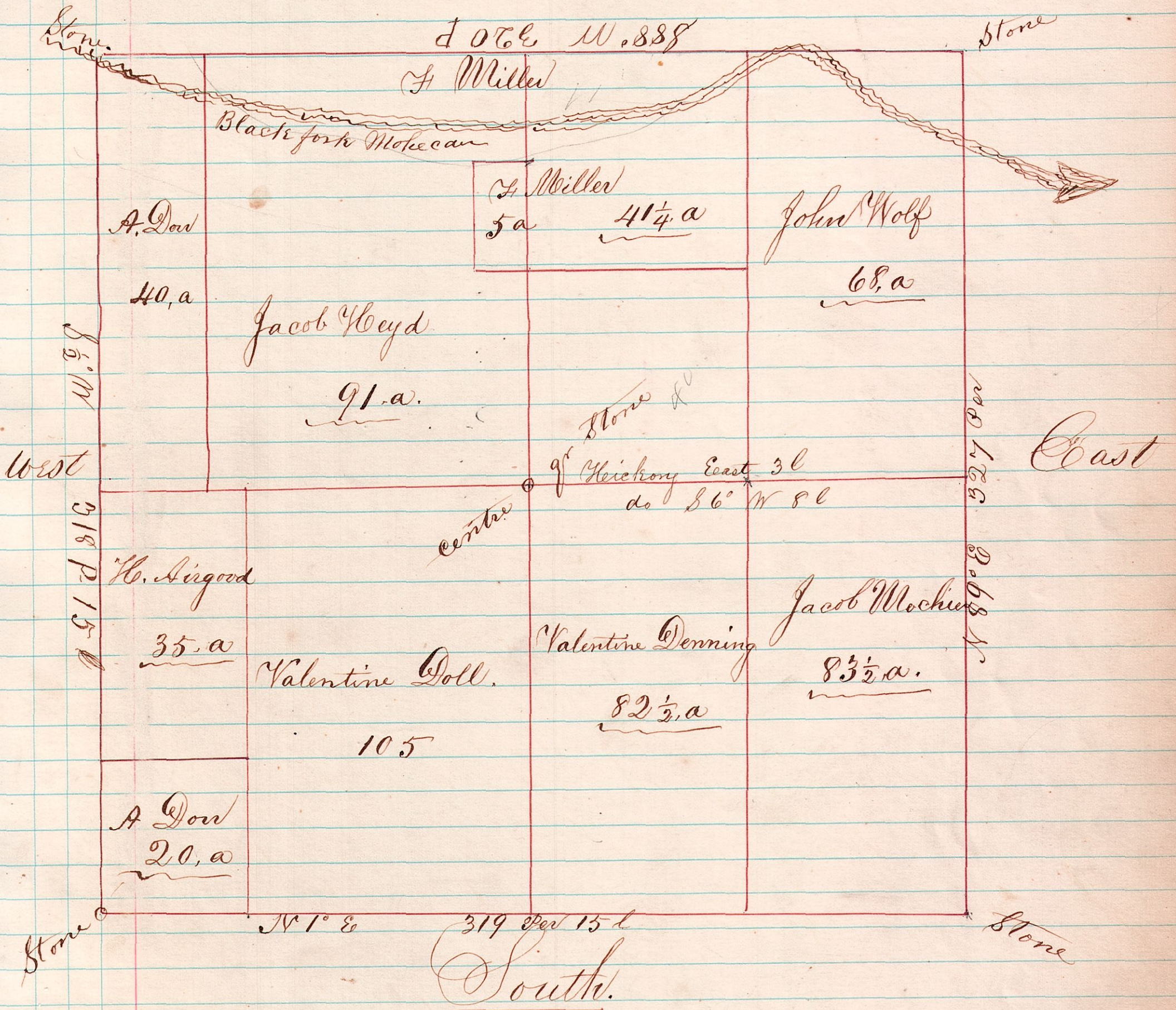


Section 19 Township, 19 Range. 15. 3

North.

Scale: 40 Rods to an Inch.



A survey made for Jacob Heyd and others on 17, 18, 19, & 20 days of January 1871 of which the above is a correct Plat and each corner they set in a Stone where the same was not done and I established the South East section corner by intersecting cross lines.

Corner	Bearing	Yards	Course	Links
centre of Stone	N. oak	N 1 1/2° E	57	links
N.W. cor. Sec.	Sugar	12. S 14° E	23	links
No other timber to mark.				

Joshua Sprongle, County Sur.
H. C. C.