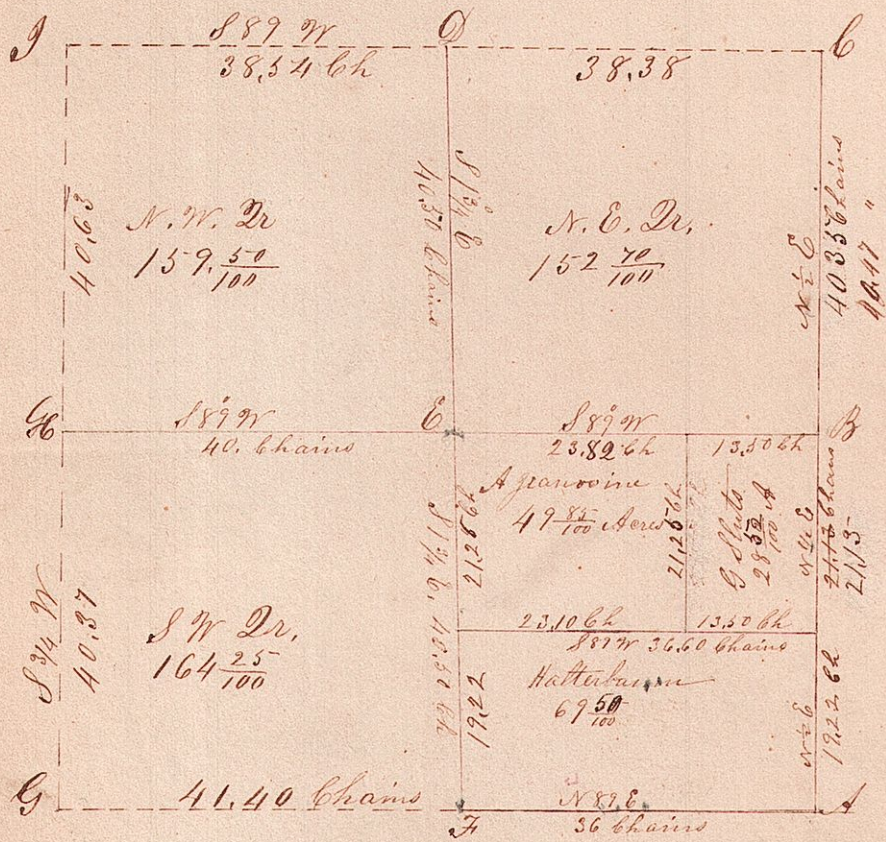


Sect. 34. Tp. 15. Range 12. (Saltouch)



The corners C & B were lost. At B the corner was established by running from A to C and dividing the line in the middle. The corner at C was established by running from B to G & from I to F where the lines crossed I established the corner, at F the corner stands about ten perches east of the centre of the South line of said Section which makes the S.E. Dr. considerably the smallest the whole Dr. only containing about 148¹/₂ Acres.

The above is a correct plat & notes of survey of said Dr. Section, Surveyed Nov. the 26th & 27th A.D. 1863
 Jas. L. Richeson Co Surveyor
 Holmes County Ohio

Re. Surveyed Apr 29th A.D. 1864,
 Jas. L. Richeson,