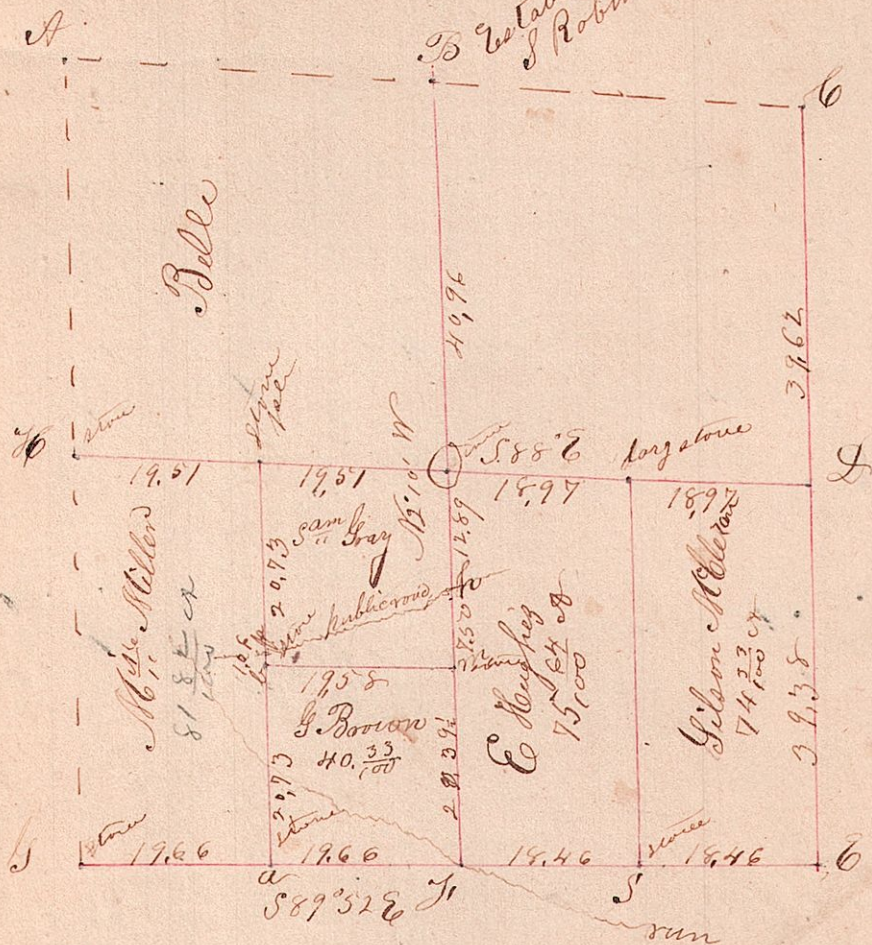


Established by
S Robinson



- Witraz trees
 G of oak 14 N 46 1/2° W 40 1/2' & Noak 5 N 76° W 61 1/2'
 W- Noak 24 N 59° W 64
 J- Noak 12 N 5 1/2° E 71 - Noak 20 N 33° E 73 & Noak 14 S 40° E 53
 O- Noak 6 N 50 1/2° E 18 1/2' & Noak 9 N 90° E 32 1/2' & Noak 224 N 80° E 26 1/2'
 B- Beech 8 S 44° W 34' & Beech 12 N 36° W 60
 C- Noak 15 S 13 1/2° W 34' & Noak 17 S 30° W 50' & Noak 7 N 37 1/2° E 82' & Noak 5 S 34 1/2° E 66'
 > no Noak 12 N 59 1/2° E 33' & Cherry 5 N 77 1/2° E 49'
 > h- Cherry 10 N 76 1/2° W 42' & oak 12 N 46° W 6' & oak 14 N 41 1/2° E 34 1/2'
 S Noak 14 N 82 1/2° W 43' & Noak 18 S 75 1/2° W 36' & Noak 5 N 89° E 36' =

There had existed some difficulty in regard to the pt. mark at J. One of the original trees was standing but alas the original rock had been chopped out by Jackson Silcott in the year 1850. Grothez corresponded to time the corner is in the run which caused the bearing to be taken from the tree to the corner & this caused a mistake to be made in registering it down - At C there were two oak stumps corresponding with the original notes, but they had been cut so low that the stumps could not be identified. So I called