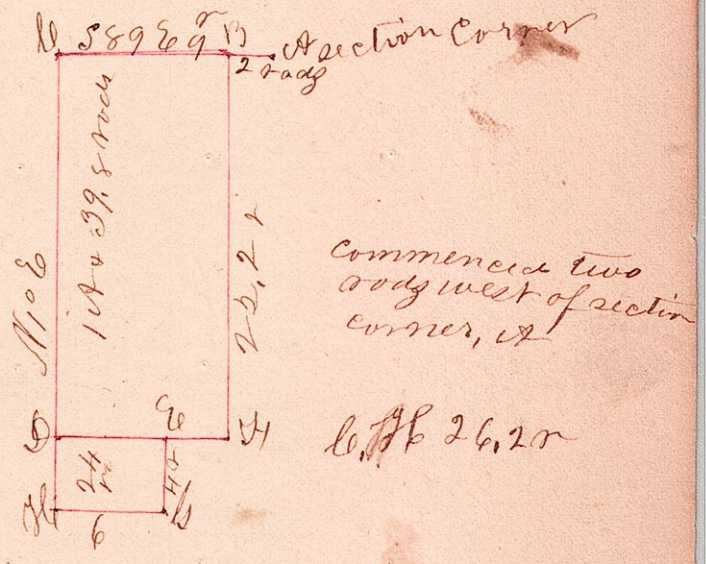


Sp. 8 Range 7 Sec 14 N. 6. E. (Hillbush)

Nb1.



Surveyed the above Jan. 27th AD 1860, for
 Henry Shepler, the large parcel being for
 a burying ground and the smaller for a
 church yard. Chain carriers Samuel
 Shepler & Henry Highshew Sworn
 Joseph Edgar County
 Surveyor for Holmes Co
 Ohio.