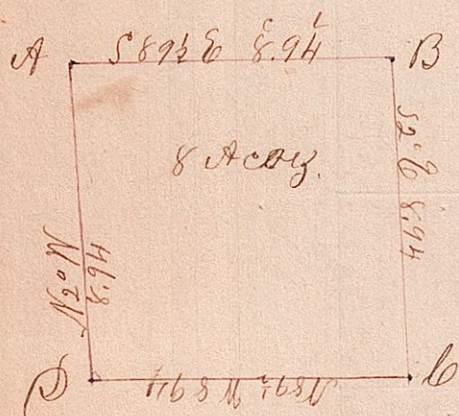


Sec. 13Range 13Sec. 15, N.W.C. (Prairie)

No. 25)



A-stone planted by Robinson (see corner)
 B-Chestnut 5 N 70 1/2 W 35 1/2 & Asher 5 S 10 1/2 W 20.
 C-Willow S 49 1/2 W 49 & Hickory N 51 1/2 W 10
 D-stone planted in road

I hereby certify the above to be a correct plat
 and notes of the survey of eight acres of land
 sold to George Heights for taxes, surveyed in the
 North west corner of the above named section by
 order of the county auditor, Mar 24th 1861.

Joseph Edgar County
 Surveyor for Holmes co.