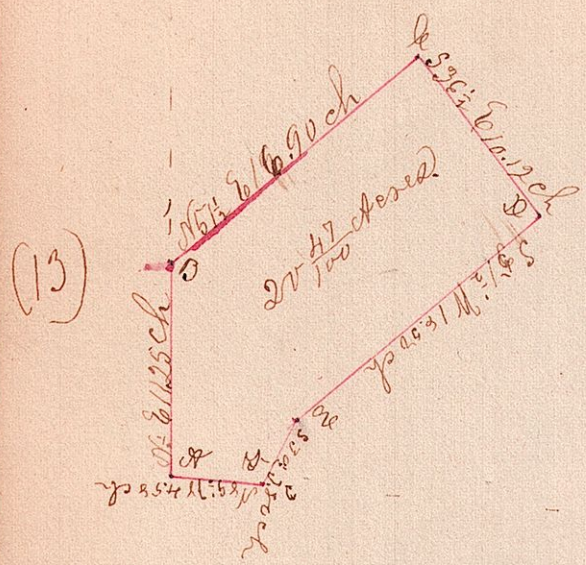


188.

1/2 Sec 8 R. 5 sec. 6 N. W. 35 in the South W. Corner



A Stone, The N.W. corner of the above named
 qt. 13 stone. Witness tree. Wood 15. 800 to 47 L - Hickory
 8. 800 to 47 L. A stone at side of road. - 1 stone planted in
 at the fork of road - a notch cut on flat rock in the
 road. just at the top of ground. 1 stone planted on road

The above were surveyed for Isaac S. Miller
 on May 5. 1860. being a parcel of land cut
 of the south west corner of the above described
 qt. of which the above is a correct plat and notes
 of the survey. Sold to Jacob S. Miller
 Jacob S. Miller & Emanuel Toyer chain carriers
 Joseph Edgar County Surveyor
 for Holmes Co Ohio.