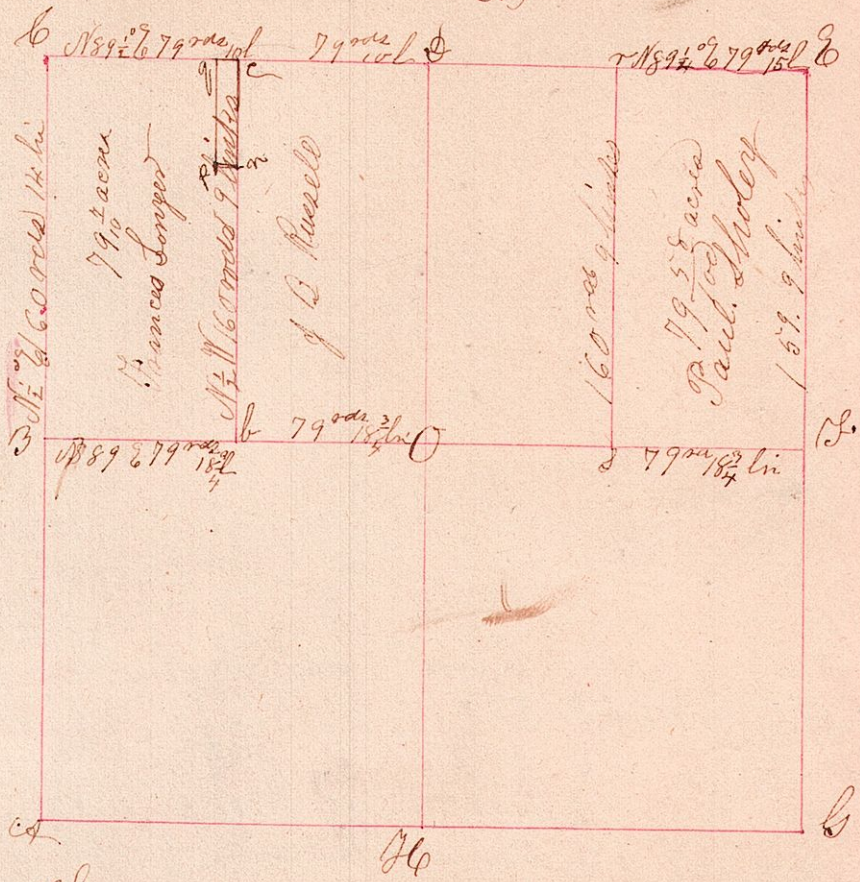


T.P. 15. R. 12 of Sec. 25 W. 1/2 of N. W. 2 & E. 1/2 of N. 20



The North West part of the above was surveyed for Francis Longey on the 11<sup>th</sup> day of Apr. 1860. & the N<sup>o</sup> part for Paul Sholey on the 12<sup>th</sup> day of the same month & year. being 80<sup>s</sup> Longey's the west 1/2 of the N. W. Quarter of sec 25. T.P. 15 Range 12 and Sholey's the East 1/2 of the N<sup>o</sup> 20 of the same sec. T.P. & Range.

Found all of the original corners. Found that the original corner at D is not on a straight line between C & E.

Stones planted at all of the original corners

- C stone
- 6 stone } Wash S 37 1/2° W 56
- 4 stone planted
- Stone } Chest 34.557° E. 21
- Stone } Thirt 18.527 1/2° W 24
- Stone planted } Chestnut 43. N 74° W 51
- Stone } Pine 58° W 63

(9) surveyed for Longey on the same plat containing 2 acres as a donation to Catholic Church commencing at the North East corner of the west 1/2 of the N. W. 1/4 of the above described sec.

- C S 1/2 E 45 rods 8 1/2 in to a stone
- 92.589 1/2° W 7 1 1/2 link " " " " side over
- N 1/2 W 45 rods 8 1/2 in to a stone
- T N 89 1/2° E 7 rods 1 1/2 in to a stone

Double witness at 9. make S N 49° E 18 1/2

I certify that the above is a correct plat and notes of survey of Joseph Edgar county surveyor for Edmund Co. Okla.