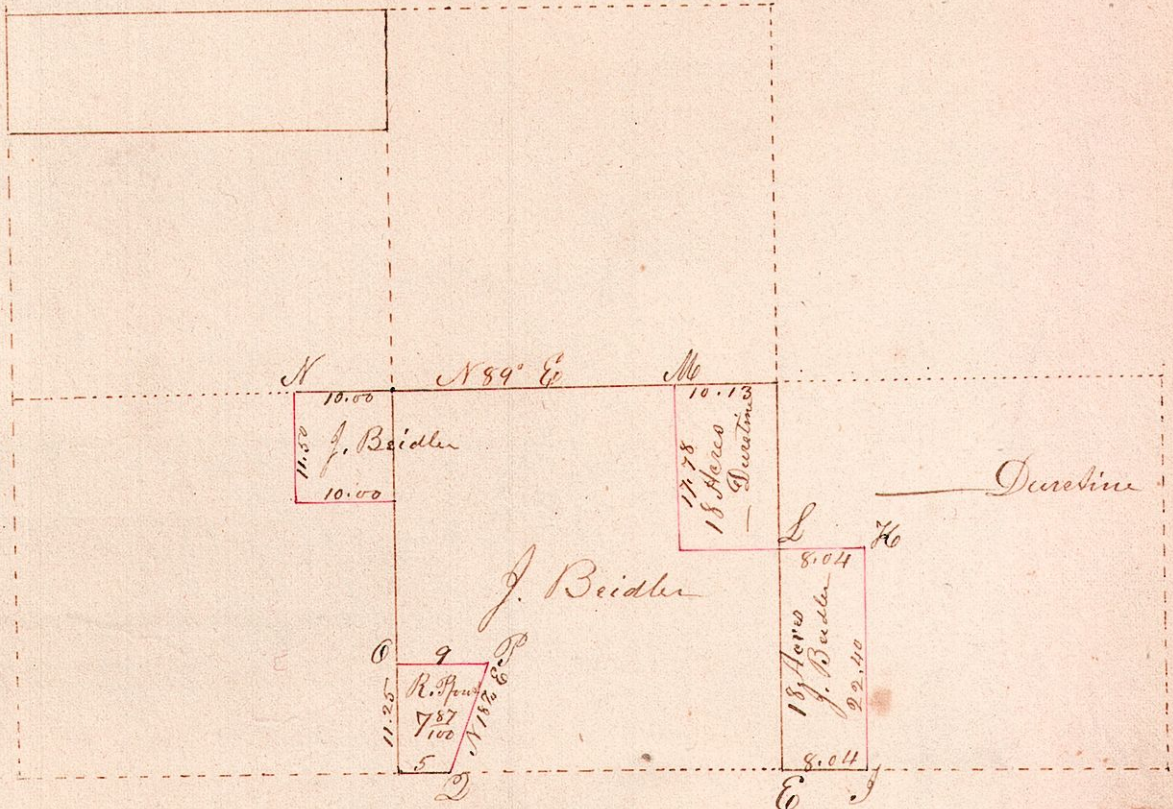


Section 35.8 S. 11.2. Q. 36 Sp 15 Range. 11.



Bearing Trees

Station	Timber	10	Course	Distance in links
E	W. Oak	20	N 58° E	40 links
J	W. Oak	36	S 70° W	26 "
H	Popwood	4	S 86° E	10 "
	Sugar	8	S 69° W	15 "
L	W. Oak	8	S 52° W	30 "
	Ironwood	8	N 49° W	22 "
M	Sugar	16	N 67° W	19 "
	Ironwood	2	N 80° E	4 "
N	Maple	14	N 26° E	16 "
O	W. Oak	18	S 28° W	96 "
P	Balm	22	S 18° W	34 "
Q	W. Oak	15	N 70° E	114 "

Surveyed the above for Jacob Bridler and Others
Oct 29th 1851

J. Silcott (C. S. H. Co.)