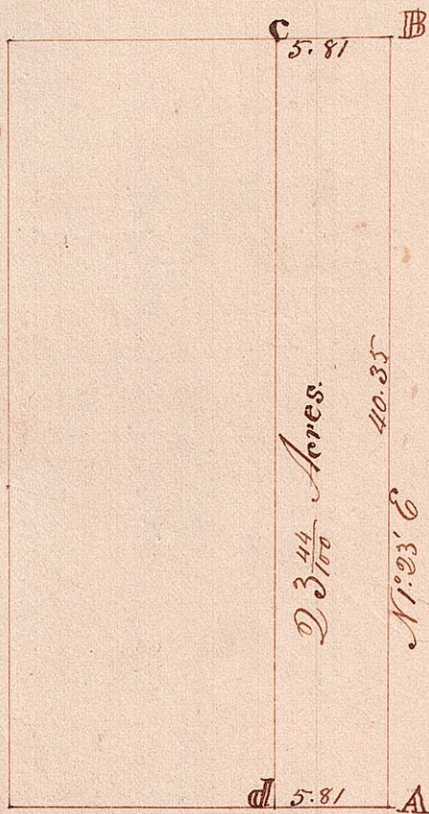


Township 8 Range 7 Section 9



Surveyed the above $23 \frac{44}{100}$ Acres off of the
 East side of the S. E. $\frac{1}{4}$ of Section 9 Tp 8
 R 7 - Surveyed for the Widow Grey, by
 order of Commissioners appointed by Sheriff
 of Hedines County -
 Being the E. $\frac{1}{2}$ of the S. E. $\frac{1}{4}$ of the aforesaid
 Oct. 2^d A 1850

Dakron Silcott C^o. Surveyor

" " "