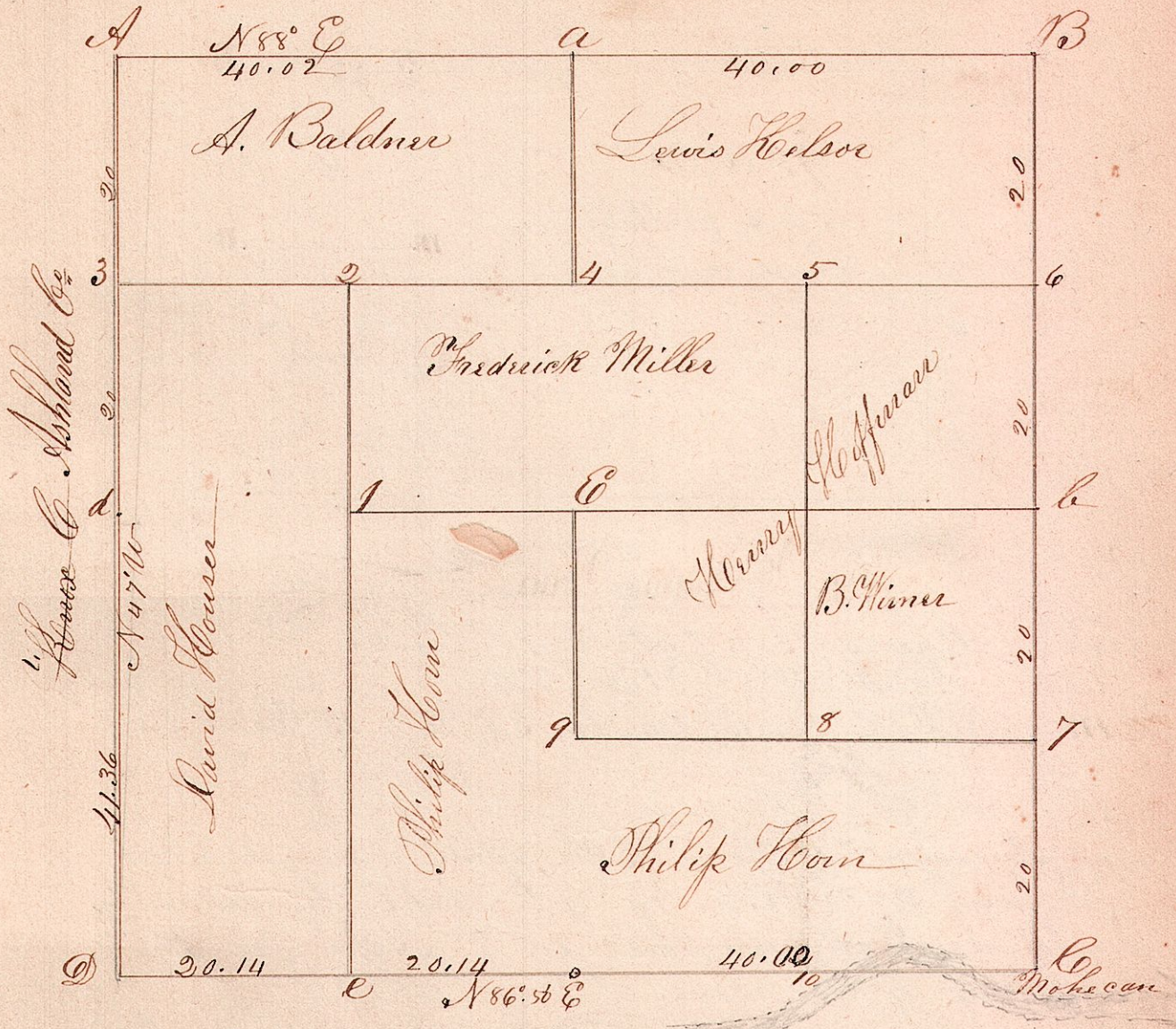


Section 18 Twp 19. Range 15.



Surveyed the above section for the above named persons May 1850.
 The Original corners of the above section are nearly lost. At the S. E corner marked (C) I found Timber that agreed with the Original Notes - though I could not find any marks on them - I placed the corner by them, as it agreed with the corresponding lines.
 The corners at A & C on the County line were made by the Surveyor of Ashland County - no doubt but they are correct.

James Silcott, (Co. 8.)