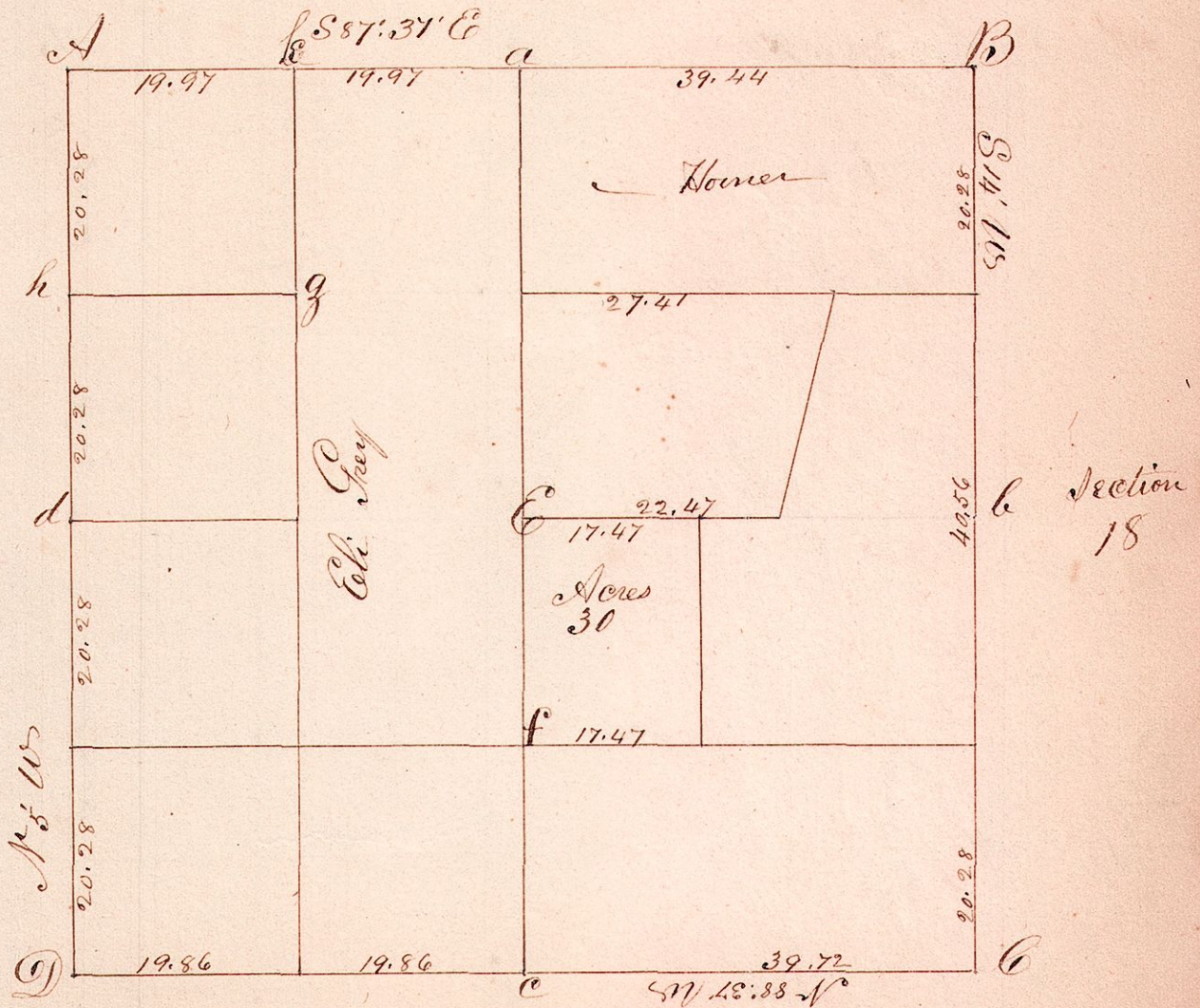


Township 9 Range 9 Sec 17 (Homer)



"Bearings Thru to the corners of 17

- d. W. Oak 50 S 52° E 33 links
 h. W. Oak 15 N 80 W 32
 A. Stone planted by Surveyor Robison Original Timber gone
 k. W. Oak 18 S 64 E 28 S. W. Oak 16 N 36 E 23
 a. W. Oak 20 S 55 W 40 links
 B. B. Oak 30 corner (Footed)
 f. W. Oak 18 S 58 E 31 links
 g. B. Oak — S 22 E 18

"Remarks

At the remaining corners no bearings were taken, except the corners on the East & south sides, which will be found recorded with sections 18 & 14
 At E the center no timber, such is the situation of the corner that have no bearings taken

Surveyed May 1848

J. Gilcott (Clerk Sur)