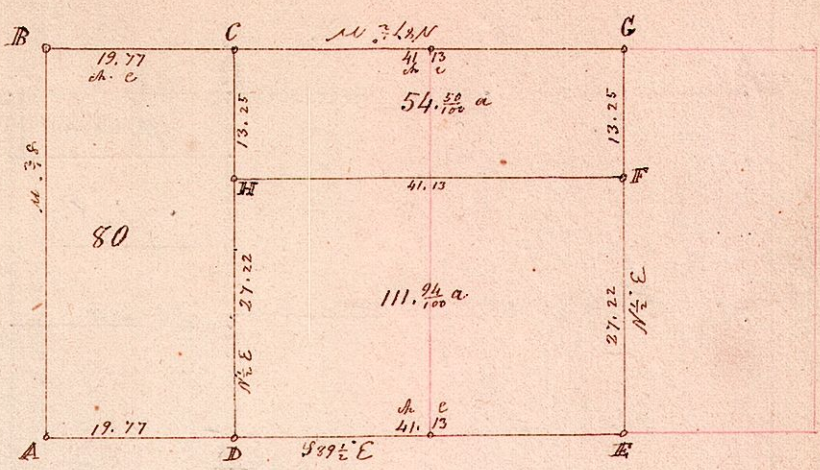


1840  
1826  
18415

S. W. quarter, and the W<sup>1</sup>/<sub>2</sub> of the S. E. qr of Sec. 14 in T 8. of R 7.

No  
of survey  
16



Station	Bearing	Dist	Diagonals	Angles	Remarks
A	B. oak	18	S 77 E	7	
	W. oak	20	N 30 E	35	
B	Post in field				the corner
C	Post in field				the corner
D	Post				the corner
E	Stone 9				the corner
F	Post				the corner
G	Stone 8				the corner
H	Post				the corner

Scale 20 chains to the inch

In Partition

Surveyed the above April 21<sup>st</sup> AD 1840

Being the South West quarter, and the West half of the South East quarter of Section number 14, in T 8. of R 7.

The West part of the S. W. quarter, containing 80 acres was set of for the Dover Estate of Sarah Husted, (Widow of Bartholomew Husted Dead) The North part of the East part of the S. W. quarter, and the North part of the West half of the S. E. quarter, containing 54.50/100 acres was set of for Roswell Chapman, one of the heirs at law of said Bartholomew Husted deceased, of which the above is a correct plat of the same,

Samuel Robinson C<sup>o</sup> Surveyor