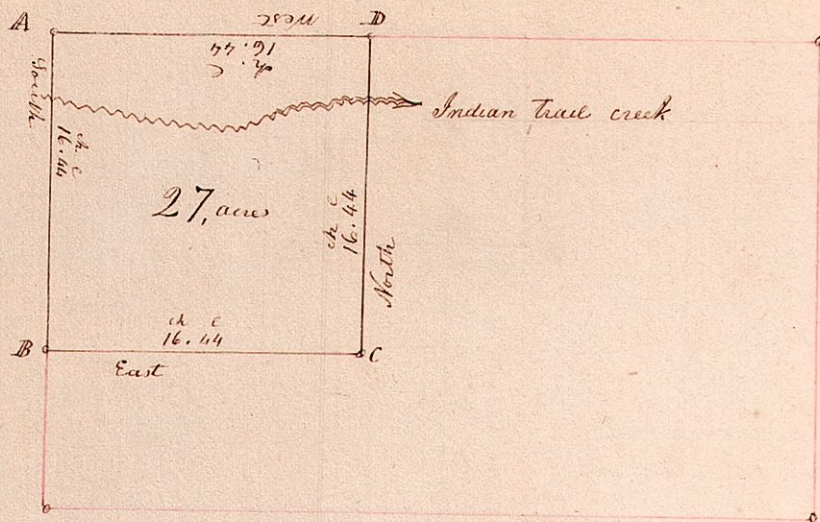


8

N. W. part of Lot 15. in T 10. of R 4, Section 3,

N.E.  
8

Scale 10 chains to the inch

Station	Boundary	Traces	Diurnal	Remarks they bear	links
A	Stone Oak	10	the corner	N 23 E	30
B	Post		the corner		
C	Stone	13	the corner		
D	Post		the corner		

Surveyed the above, March 20<sup>th</sup> AD 1833.

Being the North West part of Lot number 15, in T 10, of R 4, Section 3, of which 25 acres was sold to Samuel Shane on the 12<sup>th</sup> day of December AD 1826 at the Auditor's sale, in the County of Holmes Ohio, for the taxes &c due thereon for the years AD 1824 & 25. Also 2 acres of the same lot sold to Christian Smith on the 27<sup>th</sup> day of December AD 1830, for the taxes &c due thereon for the years AD 1829 & 30. And the two purchases included in the above survey, of which the above is a correct plat of the same

Samuel Robinson Co Surveyor