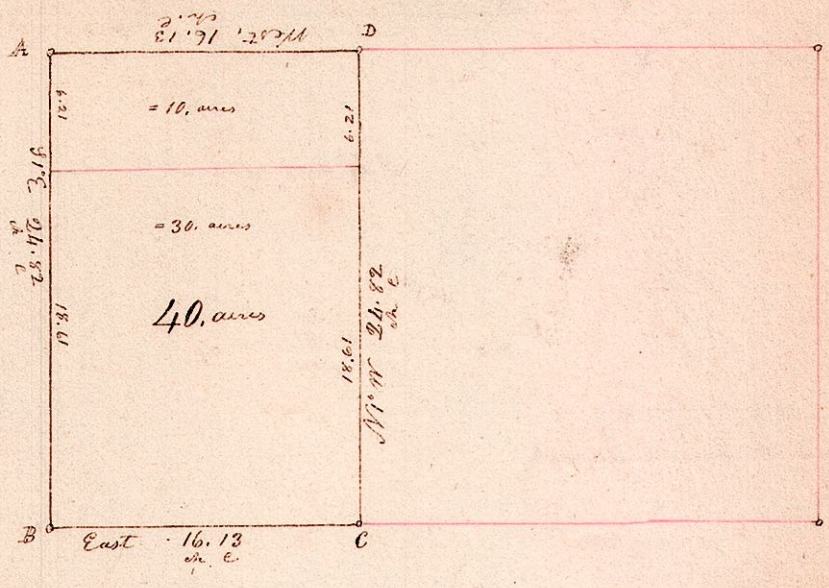


W. part of Lot 9. T9. R7. Sec 2.

No.  
5

Scale 10 chains to the inch



Station	Bearing	Feet	Chains	Bearing	Feet	Chains
A	Dogwood	8	966	N	9	
	W. oak	12	868	E	13	
B	Dogwood	5	N 24	E	29	
C	Ash	6	N 82	E	11	
	Do	4	N 10	W	5	
D	Post the corner					

Surveyed the above February 22<sup>d</sup> AD 1830.  
 Being the West part of Lot number 9 in T9. of R7. section 2. of  
 which 10 acres, was sold to George Hites on the 11<sup>th</sup> day of December  
 AD 1826. and 30 acres on the 1<sup>st</sup> day of January AD 1828. at the  
 Auditors sale in the County of Holmes Ohio, for the taxes &c. due  
 thereon for the years AD 1825, 1826 & 27. of which the above is  
 a correct plat of the same. Samuel Robinson Esq. surveyor