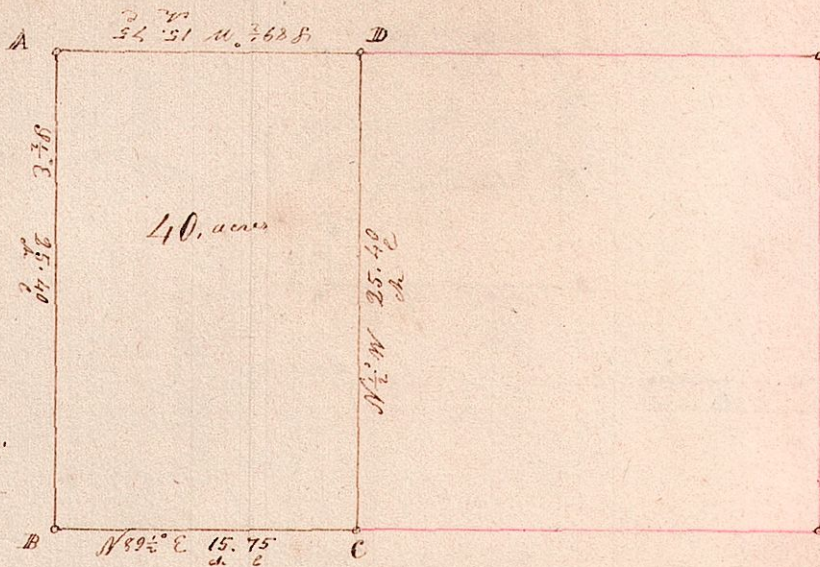


W. part of Lot 29 in T 8. of R 6. Section 3.

No.
of
Survey
4.



Station	Bearing	Feet	Course	Chains	Links
A	W. oak	16	S 50 E	-	8
B	Maple	16	N 58 E		16
	W. oak	36	S 63 W		30
C	Post in falling timber				
D	Elm	8	South		1

Surveyed the above January 2^d AD 1830
 Being the West part of Lot number 29, in T 8 of R 6. section 3
 which was sold to Elisha Dannels on the 11th day of December
 AD 1826, at Auditors sale in the County of Holmes Ohio, for the
 taxes &c due thereon for the years 1824 & 25, of which the above
 is a correct plat and notes of the same. Samuel Robinson Co Surveyor