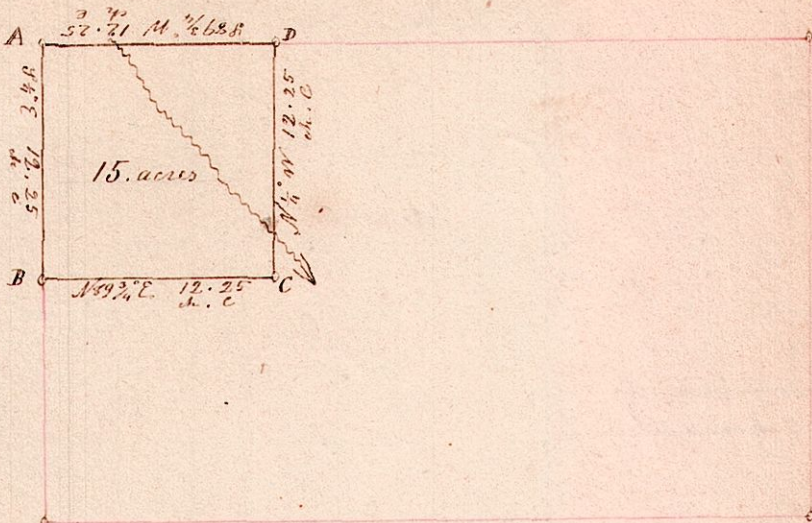


N. W. part of Lot 16. in T. 8. of R. 6. Sec 2.

No. 3
Survey



Scale 10 chains to the inch

Sections	Boundary Trees	Dist. Chains	Course	Length
A	Beech	12	S 77° W	7
	Do	12	N 19° W	15
B	W. oak	30	S 48° W	12
	Maple	15	S 62° E	16
C	Cherry	16	N 52° E	12
	E. Apple	5	N 80° W	7
D	Dogwood	8	N 10° E	10
	Ironwood	4	S 41° W	18

Surveyed the above January 2^d AD 1830.
 Being the North West part of Lot number 16. in T. 8. of R. 6. section 2.
 which was sold to Isaac Underhill on the 31st day of December AD 1827
 at the Auditor's sale in the County of Holmes Ohio, for the taxes &c. due
 thereon for the years 1826. & 27, of which the above is a correct plat
 and notes of the same
 Samuel Robinson Co. surveyor.