



THOMAS E. FERGUSON
AUDITOR OF STATE
COLUMBUS, OHIO 43216

DEPUTY AUDITORS:

JAMES A. BOLDEN
Administration

RICHARD G. NUSS
CPA
Auditing Division

RUSSELL ROUCH
Management Advising
Service

CERTIFICATION

I, Thomas Aquinas Burke, Supervisor, Land Office of the Auditor of State, duly authorized to perform the duties of the Auditor of State prescribed in Section 115.21 of the Ohio Revised Code, hereby certifies that the enclosed field notes and plats are true copies taken from records in our office. These plats and field notes are for the following townships in the United States Military District:

1. Range 4, Townships 8, 9 and 10
2. Range 5, Townships 8, 9, and 10
3. Range 6, Townships 8, 9, and 10
4. Range 7, Townships 8, 9, and 10
5. Range 8, Townships 8 and 9
6. Range 9, Townships 8 and 9

and in the Ohio River Survey

1. Range 11, Townships 14 and 15
2. Range 12, Townships 14 and 15
3. Range 13, Townships 13 and 14
4. Range 14, Townships 17 and 18
5. Range 15, Townships 19 and 20

Witness my hand and seal of the Office of the Auditor of State, at Columbus, Ohio, this Twentieth-Nine day of November in the year of Our Lord Nineteen Hundred and Eighty-Three (1983).

Thomas Aquinas Burke
Supervisor
State Land Office



U S M D
R T
8 9

West boundary of Township 9th Range 8th a fraction

August 20th 1797
from the NW corner of T^o R^o
and NE corner of T^o R^o run North

North

1st Mile North

6th
61.50
261.09
641.33
001.00

a Run 4^{ths} wide from West to East dry
from 9th to 20 up a steep bald point
a dogwood tree 6 inches diameter in the line
gully from West to East
put a dogwood where a white Oak 20 inches dia
bears S 67° E 46^{ths} and one other white Oak
10 inches diameter bears S 40° E 52^{ths} distant
hills high and steep barren of Stony points tops
of ridges and heads of hollows good Soil timber
large B & W Oak rich waxy prairie

2nd Mile North

6th
41.40
161.40
271.03
311.61
311.72
371.00
431.40
00

an Hickory 10 inches diameter in the line
gully from W to E
a black Oak 20 inches diameter
a white Oak 11 inches diameter
a large Rock 20^{ths} to the left
a Chestnut 20 inches diameter in the line
a Run 4^{ths} wide from W to E
put a dogwood post where a white Oak 14 inches
diameter bears S 36° 30' W 20^{ths} of a Chestnut 6 inches
diameter bears S 06° 30' E 26^{ths}
land of the same description as the last mile

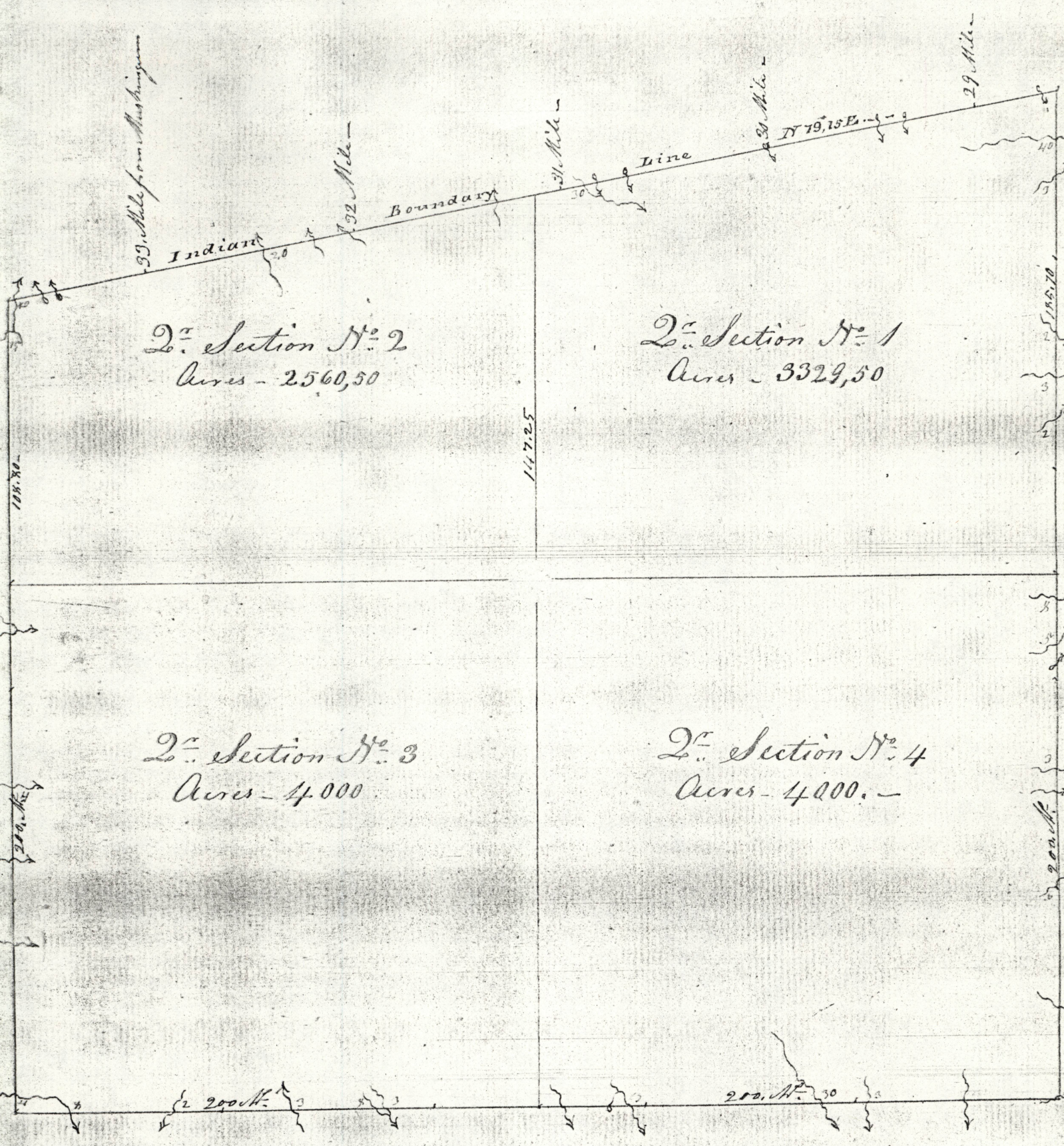
Continued

3rd Mile North

- North
 4. 26th a W. Oak, 17th diam. in the line
 1. 55 a gully from West to East, it appears to come from a spring of
 Gas Stone coal in it
 24. 42 a gully from N.W. to S.E. fine water
 3. 9. 18 a Hickory 12th diam. in the line
 20. 00 put a post corner of sections 2 & 3 T 9 R 8 and of sections
 1 & 4 of T 9 R 9, where a W. Oak 17th diam. bears N 69. 30 W 44th lbs
 marked R 9, T 9, S 4 & an Hickory 10th diam. bears S 50. 30 E 64th lbs
 marked R 8, T 9, S 3 and marked the other sections per plan
 41. 07 a W. Oak, 13th diam. in the line
 10. 00 put a Dogwood post where a gum 12th diam. bears N 59. 30 E
 68th lbs and a W. Oak 21th diam. bears N 78. 15 W. 88th lbs the first
 half of this mile is of the same description as the last two
 miles - the remainder consists of gentle inequalities brushy
 on the tops of the ridges, kind - W. Oak & W. Oak Hickory
 & chestnut excellent wheat land.

4th Mile North

7. 36 a W. Oak, 18th diam. in the line
 1. 15 a W. Oak 16th diam.
 8. 10 a Run 15 lbs side SW
 0. 10 leave the run a little West of the line another run from
 the N. joins it 20 lbs to right
 6. 80 to Ludlow's line set an Elm post from which a sugar tree
 10th diam. bears S 22 E 14th lbs & an Elm 13th diam. bears S 50 W 13th lbs mark
 with their respective ranges - measured westward 28. 43 lbs and
 found Ludlow's 34th mile post - gentle inequalities excellent
 wheat land, kind - W. Oak & W. Oak Hickory Chestnut rich weeds &
 Lucerne from the run rich bottom
 August 20th 1797 - quit for the day



2^d Section N^o 2
 Acres - 2560,50

2^d Section N^o 1
 Acres - 3329,50

2^d Section N^o 3
 Acres - 4000

2^d Section N^o 4
 Acres - 4000

TOWNSHIP N^o IX, RANGE N^o VIII

50
 SCALE of Fifty Chains to an inch