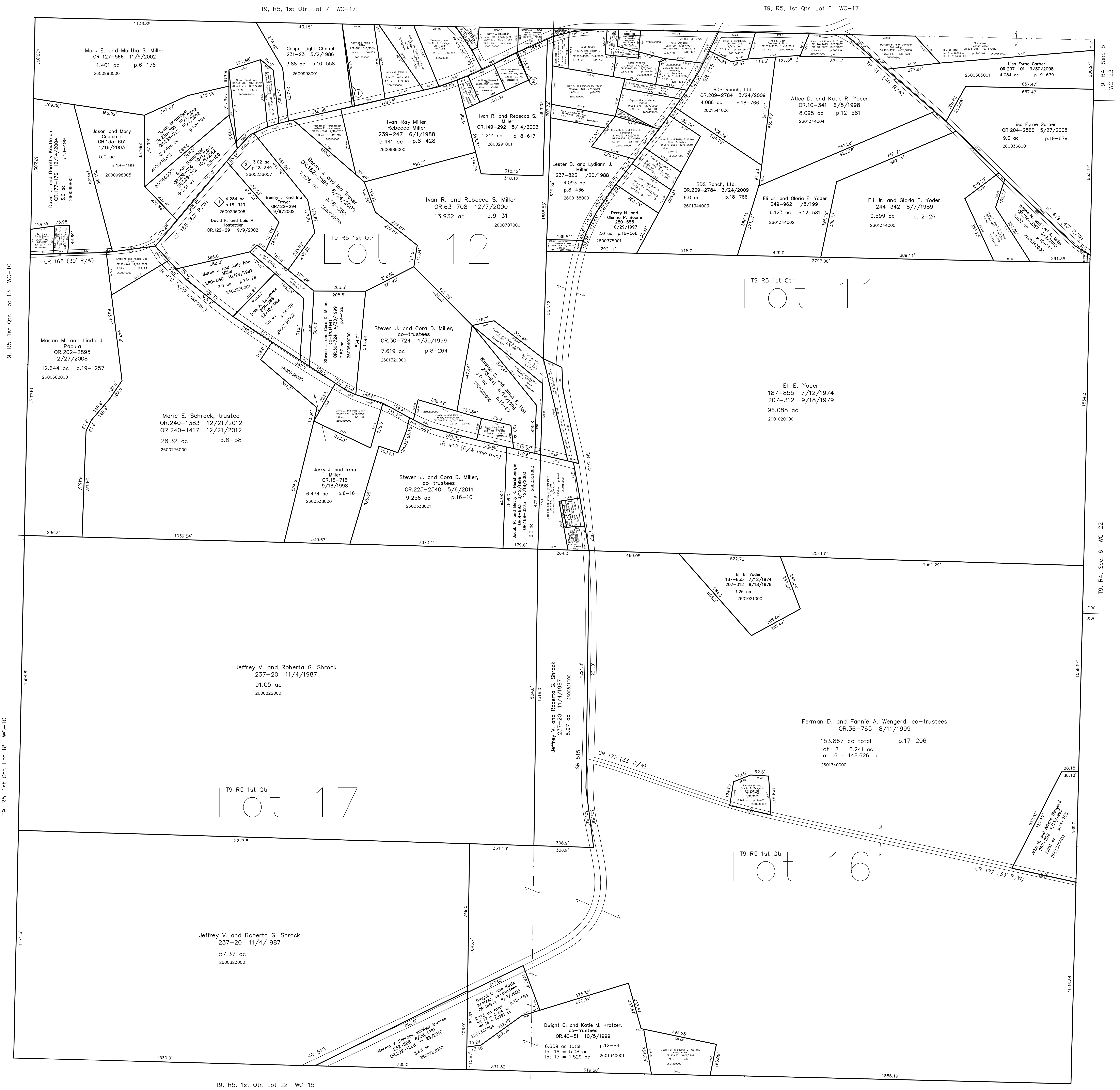


2600998003 ① Gary and Wilma J. Miller
258-609 1/13/1993
0.063 ac p.14-132

2600291000 ② Ivan R. and Rebecca S. Miller
OR 187-2810 4/4/2006
0.007 ac p.7-700



T9, R5, 1st Qtr. Lot 13 WC-10

T9, R5, 1st Qtr. Lot 18 WC-10

T9, R5, 1st Qtr. Lot 22 WC-15

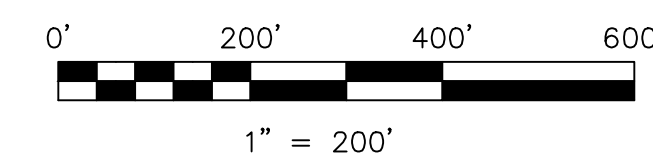
T9, R5, 1st Qtr. Lot 21 WC-15

◇ Cobblers Knob Subdivision
Plat 18-349 Platted 8/9/2002

Last Revision: 12/21/2012

T-9, R-5, 1st. Qtr.
Lots 11,12,16,17
Walnut Creek Twp.
Holmes County, Ohio

WC-16



LET IT BE KNOWN, THIS MAP HAS BEEN PREPARED AS A REFERENCE GUIDE TO PROPERTY OWNERSHIP. WE BELIEVE THIS INFORMATION TO BE CORRECT AND CURRENT. HOWEVER, IT IS NOT INTENDED FOR ANY LEGAL USE, WHETHER IT BE IN SALES, TRANSFERS, TRADES, LEASES OF ANY TYPE, ETC., AND DO NOT ACCEPT RESPONSIBILITY FOR ERRORS OF ANY NATURE OR OMISSIONS CONTAINED HEREIN.

new survey required
for next transfer