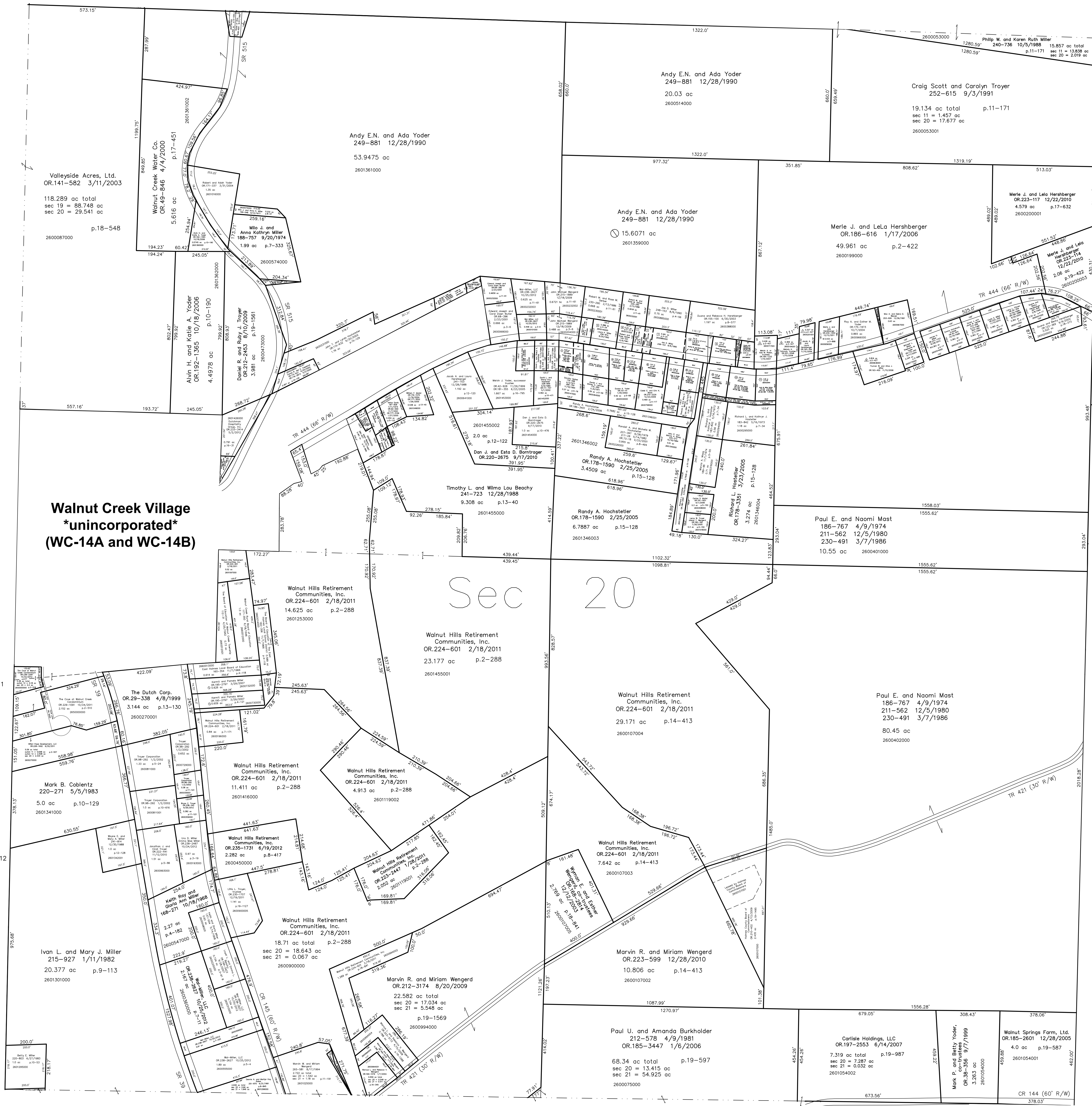


- 2601424000 ① Leroy Beachy, trustee  
OR.122-140 9/5/2002  
0.0077 ac p.10-352
- 2600900001 ② Marvin W. and Miriam Wengder  
265-581 8/17/1994  
0.05 ac p.11-191
- 2600900003 ③ Marvin W. and Miriam Wengder  
267-108 12/29/1994  
0.062 ac p.14-685

T9, R5, Sec. 11 WC-15

T9, R5, Sec. 19 WC-08



**Walnut Creek Village  
\*unincorporated\*  
(WC-14A and WC-14B)**

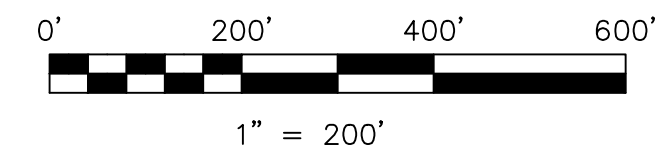
Sec 20

- The Cove at Walnut Creek Condominium Phase 1**  
Plat 2-510 Declaration OR.229-1091 10/24/2011  
2.152 ac 2650000000 Master Condominium Identification  
see plat vol.19, pgs. 1929 thru 1938 for floorplans
- Unit 9 2650000001 Eric L. Miller, Luann Miller,  
Elizabeth J. Miller, Nancy L. Ferris  
OR.234-286 5/7/2012
  - Unit 10 2650000002 Chad A. and Vicki L. Stutzman  
OR.233-64 3/27/2012
  - Unit 17 2650000003 Miller-Hope Development, LLC  
OR.228-1692 9/20/2011
  - Unit 18 2650000004 Miller-Hope Development, LLC  
OR.228-1692 9/20/2011
  - Unit 19 2650000005 Malinda Jane Hershberger  
OR.237-1876 9/5/2012
  - Unit 20 2650000006 Miller-Hope Development, LLC  
OR.228-1692 9/20/2011
  - Unit 21 2650000007 Miller-Hope Development, LLC  
OR.228-1692 9/20/2011
  - Unit 22 2650000008 Miller-Hope Development, LLC  
OR.228-1692 9/20/2011

- The Cove at Walnut Creek Condominium Phase 2**  
Plat 2-518 Declaration OR.238-2287 10/22/2012  
0.38 ac 2650000000 Master Condominium Identification  
see plat vol.19, pgs. 2146 thru 2148 for floorplans
- Unit 5 2650000009 Doran G. Horrisberger  
Alice L. Horrisberger  
OR.238-2599 10/25/2012
  - Unit 6 2650000010 Gregory E. Curry and Karen Curry  
OR.239-2846 12/4/2012

- △ Hillcrest Allotment Replat  
Plat 2-427 Platted 5/11/2006
- Lee Troyer Allotment  
Plat 3-24 Platted 7/24/1958
- Wayne Hochstetler Allotment  
Plat 3-50 Platted 4/23/1959

T9, R5, Sec. 21 WC-13



LET IT BE KNOWN, THIS MAP HAS BEEN PREPARED AS A REFERENCE  
GUIDE TO PROPERTY OWNERSHIP. WE BELIEVE THIS INFORMATION TO  
BE CORRECT AND CURRENT, HOWEVER IT IS NOT INTENDED FOR ANY  
LEGAL USE, WHETHER IT BE IN SALES, TRANSFERS, TRUSTS, LEASES  
OF ANY TYPE, ETC., AND DO NOT ACCEPT RESPONSIBILITY FOR  
ERRORS OF ANY NATURE OR OMISSIONS CONTAINED HEREIN.

○ new survey required  
for next transfer

Last Revision: 12/4/2012

**T-9, R-5, Sec.20  
Walnut Creek Twp.  
Holmes County, Ohio**

**WC-14**

T9, R4, Sec. 16 WC-20