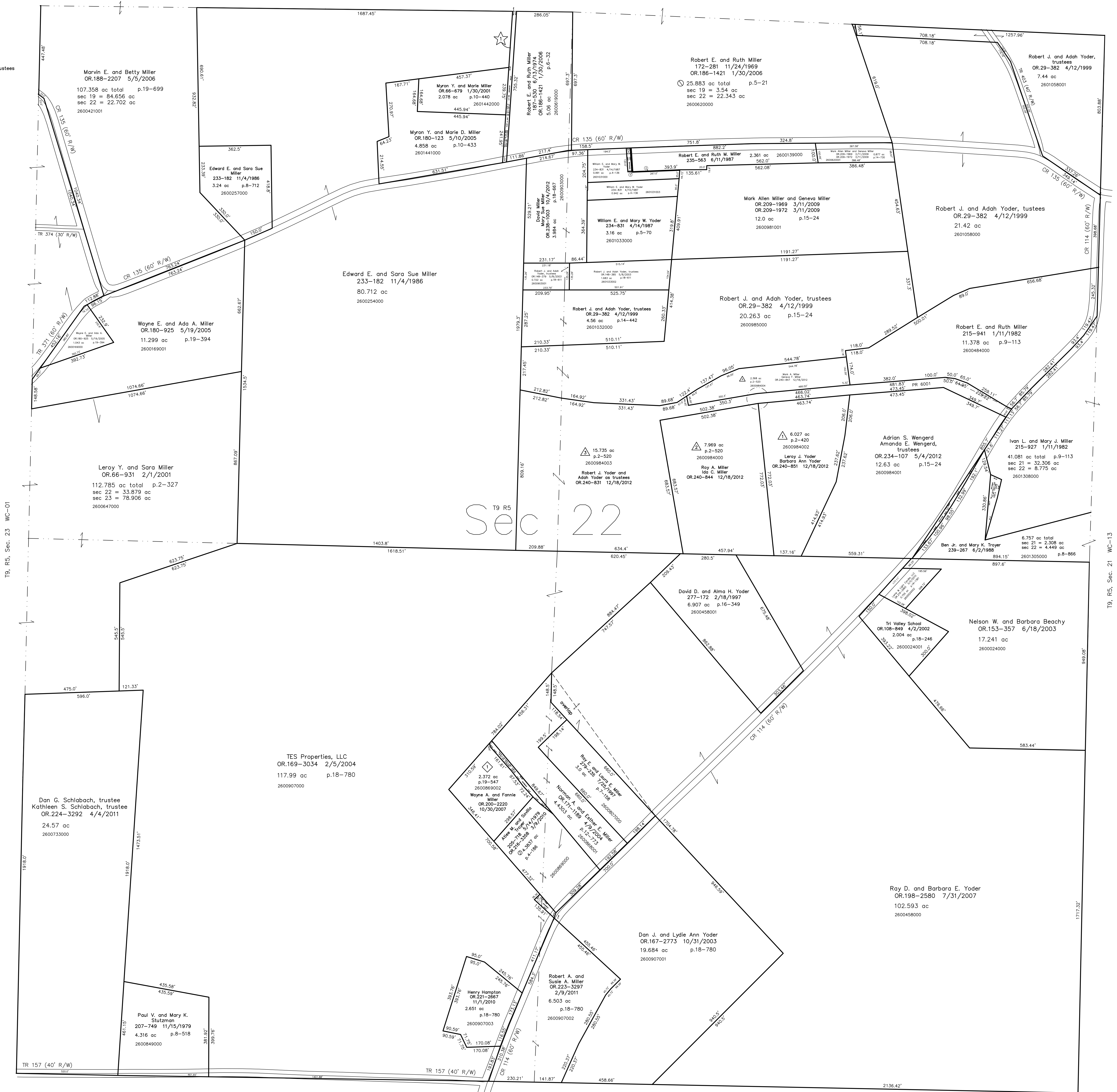


- 260098001 ① Ailee M. and Savilla Troyer
239-691 7/12/1988
0.0898 ac p.12-32
- 260103102 ② Robert E. and Ruth Miller
262-904 12/30/1993
0.014 ac p.14-401
- 260151100 ③ Adrian S. Wengerd and Amanda E. Wengerd, trustees
OR.234-107 5/4/2012
0.172 ac p.16-792
- 260013901 ⑤ William E. and Mary W. Yoder
262-902 12/30/1993
0.014 ac p.14-401
- 260103400 ⑥ William E. and Mary W. Yoder
234-831 4/14/1987
0.055 ac p.8-691

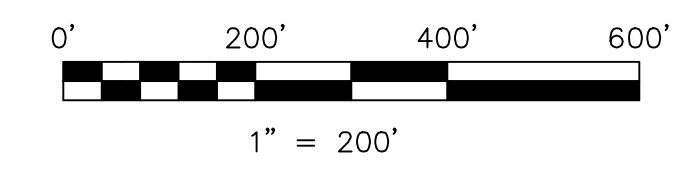


T9, R5, Sec. 23 WC-01

T9, R5, Sec. 21 WC-13

Clark Township T8, R5, Sec. 2 C-20

- ☆ Miller Road Subdivision
Plat 2-468 Platted 11/12/2008
- △ Spring Valley Subdivision
Plat 2-420 Platted 1/9/2006
Spring Valley Subdivision First Addition
Plat 2-520 Platted 12/4/2012
- ◇ Walnut Valley Subdivision
Plat 19-547 Platted 11/17/2005



LET IT BE KNOWN, THIS MAP HAS BEEN PREPARED AS A REFERENCE GUIDE TO PROPERTY OWNERSHIP. WE BELIEVE THIS INFORMATION TO BE CORRECT AND CURRENT. HOWEVER, IT IS NOT INTENDED FOR ANY LEGAL USE, WHETHER IT BE IN SALES, TRANSFERS, TRADES, LEASES OF ANY TYPE, ETC., AND DO NOT ACCEPT RESPONSIBILITY FOR ERRORS OF ANY NATURE OR OMISSIONS CONTAINED HEREIN.

new survey required for next transfer

Last Revision: 12/18/2012
T-9, R-5, Sec.22
Walnut Creek Twp.
Holmes County, Ohio

WC-07