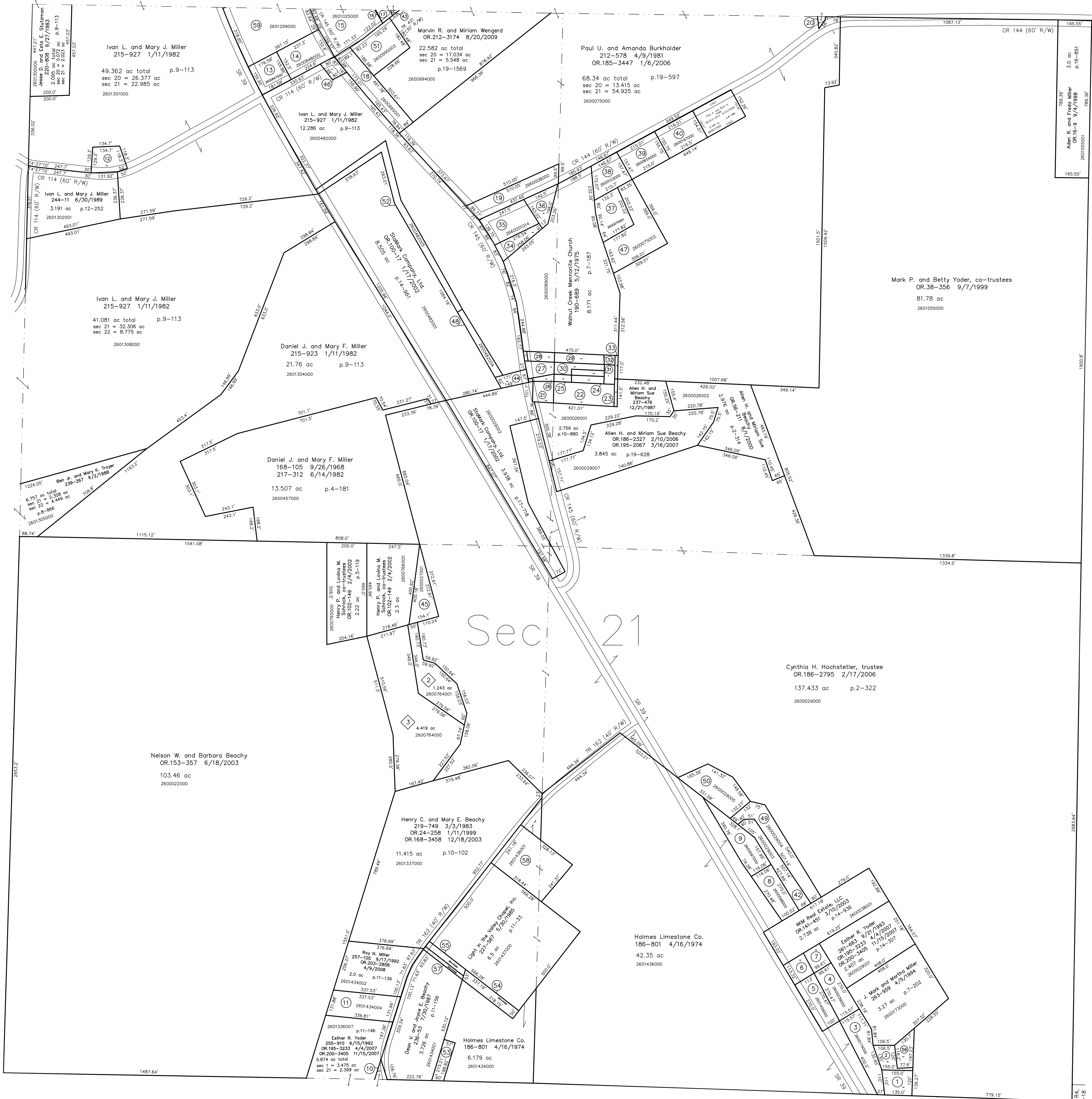


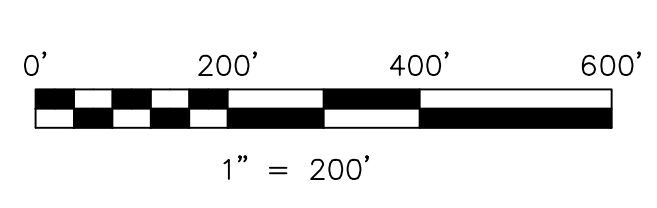
- 2600410000 ① Twila H. and Ruby H. Beachy OR.53-398 6/8/2000 0.412 ac
- 2600129000 ② Twila H. and Ruby H. Beachy OR.53-398 6/8/2000 0.268 ac
- 2600174000 ③ J. Mark and Martha Miller 263-958 4/5/1994 0.856 ac p.1-1
- 2600039000 ④ Esther R. Yoder OR.195-3233 1/1/2007 0.67 ac p.6-1
- 2601490000 ⑤ Esther R. Yoder OR.195-3233 1/1/2007 0.67 ac p.6-1
- 2601410000 ⑥ Esther R. Yoder OR.195-3233 1/1/2007 0.6605 ac p.10-325
- 2600038000 ⑦ Esther R. Yoder OR.195-3233 1/1/2007 0.251 ac p.6-1
- 2600598000 ⑧ Daniel L. and Edna A. Hostetter OR.195-3233 1/1/2007 0.67 ac p.6-1
- 2600597000 ⑨ Daniel L. and Edna A. Hostetter OR.195-3233 1/1/2007 0.853 ac p.6-1
- 2600338000 ⑩ Ralph L. and Brenda K. King OR.195-3233 1/1/2007 0.352 ac p.12-812
- 2601434004 ⑪ Roy N. Miller OR.195-3233 1/1/2007 3.191 ac p.12-252
- 2601302000 ⑫ Ivan L. and Mary J. Miller OR.195-3233 1/1/2007 0.464 ac p.8-113
- 2600847000 ⑬ Adrian S. and Amanda E. Wengert OR.195-3233 1/1/2007 0.843 ac
- 2600848000 ⑭ Adrian S. and Amanda E. Wengert OR.195-3233 1/1/2007 0.78 ac p.3-8
- 2601025000 ⑮ Marvin W. and Miriam Wengert OR.195-3233 1/1/2007 1.18 ac p.11-191
- 2600900001 ⑯ Marvin W. and Miriam Wengert OR.195-3233 1/1/2007 0.002 ac p.11-191
- 2600900000 ⑰ Walnut Hills, Inc. OR.15-75 8/20/1998 0.067 ac p.2-288
- 2600995001 ⑱ John R. and Annetta J. Weaver, co-trustees OR.195-3233 1/1/2007 1.045 ac p.11-74
- 2600008000 ⑲ Walnut Creek Mennonite Church OR.195-3233 1/1/2007 0.979 ac p.7-187
- 2601054002 ⑳ Carlisle Holdings, LLC OR.195-3233 1/1/2007 0.032 ac p.19-987
- 2600010000 ㉑ Walnut Creek Mennonite Church OR.195-3233 1/1/2007 0.28 ac
- 260001001 ㉒ Walnut Creek Mennonite Church OR.195-3233 1/1/2007 0.72 ac
- 260001002 ㉓ Walnut Creek Mennonite Church OR.195-3233 1/1/2007 0.049 ac
- 260001003 ㉔ Walnut Creek Mennonite Church OR.195-3233 1/1/2007 0.06 ac
- 260001004 ㉕ Walnut Creek Mennonite Church OR.195-3233 1/1/2007 0.125 ac
- 260001005 ㉖ Walnut Creek Mennonite Church OR.195-3233 1/1/2007 0.04 ac
- 260001006 ㉗ Walnut Creek Mennonite Church OR.195-3233 1/1/2007 0.27 ac
- 260001007 ㉘ Walnut Creek Mennonite Church OR.195-3233 1/1/2007 0.124 ac
- 260001008 ㉙ Walnut Creek Mennonite Church OR.195-3233 1/1/2007 0.305 ac
- 260001009 ㉚ Walnut Creek Mennonite Church OR.195-3233 1/1/2007 0.23 ac
- 260001010 ㉛ Walnut Creek Mennonite Church OR.195-3233 1/1/2007 0.125 ac
- 260001011 ㉜ Walnut Creek Mennonite Church OR.195-3233 1/1/2007 0.066 ac
- 260001012 ㉝ Walnut Creek Mennonite Church OR.195-3233 1/1/2007 0.038 ac
- 260001013 ㉞ Walnut Creek Mennonite Church OR.195-3233 1/1/2007 0.125 ac
- 260001014 ㉟ Walnut Creek Mennonite Church OR.195-3233 1/1/2007 0.89 ac
- 260001015 ㊱ Walnut Creek Mennonite Church OR.195-3233 1/1/2007 0.32 ac
- 2600075001 ㊲ Marcus L. and Rebecca V. Wengert OR.151-818 6/5/2003 0.746 ac p.12-225
- 2600103000 ㊳ Marcus L. and Rebecca V. Wengert OR.151-818 6/5/2003 0.653 ac p.8-383
- 2600654000 ㊴ William Dennis and Nancy L. Marshall OR.195-3233 1/1/2007 0.772 ac p.8-384
- 2600197000 ㊵ Wayne D. and Shelly R. Troyer OR.195-3233 1/1/2007 0.769 ac p.8-385
- 0000000000 ㊶ not used
- 2600029003 ㊷ Daniel L. and Edna A. Hostetter OR.195-3233 1/1/2007 0.734 ac p.16-186
- 2600994001 ㊸ Marcus L. and Rebecca V. Wengert OR.195-3233 1/1/2007 0.011 ac p.18-345
- 2600482002 ㊹ StakMark Company, Ltd. OR.100-17 1/17/2002 0.235 ac p.16-519
- 2600027001 ㊺ Henry P. and Lovina M. Schrock, co-trustees OR.102-149 2/4/2002 0.66 ac p.2-314
- 2600482003 ㊻ The Board of Holmes County Commissioners OR.97-724 12/27/2001 0.191 ac p.18-155
- 2600075002 ㊼ Marcus L. and Rebecca V. Wengert OR.151-818 6/5/2003 1.528 ac p.18-149
- 2600482004 ㊽ StakMark Company, Ltd. OR.100-17 1/17/2002 0.292 ac p.18-180
- 2600029004 ㊾ Daniel L. and Edna Hostetter OR.108-970 4/3/2002 1.074 ac p.18-251
- 2600029005 ㊿ HR Beachy, LLC OR.194-2968 2/8/2007 1.091 ac p.18-280
- 2600995003 ① Brian L. and Hannah O. Wengert OR.176-1360 11/15/2004 0.986 ac p.19-245
- 2600482005 ② StakMark Company, Ltd. OR.176-2782 12/2/2004 0.972 ac p.19-284
- 2601434007 ③ Dean V. and Joyce E. Beachy OR.183-1411 9/20/2005 0.274 ac p.19-502
- 2601434006 ④ Light in the Valley Chapel, Inc. OR.183-1408 9/20/2005 0.377 ac p.19-502
- 2601434005 ⑤ Light in the Valley Chapel, Inc. OR.183-1405 9/20/2005 0.173 ac p.19-502
- 2600029006 ⑥ Twila and Ruby Beachy OR.186-2324 2/10/2006 0.32 ac p.19-627
- 2601434008 ⑦ Dean V. and Joyce E. Beachy OR.186-2363 2/13/2006 0.101 ac p.19-629
- 2601436001 ⑧ Light in the Valley Chapel, Inc. OR.66-480 1/25/2001 1.79 ac p.17-772
- 2601299000 ⑨ Dennis A. and Marilyn Kay Raber OR.186-870 6/21/1991 1.946 ac p.8-945

T9, R5, Sec. 22 WC-07



- ① Schrock Subdivision Replat of Lot 1 Plat 2-345 Platted 3/6/2002
- 2600764001 ② Robert Michael and Sue D. Schrock OR.107-807 3/21/2002 1.243 ac p.12-345
- 2600764000 ③ David W. Beachy OR.108-569 3/29/2002 4.419 ac p.2-345

T9, R4, Sec. 25 WC-19



LET IT BE KNOWN, THIS MAP HAS BEEN PREPARED AS A REFERENCE GUIDE TO PROPERTY OWNERSHIP. WE BELIEVE THIS INFORMATION TO BE CORRECT AND CURRENT, HOWEVER IT IS NOT INTENDED FOR ANY LEGAL USE, WHETHER IT BE IN SALES, TRANSFERS, TRUSTS, LEASES OF ANY TYPE, ETC., AND DO NOT ACCEPT RESPONSIBILITY FOR ERRORS OF ANY NATURE OR OMISSIONS CONTAINED HEREIN.

new survey required for next transfer

Last Revision: 9/23/2009

**T-9, R-5, Sec.21
Walnut Creek Twp.
Holmes County, Ohio**

WC-13