

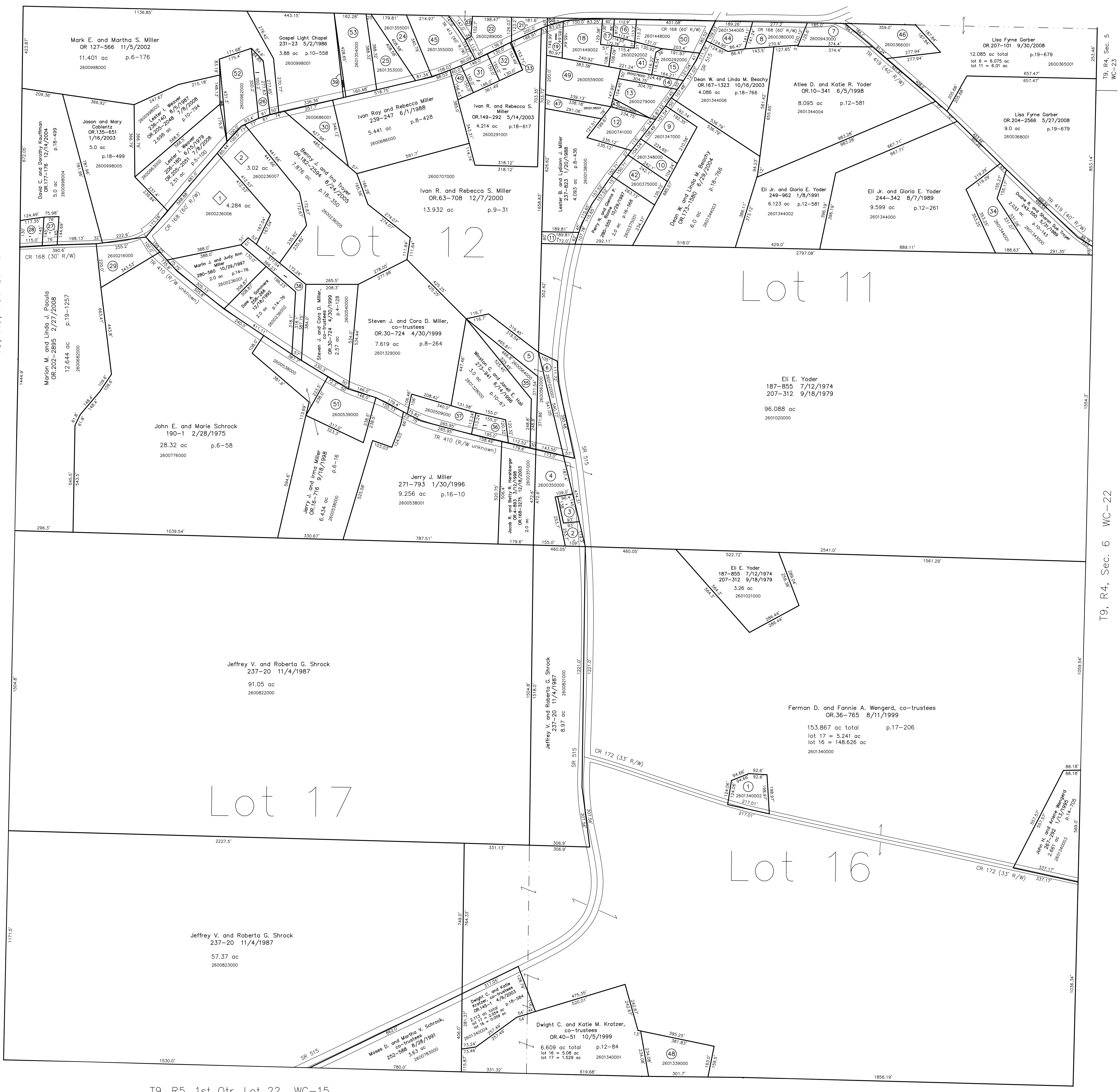
- 2601340002 ① Fernan D. and Fannie A. Wenger, co-trustees
OR.36-768 8/11/1999
0.767 ac p.12-402
- 2600352000 ② Jacob R. and Betty J. Hershberger
OR.4-893 3/12/1998
OR.168-3275 12/18/2003
0.293 ac p.4-18
- 2600353000 ③ Jacob R. and Betty J. Hershberger
OR.4-893 3/12/1998
OR.168-3275 12/18/2003
0.293 ac p.3-22
- 2600355000 ④ Jacob R. and Betty J. Hershberger
OR.4-893 3/12/1998
OR.168-3275 12/18/2003
1.716 ac p.4-49
- 2600562000 ⑤ Wayne L. and Linda Kay Miller
248-556 9/5/1990
1.65 ac p.1-1027
- 2601020001 ⑥ Wayne L. and Linda Kay Miller
253-139 10/16/1991
0.732 ac p.12-771
- 2600943000 ⑦ Jason and Rhoda F. Troyer
OR.196-2423 5/2/2007
OR.198-3052 8/8/2007
0.75 ac p.3-382
- 2600380000 ⑧ Abe L. and Frances A. Mast
156-351 8/3/1985
0.77 ac
- 2601347000 ⑨ Alvin E. and Betty S. and David A. Rober
OR.176-2868 12/16/2004
1.0 ac p.10-151
- 2601348000 ⑩ Alvin E. and Betty S. Rober
OR.11-154 6/22/1998
0.956 ac p.8-332
- 2600706000 ⑪ Ivan R. and Rebecca S. Miller
OR.63-708 12/7/2000
0.249 ac p.9-31
- 2600741000 ⑫ Kenneth L. Schlabach and Edith A. Helmuth
206-272 6/25/1979
OR.18-952 9/5/1998
1.0 ac p.8-415
- 2600279000 ⑬ Crystal Moe Hostetter, trustee
OR.63-678 12/7/2000
0.898 ac p.8-415
- 2600278000 ⑭ Crystal Moe Hostetter, trustee
OR.63-678 12/7/2000
0.361 ac p.8-427
- 2600292000 ⑮ Moses S. and Katie Wengard, co-trustees
278-507 6/4/1991
0.635 ac p.16-438
- 2600809000 ⑯ Moses S. and Katie Wengard
OR.163-460 9/5/2003
0.281 ac p.5-59
- 2600292001 ⑰ Moses S. and Katie Wengard
OR.163-460 9/5/2003
0.287 ac p.10-663
- 2601449002 ⑱ Roy A. and Miriam M. Yoder
OR.202-1328 2/4/2008
1.074 ac p.11-159
- 2600558000 ⑲ Roy A. and Miriam M. Yoder
OR.202-1328 2/4/2008
0.308 ac p.11-159
- 2601137000 ⑳ Wayne-Dalton Corp.
200-840 1/17/1987
225-668 12/6/1984
225-669 12/6/1984
0.13 ac p.4-132
- 2600287000 ㉑ Betty J. Hostetter
151-75 9/3/1963
225-570 11/27/1984
0.37 ac p.4-4
- 2600289000 ㉒ Betty J. Hostetter
203-411 9/25/1978
225-570 11/27/1984
0.84 ac p.8-252
- 2600965000 ㉓ Raymond L. and Anna Hershberger
256-832 8/20/1992
0.2 ac p.7-82
- 2601355001 ㉔ Neil S. and Denise L. Anderson
OR.69-514 3/4/2001
1.0 ac p.12-580
- 2601353000 ㉕ Gary and Wilma J. Miller
221-103 8/1/1983
1.0 ac p.10-169
- 2600964000 ㉖ Lester I. Weaver
206-185 8/15/1979
OR.205-2051 7/8/2008
0.43 ac p.7-750
- 2600007000 ㉗ Gary J. and Kendra Loraine Yoder
OR.197-3070 6/21/2007
0.24 ac p.7-173
- 2600008000 ㉘ Gary J. and Kendra Loraine Yoder
OR.197-3070 6/21/2007
0.36 ac p.7-101
- 2600216000 ㉙ Amos M. and Angela Moe Chupp
OR.97-440 12/26/2001
1.03 ac p.6-58
- 2600686001 ㉚ Jr. and Jenney Lou Rober
245-42 10/12/1989
1.0 ac p.12-315
- 2600926000 ㉛ Ivan R. and Rebecca S. Miller
OR.187-2810 4/4/2006
0.5 ac p.7-249
- 2600925000 ㉜ Ivan R. and Rebecca S. Miller
OR.187-2810 4/4/2006
0.45 ac p.7-700
- 2600291000 ㉝ Ivan R. and Rebecca S. Miller
OR.187-2810 4/4/2006
0.007 ac p.7-700
- 2601344001 ㉞ Duane and Sharon Sue Troyer
244-168 7/21/1989
1.5 ac p.12-260
- 2600564000 ㉟ Wayne L. and Linda Kay Miller
248-556 9/5/1990
0.81 ac p.8-311
- 2600537000 ㊱ Steven J. and Cora D. Miller, co-trustees
OR.54-778 7/5/2000
0.45 ac p.8-231
- 2600509000 ㊲ Steven J. and Cora D. Miller, co-trustees
OR.30-724 4/30/1999
0.9 ac p.5-89
- 2600236003 ㊳ Dale A. Sommers
258-266 12/18/1992
0.892 ac p.14-111
- 2600998003 ㊴ Gary and Wilma J. Miller
221-103 8/1/1983
0.063 ac p.14-132
- 2600924000 ㊵ Ivan R. and Rebecca S. Miller
OR.187-2810 4/4/2006
0.259 ac p.8-290
- 2600292002 ㊶ Moses S. and Katie Wengard
278-29 4/25/1997
0.6703 ac p.14-639
- 2600375000 ㊷ Alvin E. and Betty S. Rober
OR.11-154 6/22/1998
0.785 ac p.8-333
- 2600279001 ㊸ Kenneth L. and Edith A. Schlabach
OR.15-501 8/28/1998
0.102 ac p.18-840
- 2601344005 ㊹ David J. Schlabach
OR.170-1046 2/27/2004
0.512 ac p.18-768
- 2601355000 ㊺ Timothy J. and Renita J. Nehinger
OR.1-298 1/6/1998
1.501 ac p.8-272
- 2600368001 ㊻ Trustees of Faith Christian Fellowship
OR.188-1195 4/25/2005
1.203 ac p.19-679
- 2600138001 ㊼ Roy A. and Miriam M. Yoder
OR.202-1328 2/4/2008
0.5 ac p.18-851
- 2601339000 ㊽ Dwight C. and Katie M. Kratzer, co-trustees
OR.40-53 10/5/1999
1.51 ac p.10-112
- 2600559000 ㊾ Roy A. and Miriam M. Yoder
OR.202-1328 2/4/2008
1.639 ac p.8-371
- 2601448000 ㊿ Moses S. and Katie Wengard
278-29 4/25/1997
1.2237 ac p.9-462
- 2600539000 ① Jerry J. and Irma Miller
OR.16-716 9/18/1986
1.6 ac p.4-128
- 2600962000 ② Lester I. Weaver
206-185 8/15/1979
OR.205-2051 7/8/2008
1.5 ac p.5-84
- 2601354000 ③ Gary and Wilma J. Miller
221-103 8/1/1983
1.5 ac p.10-169

T9, R5, 1st Qtr. Lot 13 WC-10

T9, R5, 1st Qtr. Lot 18 WC-10

T9, R5, 1st Qtr. Lot 7 WC-17

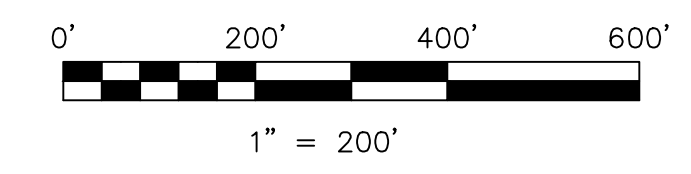
T9, R5, 1st Qtr. Lot 6 WC-17



T9, R5, 1st Qtr. Lot 22 WC-15

T9, R5, 1st Qtr. Lot 21 WC-15

- ① Gobblers Knob Subdivision
Plat 18-349 Platted 8/9/2002
- 2600236006 ① David F. and Lois S. Hostetter
OR.122-291 9/9/2002
4.284 ac p.18-349
- 2600236007 ② Benny J. and Ina Troyer
OR.122-294 9/9/2002
3.02 ac p.18-349



LET IT BE KNOWN, THIS MAP HAS BEEN PREPARED AS A REFERENCE GUIDE TO PROPERTY OWNERSHIP. WE BELIEVE THIS INFORMATION TO BE CORRECT AND CURRENT. HOWEVER, IT IS NOT INTENDED FOR ANY LEGAL USE, WHETHER IT BE IN SALES, TRANSFERS, TRADES, LEASES OF ANY TYPE, ETC., AND DO NOT ACCEPT RESPONSIBILITY FOR ERRORS OF ANY NATURE OR OMISSIONS CONTAINED HEREIN.

new survey required for next transfer

Last Revision: 9/30/2008

**T-9, R-5, 1st. Qtr.
Lots 11,12,16,17
Walnut Creek Twp.
Holmes County, Ohio**

WC-16

T9, R4, Sec. 5 WC-23

T9, R4, Sec. 6 WC-22