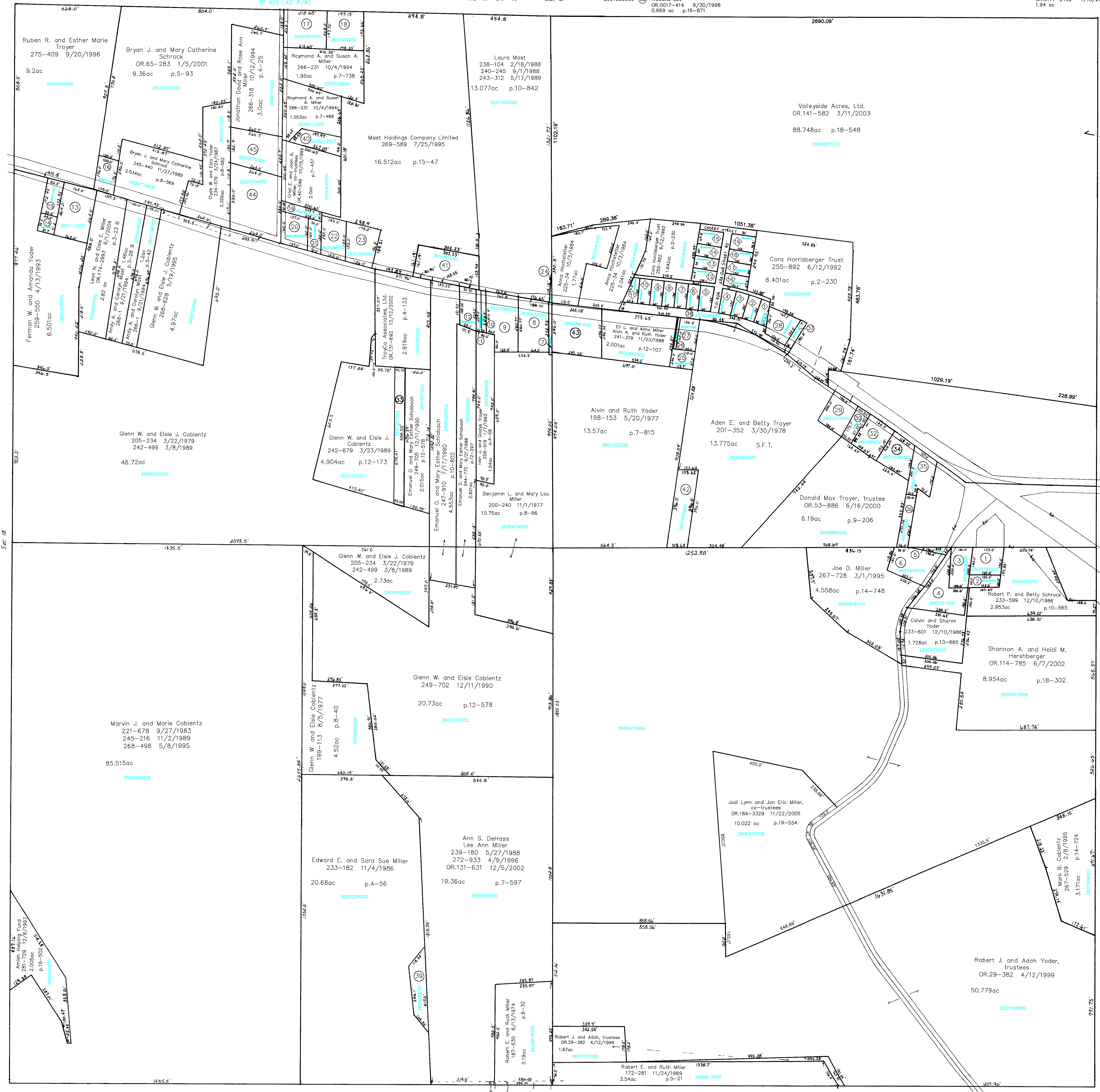


- 2600793000 ① SCHROCK ROBERT P. AND BETTY 180-451 6/12/1972 0.498 ac
- 2600794000 ② SCHROCK ROBERT P. AND BETTY 180-451 6/12/1972 0.213 ac p.4-41
- 2600818000 ③ MILLER LESTER B. AND LYDIANN 274-858 8/21/1996 0.459 ac
- 2601011000 ④ YODER CALVIN AND SHARON 177-134 6/7/1971 0.709 ac p.4-57
- 2600817000 ⑤ TROYER DWAYNE A. AND MARY ELLEN YODER, RAY E. AND ESTHER MARIE OR.0134-50 1/2/2003 0.09 ac S.F.T.
- 2600439000 ⑥ MILLER VIVIAN F. ETAL OR.0013-46 7/21/1998 0.871 ac
- 2601002000 ⑦ YODER ALVIN AND RUTH 198-153 5/20/1977 0.098 ac p.7-815
- 2600432000 ⑧ MILLER BENJAMIN L. AND MARY LOU 198-273 6/22/1977 1.000 ac p.7-444
- 2600398000 ⑨ SCHLABACH EMANUEL D. AND MARY ESTHER 239-761 7/20/1988 1.01 ac p.10-842
- 2600894000 ⑩ TROYER IVAN J. AND GLADYS 258-519 1/7/1993 0.12 ac
- 2600893000 ⑪ TROYER IVAN J. AND GLADYS 258-519 1/7/1993 0.12 ac p.3-69
- 2600895000 ⑫ TROYER IVAN J. AND GLADYS 258-519 1/7/1993 0.37 ac p.3-69
- 2601110000 ⑬ SCHROCK'S WOODCRAFTS INC. 204-202 12/5/1978 1.0 ac
- 2601110000 ⑭ SCHROCK'S WOODCRAFTS INC. 204-202 12/5/1978 0.168 ac
- 2601112000 ⑮ SCHROCK'S WOODCRAFTS INC. 204-202 12/5/1978 0.33 ac
- 2600771000 ⑯ SCHROCK BRYAN J. AND MARY CATHERINE OR.0065-28 1/5/2001 0.4 ac p.3-93
- 2600797000 ⑰ SCHROCK RONALD E. 206-219 6/19/1979 1.0 ac p.7-574
- 2601401000 ⑱ SCHROCK RONALD E. 244-609 8/16/1984 0.888 ac p.10-295
- 2600800000 ⑳ Anna J. Weaver, trustee OR.182-756 8/4/2005 0.19 ac
- 2600599000 ㉑ Anna J. Weaver, trustee OR.182-756 8/4/2005 0.258 ac
- 2601096000 ㉒ MAST HOLDING COMPANY LIMITED 269-589 7/25/1995 0.533 ac
- 2601095000 ㉓ MAST HOLDING COMPANY LIMITED 269-589 7/25/1995 0.628 ac p.8-101
- 2600141001 ㉔ HOCHSTETLER ANNA 225-34 10/3/1984 0.007 ac
- 2600672000 ㉕ YODER RUTH OR.0071-252 4/2/2001 0.24 ac p.3-738
- 2600672001 ㉖ YODER RUTH OR.0071-252 4/2/2001 0.04 ac p.3-748
- 2600671000 ㉗ YODER RUTH OR.0071-252 4/2/2001 0.367 ac
- 2600500000 ㉘ MILLER ERVIN D. AND EMMA 174-586 9/5/1970 268-998 6/9/1995 0.47 ac SFT
- 2600370000 ㉙ LENHART LEE L. AND PATRICIA SUE 143-493 7/28/1960 232-48 7/3/1991 0.643 ac
- 2600300000 ㉚ Mark A. and Jessica D. Hochstetler OR.184-2043 11/7/2005 0.26 ac p.19-539
- 0000000000 ㉛ not used
- 2601085000 ㉜ NOSSIS, LLC OR.0017-414 9/30/1998 0.669 ac p.16-871
- 2600100103 ㉝ SCHLABACH EMANUEL D. AND MARY ESTHER OR.0151-675 6/4/2003 0.782 ac p.18-635
- 2601008000 ㉞ BEACHY ALVIN J. AND MAUDE CO-TRUSTEES OR.0168-2475 12/8/2003 0.564 ac p.9-198
- 2600277000 ㉟ HERRISBERGER RONALD W. AND GERALDINE 150-333 6/9/1983 0.36 ac p.3-958
- 2601370000 ㊱ TROYER DONALD MAX TRUSTEE OR.0053-886 6/16/2000 0.3213 ac p.10-216
- 2600501000 ㊲ MILLER ERVIN D. AND EMMA 198-654 12/10/1976 268-998 6/9/1995 0.106 ac p.7-743 SFT
- 2600269001 ㊳ CORA HERRISBERGER TRUST 255-892 6/12/1992 0.858 ac p.2-230
- 2600255001 ㊴ DEHASS, ANN S. MILLER, LEE ANN 258-800 2/2/1993 272-833 4/9/1996 OR.0131-631 12/5/2002 0.54 ac p.14-145
- 2600112001 ㊵ MILLER CRIST E. AND JOAN A. CO-TRUSTEES OR.0040-546 10/15/1999 0.447 ac p.14-824
- 2601402001 ㊶ MAST HOLDING COMPANY LIMITED 267-813 2/7/1995 1.139 ac p.15-47
- 2601505000 ㊷ TROYER ADEN E. AND BETTY 271-155 12/6/1995 271-157 12/6/1995 0.932 ac p.14-967
- 2600881000 ㊸ TARASTAR LIMITED OR.0169-2026 1/21/2004 1.367 ac p.12-532
- 2600054000 ㊹ BONTRAGER VERNA TRUSTEE OR.0177-2492 1/18/2005 1.94 ac
- 2600572000 ㊺ Jonathon David and Rose Ann Miller 266-318 10/12/1994 1.15 ac



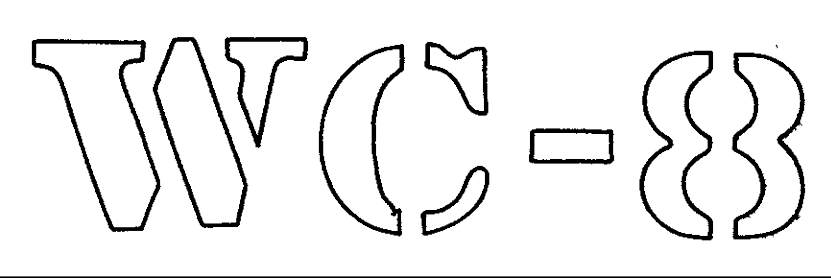
- Albert Harrisberger's Subdivision Plat 3-70 Platted 8/29/1959
- 2600273000 ① Npt HERRISBERGER DORAN AND ALICE 154-544 1/7/1985 236-655 10/2/1987
- 2600499000 ② SE pt MILLER ERVIN D. AND EMMA 174-586 9/5/1970 268-998 6/9/1995 SFT
- 2600274000 ③ HERRISBERGER DORAN AND ALICE 154-544 1/7/1985 236-655 10/2/1987
- 2600275000 ④ HERRISBERGER DORAN AND ALICE 154-544 1/7/1985 236-655 10/2/1987
- 2600276000 ⑤ HERRISBERGER DORAN AND ALICE 154-544 1/7/1985 236-655 10/2/1987

- 2600258000 ⑥ CORA HERRISBERGER TRUST 255-892 6/12/1992
- 2600259000 ⑦ CORA HERRISBERGER TRUST 255-892 6/12/1992
- 2600260000 ⑧ CORA HERRISBERGER TRUST 255-892 6/12/1992
- 2600261000 ⑨ CORA HERRISBERGER TRUST 255-892 6/12/1992
- 2600262000 ⑩ CORA HERRISBERGER TRUST 255-892 6/12/1992
- 2600263000 ⑪ CORA HERRISBERGER TRUST 255-892 6/12/1992
- 2600264000 ⑫ CORA HERRISBERGER TRUST 255-892 6/12/1992
- 2600265000 ⑬ CORA HERRISBERGER TRUST 255-892 6/12/1992

- 2600266000 ⑭ CORA HERRISBERGER TRUST 255-892 6/12/1992
- 2600267000 ⑮ CORA HERRISBERGER TRUST 255-892 6/12/1992
- 2600268000 ⑯ CORA HERRISBERGER TRUST 255-892 6/12/1992
- 2600223001 ⑰ HERSHBERGER PATRICIA F. 141-494 10/3/1959 194-502 6/23/1976
- 2600223000 ⑱ HERSHBERGER PATRICIA F. 141-494 10/3/1959 194-502 6/23/1976
- 2600726000 ⑲ SCHIE JOHN R. AND SALLY J. 143-262 6/9/1960
- 2600727000 ⑳ SCHIE JOHN R. AND SALLY J. 143-262 6/9/1960

T-9, R-5, Sec. 19 Walnut Creek Twp.

HOLMES COUNTY, OHIO
Last Revision: 11/22/2005



LET IT BE KNOWN, THIS MAP HAS BEEN PREPARED AS A REFERENCE GUIDE TO PROPERTY OWNERSHIP. WE BELIEVE THIS INFORMATION TO BE CORRECT AND CURRENT, HOWEVER, IT IS NOT INTENDED FOR ANY LEGAL USE, WHETHER IT BE IN SALES, TRANSFERS, TRADES, LEASES OF ANY TYPE, ETC., AND DO NOT ACCEPT RESPONSIBILITY FOR ERRORS OF ANY NATURE OR OMISSIONS CONTAINED HEREIN.

SCALE: 1" = 200'

