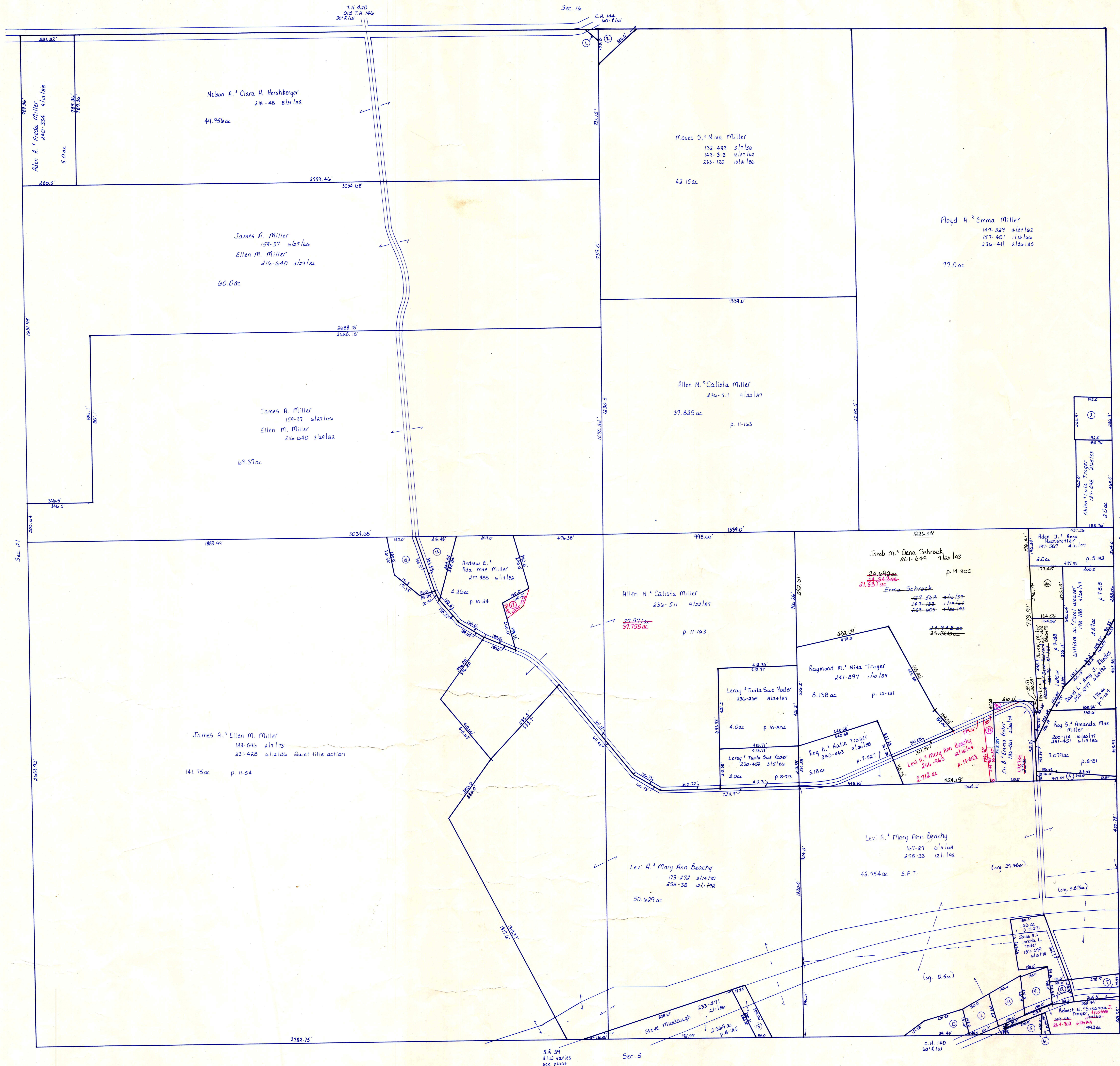


C.H. 144  
60' R/W



Sec. 24

Sec. 21

2,653.52'

2782.75'

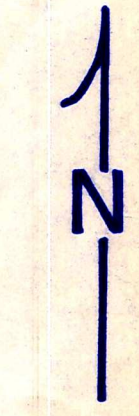
Sec. 5

S.R. 39  
R/W varies  
see plans

C.H. 140  
60' R/W

C.H. 141  
30' R/W

SCALE: 1" = 200'



T-9, R-4, Sec. 25  
Walnut Creek Twp.

HOLMES COUNTY, OHIO

PRINTED  
5/6/93

WC-19

LET IT BE KNOWN, THIS MAP HAS BEEN PREPARED AS A REFERENCE GUIDE TO PROPERTY OWNERSHIP. WE BELIEVE THIS INFORMATION TO BE CORRECT AND CURRENT, HOWEVER, IT IS NOT INTENDED FOR ANY LEGAL USE, WHETHER IT BE IN SALES, TRANSFERS, TRADES, LEASES OF ANY TYPE, ETC., AND DO NOT ACCEPT RESPONSIBILITY FOR ERRORS OF ANY NATURE OR OMISSIONS CONTAINED HEREIN.