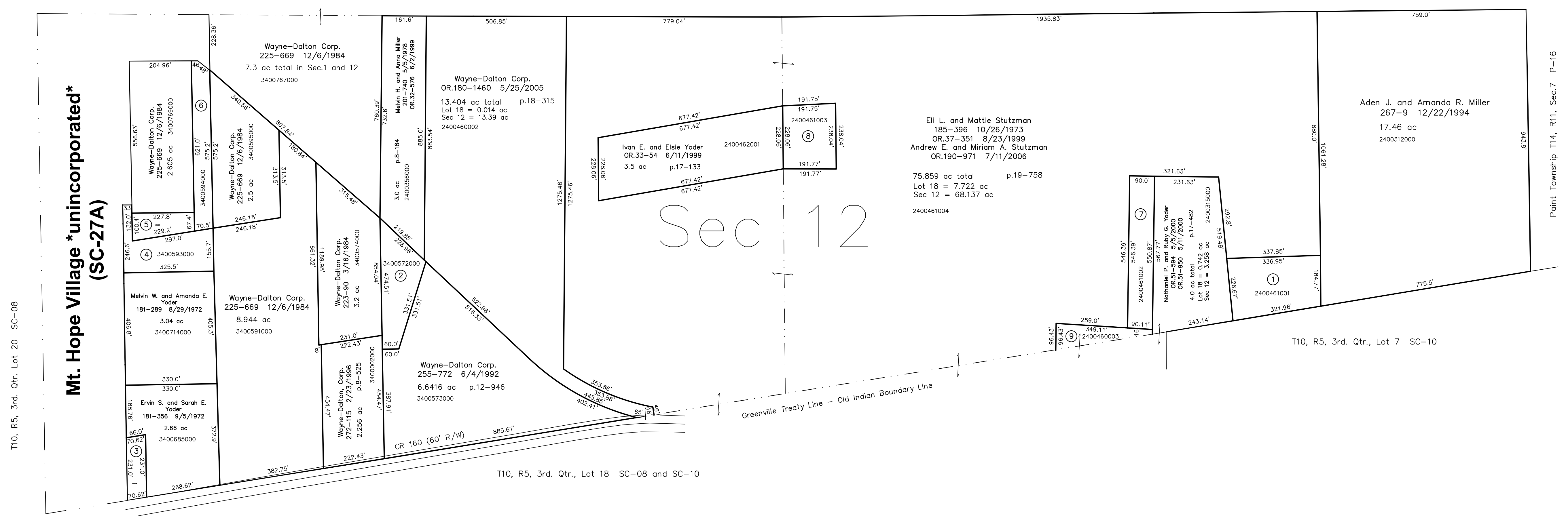


- 2400461001 ① Joseph A. Miller
OR 172-2499 6/1/2004
1.551 ac p.14-878
- 3400572000 ② Wayne-Dalton Corp.
225-669 12/6/1984
1.11 ac p.12-214
- 3400571000 ③ Wayne-Dalton Corp.
225-669 12/6/1984
0.3 ac
- 3400593000 ④ Wayne-Dalton Corp.
225-669 12/6/1984
1.1 ac p.3-33 B
- 3400592000 ⑤ Wayne-Dalton Corp.
225-669 12/6/1984
0.395 ac p.3-34 B
- 3400594000 ⑥ Wayne-Dalton Corp.
225-669 12/6/1984
1.06 ac p.5-18
- 2400461002 ⑦ Nathaniel P. and Ruby C. Yoder
OR 116-799 7/26/2002
1.134 ac p.18-341
- 2400461003 ⑧ Ivan E. and Elsie Yoder
OR 174-1503 8/12/2004
1.026 ac p.19-153
- 2400460003 ⑨ Eli L. and Mottie Stutzman
OR 190-969 7/11/2006
0.454 ac p.19-758

T14, R12, Sec.1 SC-33

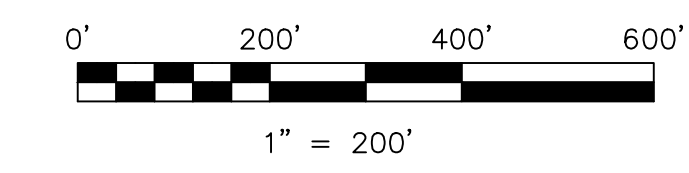


T10, R5, 3rd. Qtr., Lot 20 SC-08

T10, R5, 3rd. Qtr., Lot 18 SC-08 and SC-10

T10, R5, 3rd. Qtr., Lot 7 SC-10

Point Township T14, R11, Sec.7 P-16



LET IT BE KNOWN, THIS MAP HAS BEEN PREPARED AS A REFERENCE GUIDE TO PROPERTY OWNERSHIP. WE BELIEVE THIS INFORMATION TO BE CORRECT AND CURRENT, HOWEVER IT IS NOT INTENDED FOR ANY LEGAL USE, WHETHER IT BE IN SALES, TRANSFERS, TRADES, LEASES OF ANY TYPE, ETC., AND DO NOT ACCEPT RESPONSIBILITY FOR ERRORS OF ANY NATURE OR OMISSIONS CONTAINED HEREIN.

⊙ new survey required for next transfer

Last Revision: 7/11/2006
T-14, R-12, Sec.12
Salt Creek Twp.
Holmes County, Ohio

SC-32

