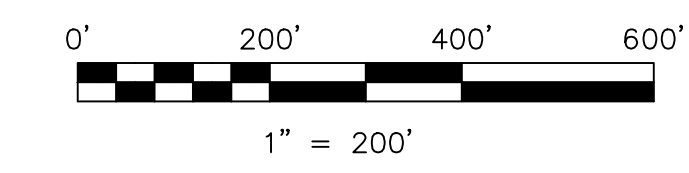
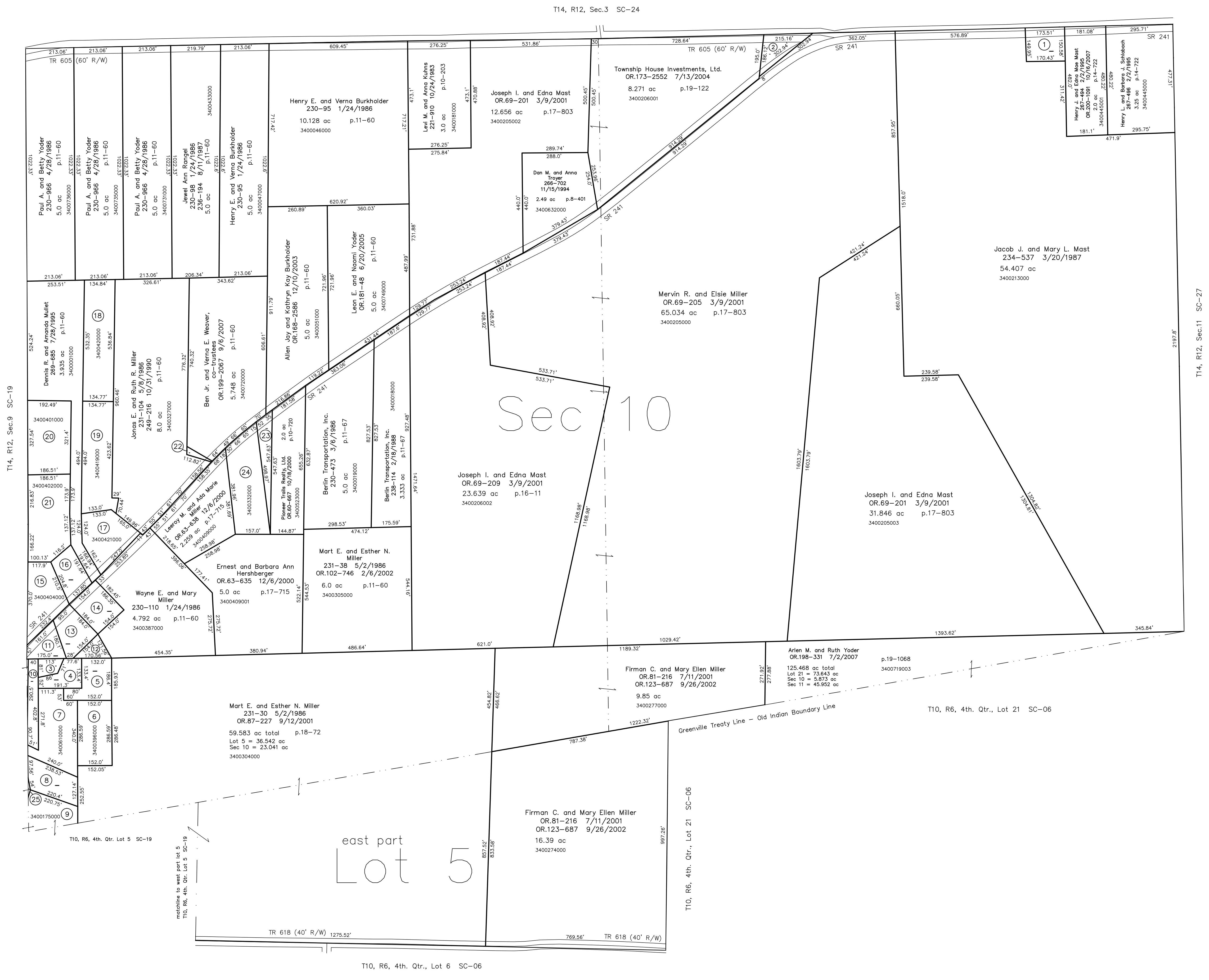


- 3400224000 ① Henry J. and Edna Mae Mast
OR.200-1091 10/16/2007
0.583 ac p.10-708
- 3460013000 ② Trustees of Salt Creek Tp.
75-55 12/11/1906
0.46 ac
- 3400398000 ③ Three M Associates, LTD.
OR.4-976 3/16/1998
0.164 ac p.7-224
- 3400399000 ④ Three M Associates, LTD.
OR.4-976 3/16/1998
0.425 ac p.10-11
- 3400400000 ⑤ Three M Associates, LTD.
OR.4-976 3/16/1998
0.6622 ac p.10-521
- 3400396000 ⑥ Three M Associates, LTD.
OR.4-976 3/16/1998
1.0 ac p.10-381
- 3400610000 ⑦ Three M Associates, LTD.
OR.4-976 3/16/1998
1.3549 ac p.10-521
- 3400306001 ⑧ Three M Associates
OR.43-423 12/28/1999
0.881 ac p.17-325
- 3400175000 ⑨ Henry I. and Anna Kline
230-118 1/27/1986
0.85 ac p.10-708
- 3400611000 ⑩ Three M Associates, LTD.
OR.4-976 3/16/1998
0.4186 ac p.7-457
- 3400397000 ⑪ Three M Associates, LTD.
OR.4-976 3/16/1998
0.42 ac p.7-457
- 3400527000 ⑫ Three M Associates, LTD.
OR.4-976 3/16/1998
0.208 ac p.10-557
- 3400526000 ⑬ Three M Associates, LTD.
OR.4-976 3/16/1998
0.433 ac p.5-53
- 3400388000 ⑭ Wayne E. and Mary Miller
176-668 5/3/1971
229-716 12/16/1985
0.85 ac p.4-170
- 3400404000 ⑮ Dorothy E. and Mark E. Yoder
Marcia D. and Arlin A. Schlabach
OR.190-2032 7/25/2006
0.98 ac p.5-53
- 3400405000 ⑯ Dennis and Amanda Mullet
OR.190-2034 7/25/2006
0.555 ac p.11-60
- 3400421000 ⑰ Eli A. and Edna Yoder
OR.174-3085 9/3/2004
1.0 ac p.5-109
- 3400420000 ⑱ Eli A. and Edna Yoder
OR.174-3085 9/3/2004
1.537 ac p.11-60
- 3400419000 ⑲ Eli A. and Edna Yoder
OR.174-3085 9/3/2004
1.654 ac p.12-713
- 3400401000 ⑳ Dennis and Amanda Mullet
252-292 7/24/1991
1.411 ac p.12-713
- 3400402000 ㉑ Dennis and Amanda Mullet
249-324 5/15/1990
1.563 ac p.12-499
- 3400720001 ㉒ Jonas E. and Ruth Miller
274-97 6/25/1996
0.052 ac p.16-134
- 3400332001 ㉓ Pioneer Trails Realty, Ltd.
OR.60-667 10/18/2000
0.44 ac p.17-315
- 3400332000 ㉔ Leroy and Ada Marie Miller
254-1006 3/30/1992
1.56 ac p.10-954
- 3400301000 ㉕ Mart E. and Esther N. Miller
231-38 5/2/1986
OR.178-1023 2/16/2005
0.01 ac p.19-313



LET IT BE KNOWN, THIS MAP HAS BEEN PREPARED AS A REFERENCE GUIDE TO PROPERTY OWNERSHIP. WE BELIEVE THIS INFORMATION TO BE CORRECT AND CURRENT. HOWEVER IT IS NOT INTENDED FOR ANY LEGAL USE, WHETHER IT BE IN SALES, TRANSFERS, TRADES, LEASES OF ANY TYPE, ETC., AND DO NOT ACCEPT RESPONSIBILITY FOR ERRORS OF ANY NATURE OR OMISSIONS CONTAINED HEREIN.

new survey required for next transfer

Last Revision: 10/16/2007
T-10, R-6, 4th. Qtr. Lot 5
T-14, R-12, Sec.10
Salt Creek Twp.
Holmes County, Ohio

SC-23

