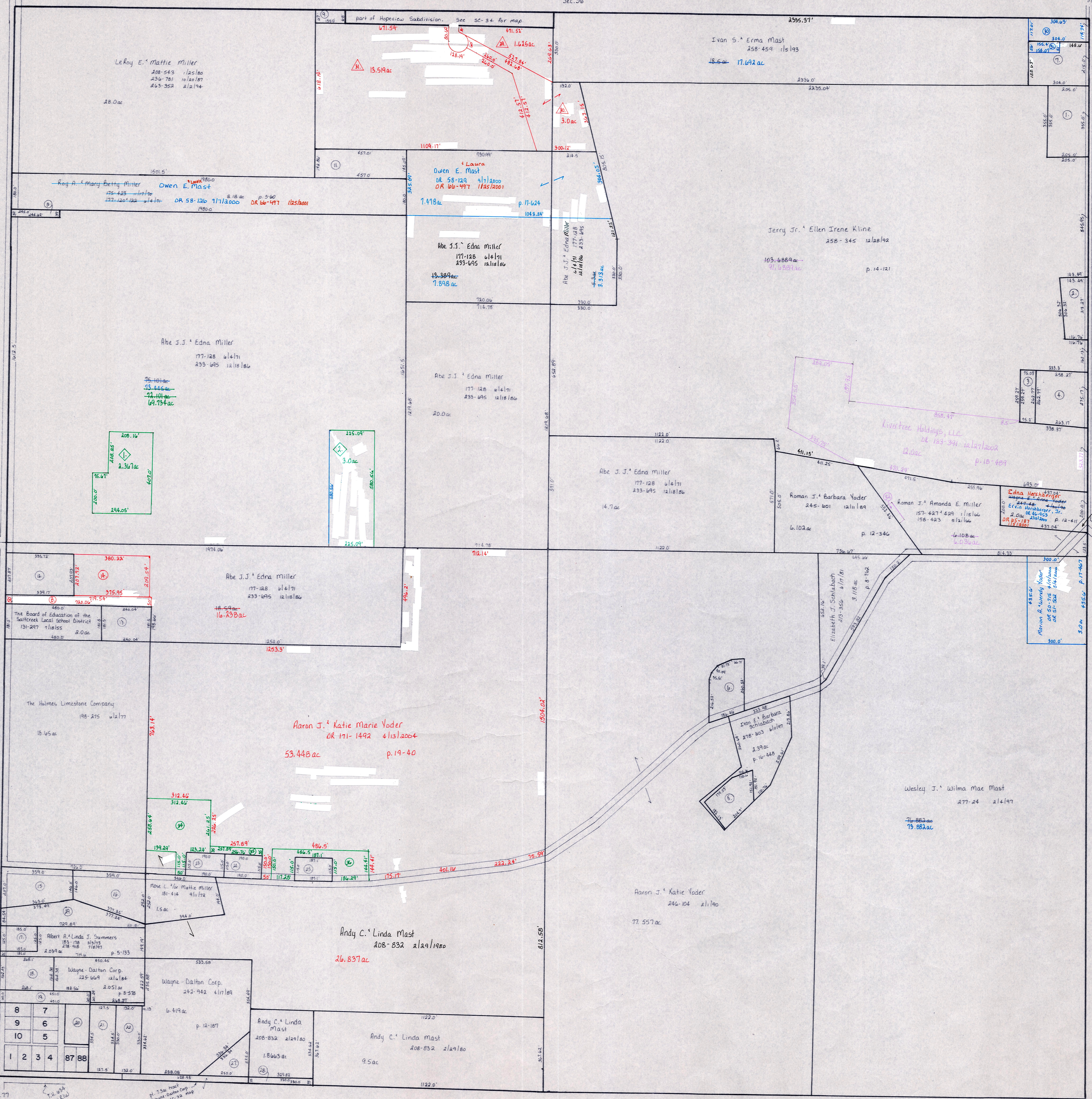


S.R. 241
and C.H. 77
60' R/W

T.H. 65A
Old T.H. 210
33' R/W

Sec. 36



T.H. 65A
Old T.H. 210
30' R/W

T.H. 65A
Old T.H. 210
33' R/W

Sec. 12

◇ A.L. Subdivision SC-33 A
Plat 2-372 Platted 11/12/2005

△ Hopewell Subdivision Allotment No. 1, Second Addition SC-33 A
Plat 2-364 Platted 8/18/2004

See SC-27 A
for Mt. Hope map

S.R. 241

C.H. 77
60' R/W

T.H. 65A
Old T.H. 210
30' R/W

LET IT BE KNOWN, THIS MAP HAS BEEN PREPARED AS A REFERENCE GUIDE TO PROPERTY OWNERSHIP. WE BELIEVE THIS INFORMATION TO BE CORRECT AND CURRENT, HOWEVER, IT IS NOT INTENDED FOR ANY LEGAL USE, WHETHER IT BE IN SALES, TRANSFERS, TRADES, LEASES OF ANY TYPE, ETC. AND DO NOT ACCEPT RESPONSIBILITY FOR ERRORS OF ANY NATURE OR OMISSIONS CONTAINED HEREIN.

T-14, R-12, Sec. 1
SALT CREEK TWP.
HOLMES CO., OHIO

SCALE: 1" = 200'

SC-33