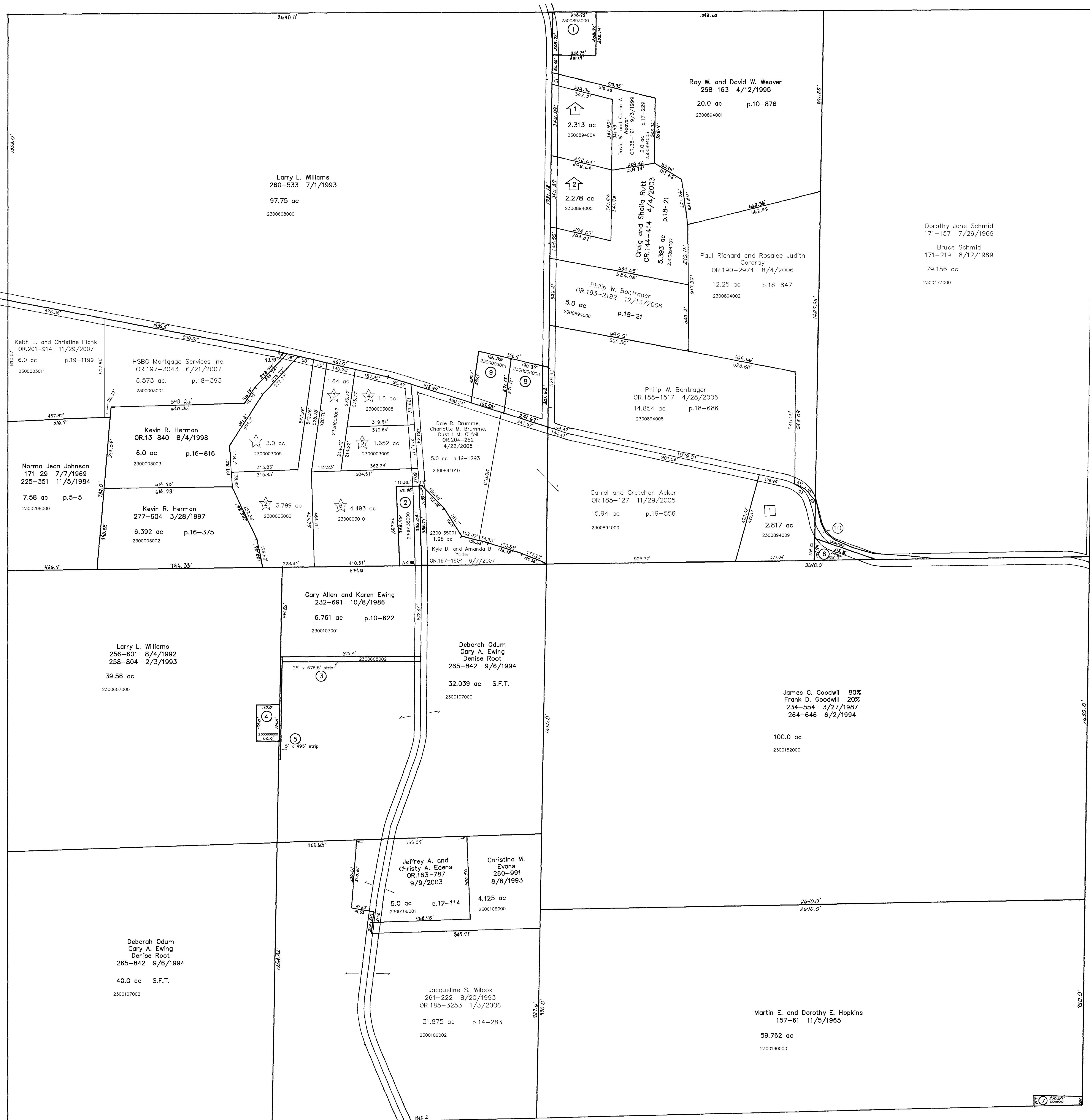


T.H. 524  
Old T.H. 334  
60' R/W

T.H. 525  
Old T.H. 334  
30' R/W

T.H. 506  
Old T.H. 317  
No R/W

T.H. 506  
Old T.H. 317  
No R/W



- East Way Subdivision  
Plat 18-826 Platted 12/2/2003  
2300894009 1 ACKER GARROL AND GRETCHEN  
OR.0188-2204 12/5/2003  
2.817 ac
- Ghost Rider Subdivision  
Plat 18-15 Platted 7/12/2001  
2300894004 1 Jonas W. Swartzentruber  
OR.197-592 5/23/2007  
2.313 ac
- 2300894005 2 BUTZER MATTHEW T. AND JENNIFER L.  
OR.0082-523 7/25/2001  
2.278 ac
- ☆ Victory Estates  
Plat 19-724 Platted 6/2/2006  
2300003000 ☆ Dan A. and Martha E. Mast  
OR.192-1710 10/20/2006  
3.0 ac p.19-724
- 2300003006 ☆ Dan A. and Martha E. Mast  
OR.192-1710 10/20/2006  
3.799 ac p.19-724
- 2300003007 ☆ Robert W. and Wattle L. Johnson  
OR.190-3000 8/4/2006  
1.64 ac p.19-724
- 2300003008 ☆ Mitchell and Deborah VanSickle  
OR.202-614 1/24/2008  
1.6 ac p.19-724
- 2300003009 ☆ Jeffrey A. and Lori A. Snelvy  
OR.189-3255 6/28/2006  
1.652 ac p.19-724
- 2300003010 ☆ Dan A. and Martha E. Mast  
OR.192-1710 10/20/2006  
4.493 ac p.19-724

- 2300893000 ① TROYER EDWARD A. AND ARIE  
OR.0083-726 8/8/2001  
1.0 ac p.10-334
- 2300135000 ② Kyle D. and Amanda B. Yoder  
OR.197-1904 8/7/2007  
0.982 ac p.17-273
- 2300608002 ③ WILLIAMS LARRY L.  
256-601 8/4/1992  
258-804 2/3/1993  
STRIP
- 2300606000 ④ WILLIAMS LARRY L.  
174-351 9/1/1970  
199-243 8/15/1977  
0.44 ac p.5-50
- 2300608001 ⑤ WILLIAMS LARRY L.  
256-601 8/4/1992  
258-804 2/3/1993  
STRIP
- 2300152001 ⑥ GOODWILL JAMES G. AND FRANK D.  
234-554 3/23/1987  
264-646 6/2/1994  
0.11 ac
- 2300190001 ⑦ SEXTON LORIE ANN BECKETT  
240-120 8/22/1988  
252-171 7/16/1991  
OR.0026-573 3/22/1999  
0.238 ac p.12-56
- 2300006000 ⑧ Andrew I. and Jodie M. Smith  
OR.180-1694 5/27/2005  
1.391 ac p.16-8

T.H. 522  
Old T.H. 414  
No R/W

Monroe Trail

T-17, R-14, Sec. 13  
RIPLEY TWP.

SCALE: 1" = 200'  
Last Revision: 4/22/2008

RP-26

LET IT BE KNOWN, THIS MAP HAS BEEN PREPARED AS A REFERENCE GUIDE TO PROPERTY OWNERSHIP. WE BELIEVE THIS INFORMATION TO BE CORRECT AND CURRENT. HOWEVER, IT IS NOT INTENDED FOR ANY LEGAL USE, WHETHER IT BE IN SALES, TRANSFERS, TRADES, LEASES OF ANY TYPE, ETC., AND DO NOT ACCEPT RESPONSIBILITY FOR ERRORS OF ANY NATURE OR OMISSIONS CONTAINED HEREIN.