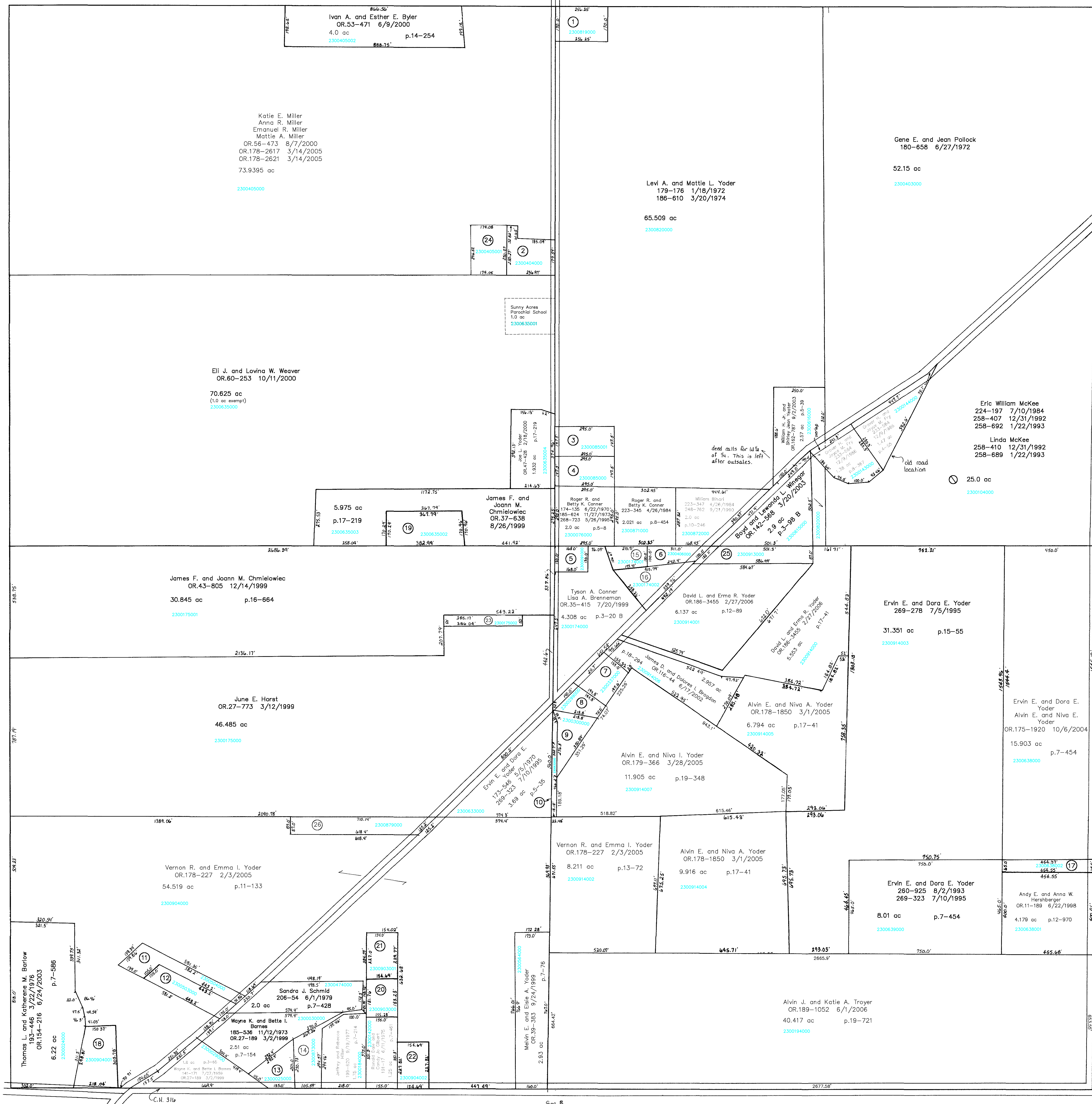


C.H. 575
40' E/W
Sec. 52



- 2300819000 ① Carlos Lee and Linda K. Kessinger
OR.187-842 3/13/2005
1.0 ac p.10-116
- 2300404000 ② RABER DAN D. AND LYDIA
202-554 7/11/1978
1.068 ac p.8-240
- 2300085001 ③ SMITH K. GREGORY
242-497 3/8/1989
1.0 ac p.5-8
- 2300085000 ④ SMITH K. GREGORY
242-497 3/8/1989
1.0 ac p.5-8
- 2300091000 ⑤ CONNER, TYSON A.
BRENNEMAN, LISA A.
OR.0035-416 7/20/1999
0.5 ac p.7-230
- 2300406000 ⑥ Andy H. and Erma A. Raber
OR.191-202 8/16/2006
0.53 ac p.8-765

- 2300337000 ⑦ COMPTON ROBERT G. AND MARGARET A.
OR.002-354 5/18/2000
0.83 ac p.4-170
- 2300299000 ⑧ STEINBAUER, TANNER J.
MARTIN, JENNIFER L.
OR.0167-1531 10/20/2003
0.56 ac p.4-170
- 2300300000 ⑨ STEINBAUER, TANNER J.
MARTIN, JENNIFER L.
OR.0167-1531 10/20/2003
0.75 ac p.7-469
- 2300632000 ⑩ YODER ERVIN E. AND DORA E.
MARTIN, JENNIFER L.
191-144 6/30/1975
269-323 7/10/1995
0.21 ac p.7-469
- 2300504000 ⑪ KARLAN BARBARA J. FKA SPITLER
199-134 8/8/1977
259-186 3/16/1993
1.0 ac

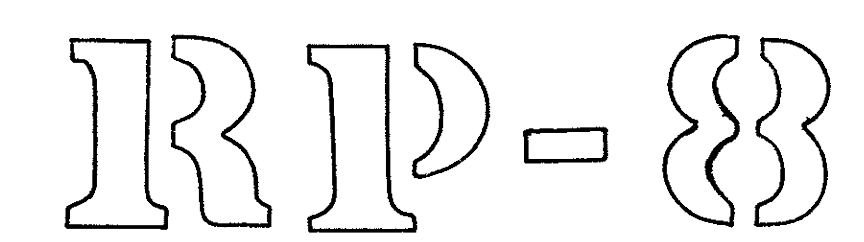
- 2300503000 ⑫ KARLAN BARBARA J. FKA SPITLER
199-134 8/8/1977
259-186 3/16/1993
1.0 ac
- 2300025000 ⑬ Evelyn P. Barnes
174-358 7/31/1970
OR.188-847 4/24/2006
0.77 ac p.5-46
- 2300873000 ⑭ Evelyn P. Barnes
223-805 6/8/1984
OR.188-847 4/24/2006
0.946 ac p.11-5
- 2300174001 ⑮ Andy H. and Erma A. Raber
OR.191-202 8/16/2006
0.49 ac p.12-73
- 2300174002 ⑯ Andy H. and Erma A. Raber
OR.191-202 8/16/2006
1.006 ac p.12-932

- 2300638002 ⑰ YODER ERVIN E. AND DORA E.
260-925 8/2/1993
269-323 7/10/1995
0.678 ac p.14-263
- 2300904001 ⑱ LANDAW RAYMOND C.
OR.0081-456 7/13/2001
1.256 ac p.14-638
- 2300635002 ⑲ CHMIELOWEC JAMES F. AND JOANN M.
OR.0037-640 8/26/1999
1.468 ac p.14-895
- 2300903000 ⑳ YODER ERVIN E. AND DORA E.
223-718 10/10/1986
227-15 4/25/1985
0.649 ac p.10-625
- 2300903001 ㉑ Vernon R. and Emma I. Yoder
OR.178-227 2/3/2005
0.809 ac p.16-433

- 2300904002 ㉒ GILBERT RONALD AND CANDY
278-425 9/29/1997
0.809 ac p.16-433
- 2300175002 ㉓ CHMIELOWEC JAMES F. AND JOANN M.
OR.0043-805 12/14/1999
0.45 ac p.17-25
- 2300405001 ㉔ RABER DAN D. AND LYDIA J.
243-499 5/26/1989
0.9925 ac p.12-222
- 2300913000 ㉕ YEATER ROBERT E. AND DELORIS J.
OR.0051-200 5/1/2000
1.08 ac p.10-445
- 2300879000 ㉖ RABER IVAN D. AND SUSAN A.
OR.0174-88 7/26/2004
1.312 ac p.10-291

T-17, R-14, Sec. 5
RIPLEY TWP.

SCALE: 1" = 200'
Last Revision: 9/26/2008



LET IT BE KNOWN, THIS MAP HAS BEEN PREPARED AS A REFERENCE GUIDE TO PROPERTY OWNERSHIP. WE BELIEVE THIS INFORMATION TO BE CORRECT AND CURRENT, HOWEVER, IT IS NOT INTENDED FOR ANY LEGAL USE, WHETHER IT BE IN SALES, TRANSFERS, TRADES, LEASES OF ANY TYPE, ETC., AND DO NOT ACCEPT RESPONSIBILITY FOR ERRORS OF ANY NATURE OR OMISSIONS CONTAINED HEREIN.