

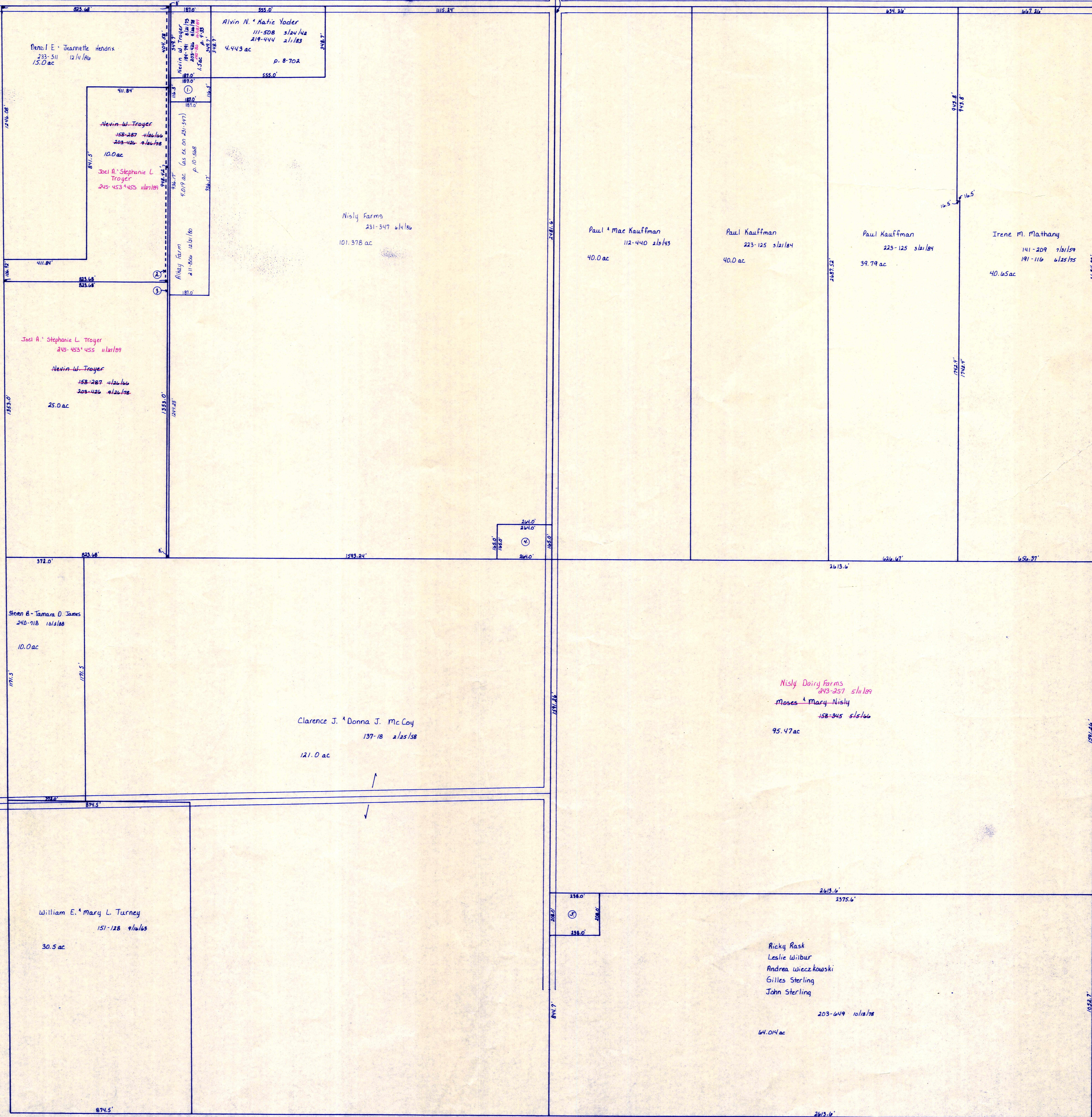
Wayne County

Wayne Co. T.H. 75

Holmes Co. T.H. 529  
Cold T.H. 540  
60' R/14

C.H. 1  
60' R/14

C.H. 1  
60' R/14



Sec. 21a

T.H. 530  
Cold T.H. 545  
No R/14

Sec. 36

- ① Melvin W. Troyer 170-337 212/14, 203-426 212/14 .5ac p. 4-202
- ② Joel A. Stephanie L. Troyer 245-453 455 212/14 8' strip SECCARD
- ③ Melvin W. Troyer 158-287 212/14, 203-426 212/14 .5ac
- ④ Marshall & Glenna Horn 126-114 212/14 1.0 ac
- ⑤ John Lee Sterling, Jr. 201-12 112/14 1.136 ac p. 8-714

T-18, R-14, Sec. 25  
RIPLEY TWP.

SCALE: 1" = 200'

LET IT BE KNOWN, THIS MAP HAS BEEN PREPARED AS A REFERENCE GUIDE TO PROPERTY OWNERSHIP. WE BELIEVE THIS INFORMATION TO BE CORRECT AND CURRENT, HOWEVER, IT IS NOT INTENDED FOR ANY LEGAL USE, WHETHER IT BE IN SALES, TRANSFERS, TRADES, LEASES OF ANY TYPE, ETC., AND DO NOT ACCEPT RESPONSIBILITY FOR ERRORS OF ANY NATURE OR OMISSIONS CONTAINED HEREIN.

RP-300