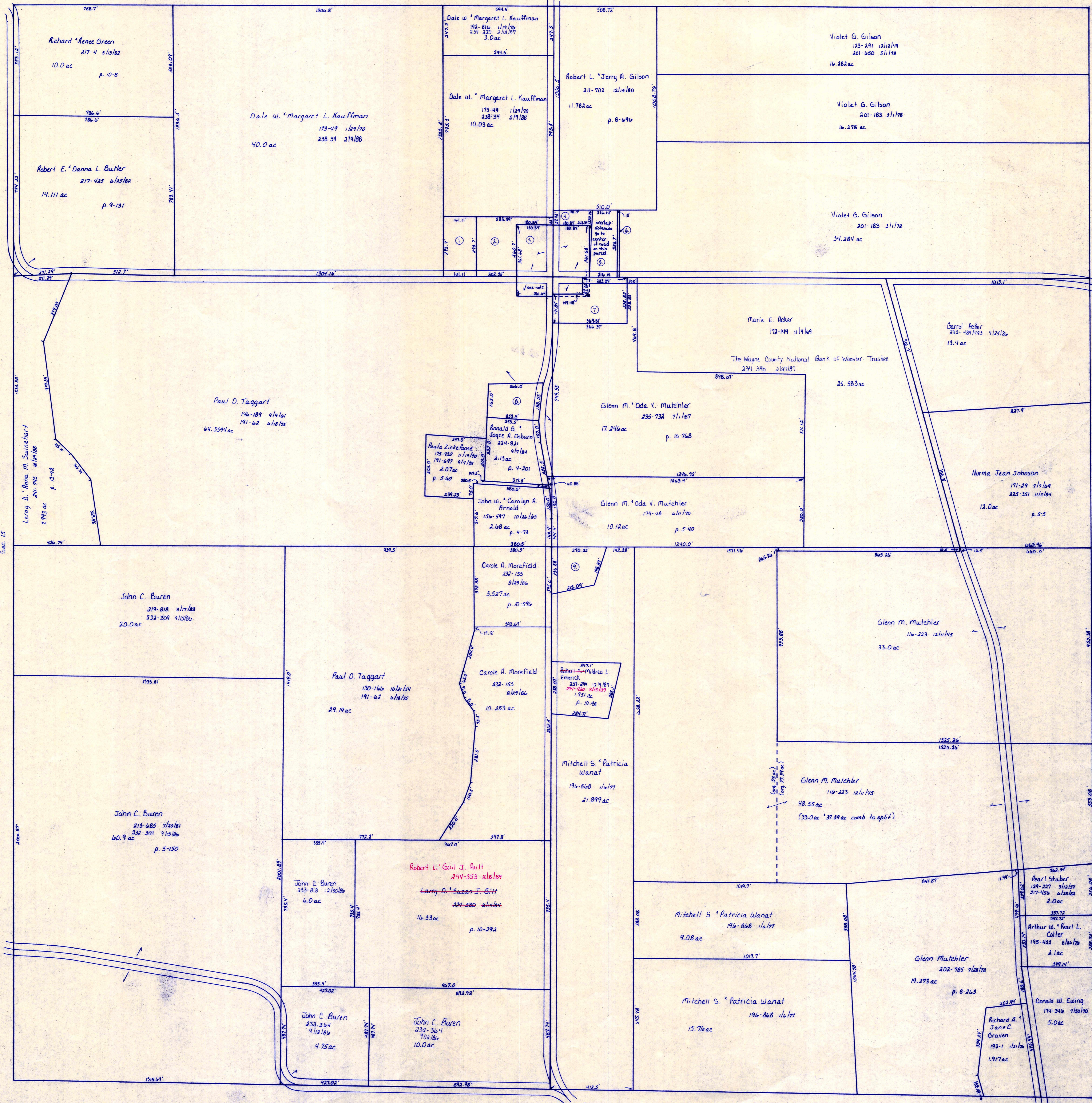


T.H. 506  
(Old T.H. 317)  
No R/W

Sec. 11 S. R. 754

T.H. 506  
(Old T.H. 317)  
No R/W

Sec. 13



Note: see deed 238-512, aliases, plat 10-447.  
Paul D. Taggart deeded 416.0 ac to  
Hopewell United Presbyterian Church  
because his deed had no exception  
for the small part of a 3.0 ac tract  
came out of a parcel on deed 146-189.  
The 3.0 ac is not carried on a  
separate card because it is completely  
overlapped by the 3.0 ac description.

- ① Paul E. Carol A. Towner 187-897 7/1/74 1.08 ac p. 7-247
- ② Trustees of East Hopewell 99-200 1/1/1884 1.504 ac
- ③ Trustees of East Hopewell Congregation 2-605 5/1/1894 3.0 ac see S.R. 5-204
- ④ Trustees of East Hopewell Congregation 23-26 4/21/1880 .27 ac
- ⑤ Trustees of Hopewell Cemetery Association 95-185 12/15/1891 2.37 ac (overlap)
- ⑥ Trustees of Hopewell Cemetery Association 95-199 1/1/1915 .09 ac
- ⑦ Jeffrey S. Nancy E. McMillen 204-685 1/16/79 1.651 ac p. 8-324
- ⑧ Robert E. Danna L. Butler 276-425 6/16/81 1.25 ac p. 7-470
- ⑨ Henry M. Rose Ulezynski 201-128 2/15/78 1.25 ac p. 8-556

T-17, R-14, Sec. 14  
RIPLEY TWP.

SCALE: 1" = 200'

LET IT BE KNOWN, THIS MAP HAS BEEN PREPARED  
AS A REFERENCE GUIDE TO PROPERTY OWNERSHIP.  
WE BELIEVE THIS INFORMATION TO BE CORRECT  
AND CURRENT, HOWEVER, IT IS NOT INTENDED  
FOR ANY LEGAL USE, WHETHER IT BE IN SALES,  
TRANSFERS, TRADES, LEASES OF ANY TYPE, ETC.,  
AND DO NOT ACCEPT RESPONSIBILITY FOR ERRORS  
OF ANY NATURE OR OMISSIONS CONTAINED HEREIN.

RP-21