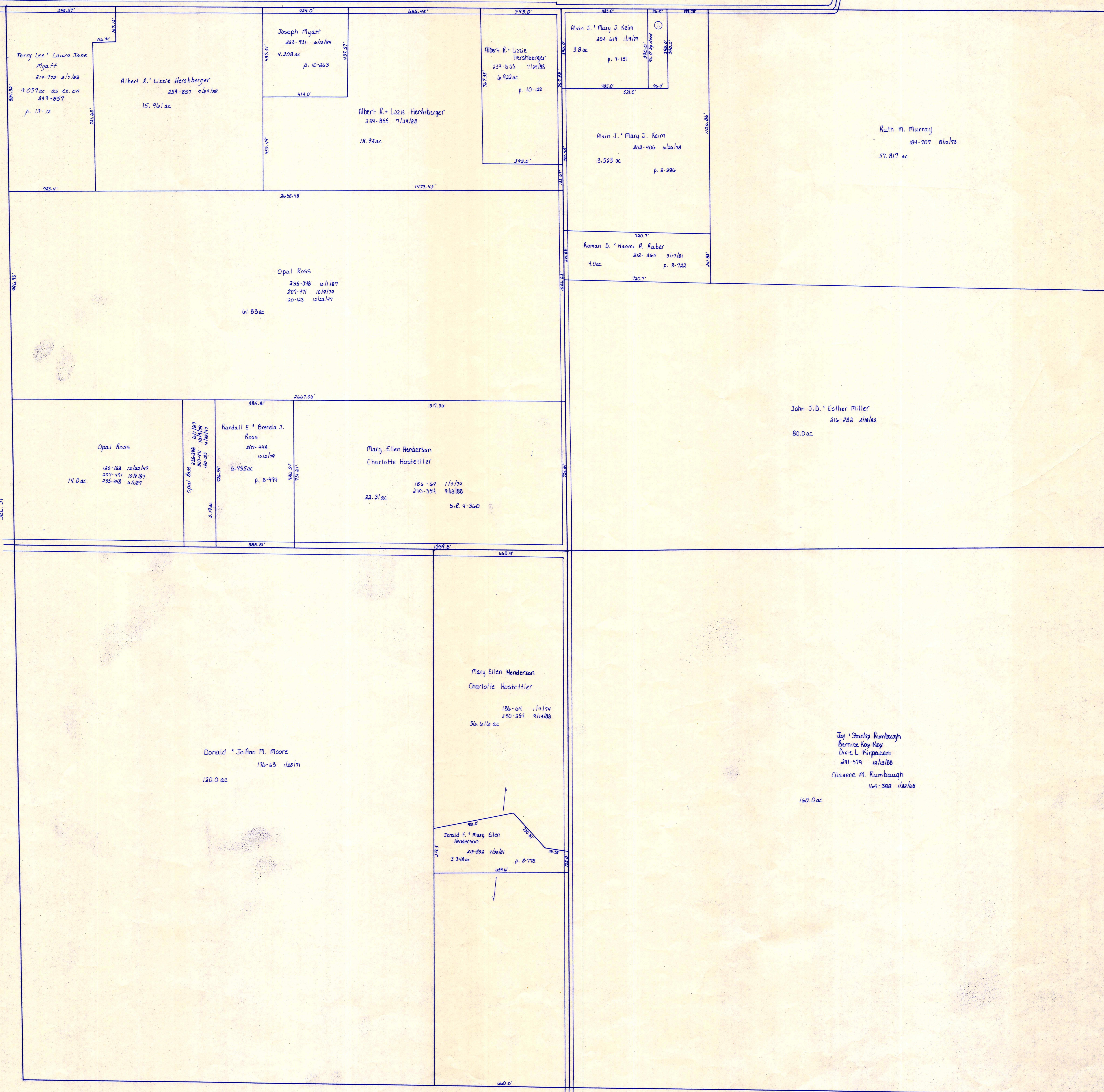


T.H. 511
Old T.H. 2
60' E/W

Sec. 29

C.H. 975
40' E/W



Sec. 31
T.H. 474
Old T.H. 374
60' E/W

Sec. 33

© Alvin J. & Mary J. Keim 204-619 11/17/81 .86 ac p. 4-172

C.H. 375
40' E/W
Sec. 5

T-18, R-14, Sec. 32
RIPLEY TWP.

SCALE: 1" = 200'

LET IT BE KNOWN, THIS MAP HAS BEEN PREPARED AS A REFERENCE GUIDE TO PROPERTY OWNERSHIP. WE BELIEVE THIS INFORMATION TO BE CORRECT AND CURRENT, HOWEVER, IT IS NOT INTENDED FOR ANY LEGAL USE, WHETHER IT BE IN SALES, TRANSFERS, TRADES, LEASES OF ANY TYPE, ETC., AND DO NOT ACCEPT RESPONSIBILITY FOR ERRORS OF ANY NATURE OR OMISSIONS CONTAINED HEREIN.

RP-9