

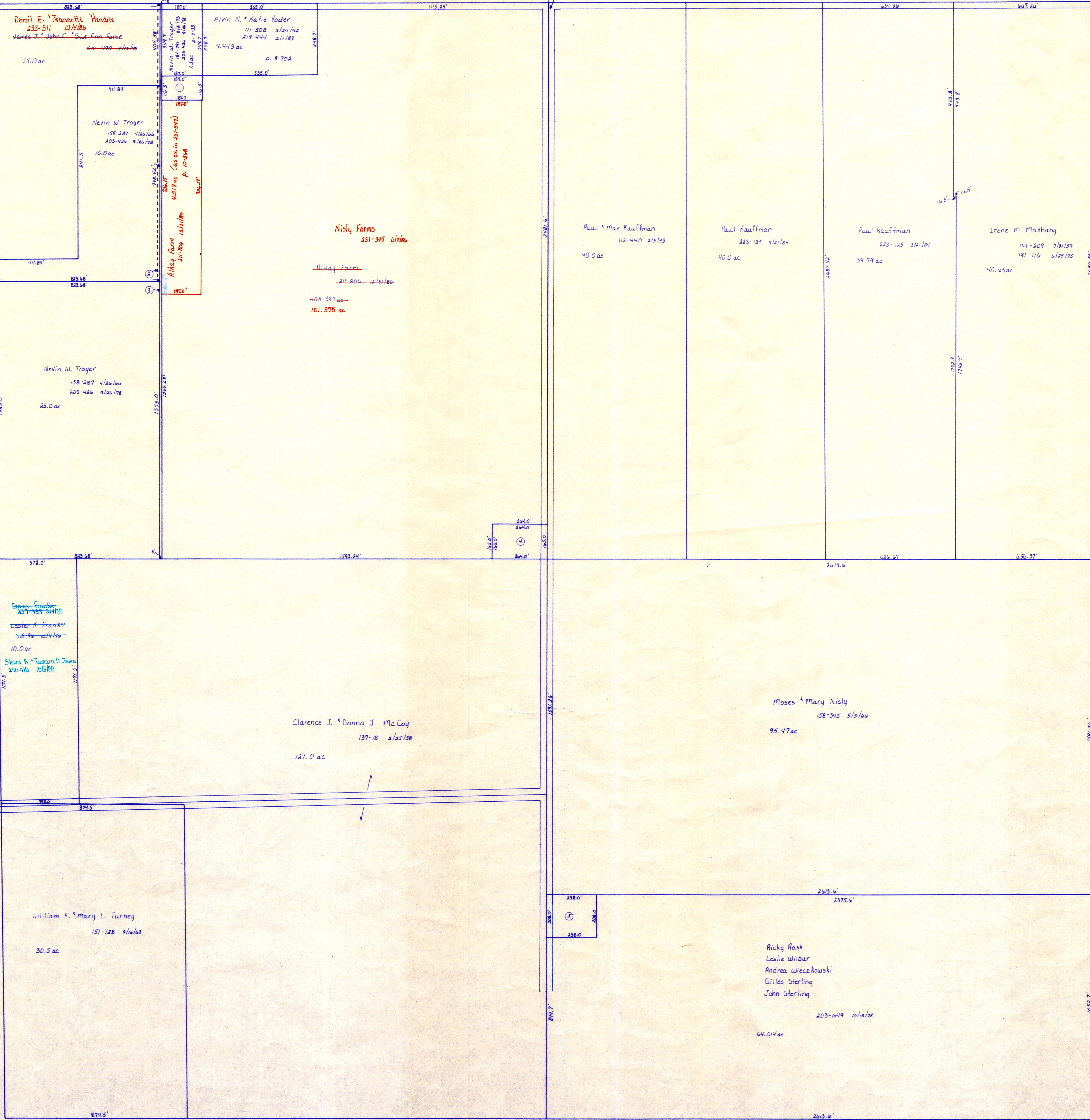
Wayne County

Wayne Co. T.H. 75

Holmes Co. T.H. 529  
(Old T.H. 340)  
60 R/W

C.H. 1  
60 R/W

C.H. 1  
60 R/W



- ① Nevin W. Troyer 170-337 12/24/64, 203-426 9/26/78 .5 ac p. 4-202
- ② Nevin W. Troyer 158-287 4/26/66, 203-426 9/26/78 8 strip SEE CARD
- ③ Nevin W. Troyer 158-287 4/26/66, 203-426 9/26/78 .5 ac
- ④ Marshall 'Glenna' Horn 126-119 1/21/51 1.0 ac
- ⑤ John Lee Sterling, Jr. 201-12 1/25/78 1.13 ac p. 8-114

T-18, R-14, Sec. 25  
RIPLEY TWP.

SCALE: 1" = 200'

LET IT BE KNOWN, THIS MAP HAS BEEN PREPARED AS A REFERENCE GUIDE TO PROPERTY OWNERSHIP. WE BELIEVE THIS INFORMATION TO BE CORRECT AND CURRENT, HOWEVER, IT IS NOT INTENDED FOR ANY LEGAL USE, WHETHER IT BE IN SALES, TRANSFERS, TRADES, LEASES OF ANY TYPE, ETC., AND DO NOT ACCEPT RESPONSIBILITY FOR ERRORS OF ANY NATURE OR OMISSIONS CONTAINED HEREIN.

PRINTED 12-23-85 RP-300