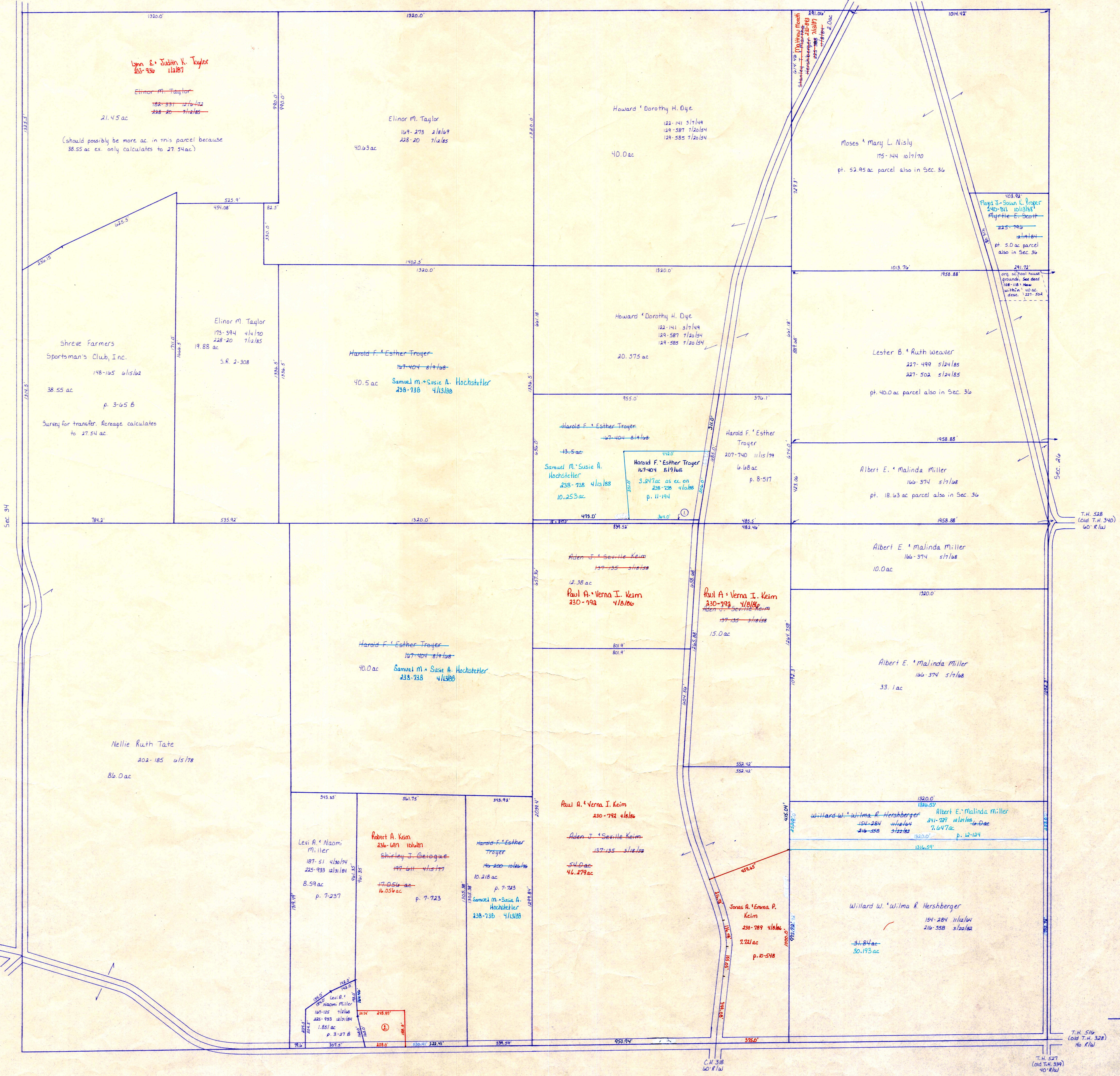


T.H. 513
(Old T.H. 337)
60' R/W

Sec. 26

C.H. 318
60' R/W

T.H. 527
(Old T.H. 339)
60' R/W



① Samuel M. & Susie A. Hochstetler 238-738 4/13/88
 Harold F. & Esther Troger 127-404 8/17/88 7.2 ac
 766 & Kathryn Long 236-627 3/26/89
 Clifford E. Hill 235-730 3/11/87 1.0 ac p. 10-738

T-18, R-14, Sec. 35
 RIPLEY TWP.

SCALE: 1" = 200'

LET IT BE KNOWN, THIS MAP HAS BEEN PREPARED AS A REFERENCE GUIDE TO PROPERTY OWNERSHIP. WE BELIEVE THIS INFORMATION TO BE CORRECT AND CURRENT, HOWEVER, IT IS NOT INTENDED FOR ANY LEGAL USE, WHETHER IT BE IN SALES, TRANSFERS, TRUSTS, LEASES OF ANY TYPE, ETC., AND DO NOT ACCEPT RESPONSIBILITY FOR ERRORS OF ANY NATURE OR OMISSIONS CONTAINED HEREIN.

PRINTED 12-23-85 RP-24