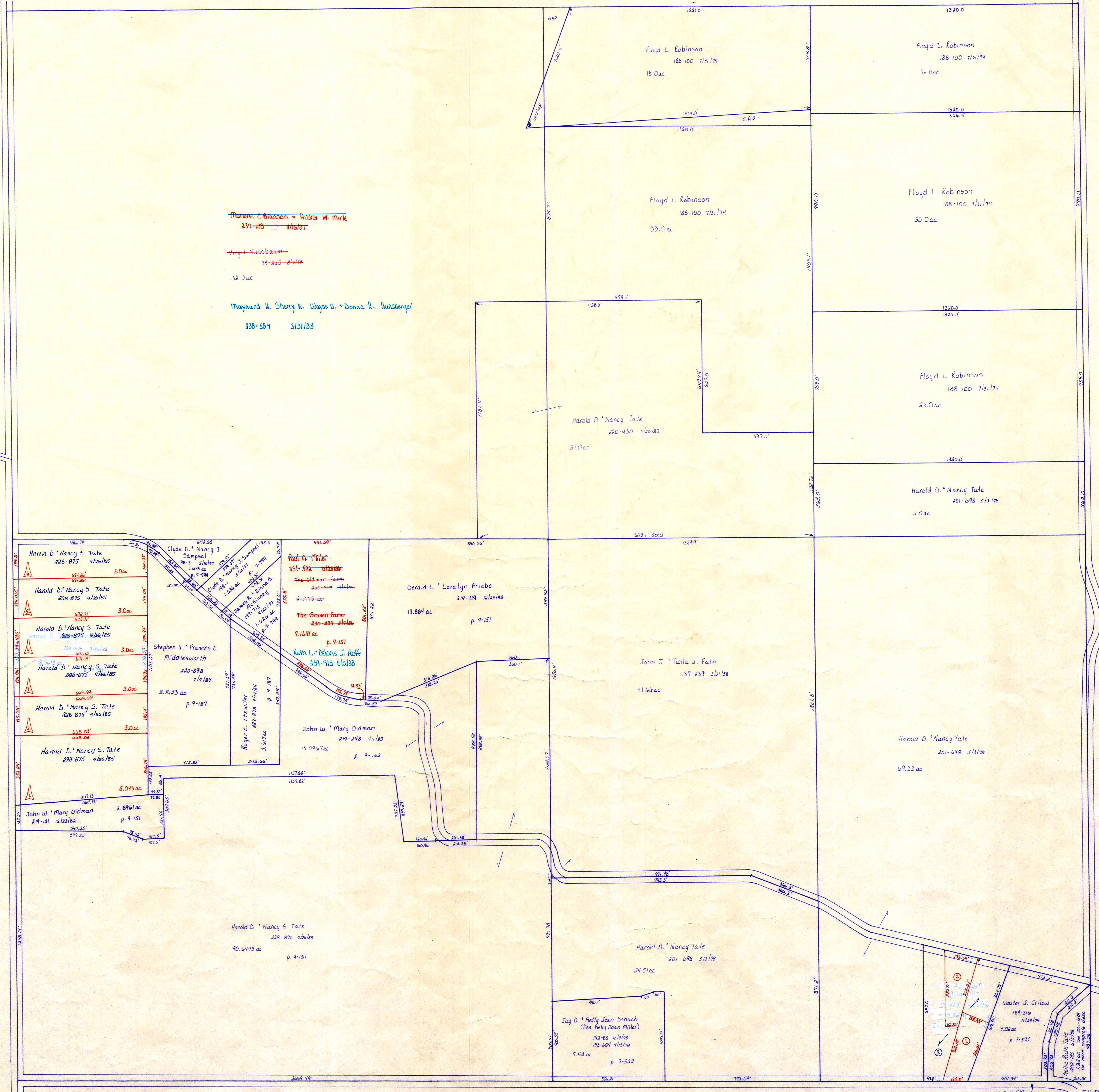


S.R. 754

Sec. 27

T.H. 513
Old T.H. 397
60' R/W



C.H. 330
Old Ch 329
35' R/W

Win Song Estates
p. 2-194

- ① Robert Nancy Bowles 232-676 10/1/76 1.0 ac p. 10-624
- ② Duane Charlene Middaugh 232-777 10/1/76 1.0 ac p. 10-628
- ③ Virgil Zella M. Middaugh 133-439 10/27/76 2.82 ac plat in file

T-18, R-14, Sec. 34
RIPLEY TWP.

SCALE: 1" = 200'

PRINTED 12-23-85 RP-19

LET IT BE KNOWN THIS MAP HAS BEEN PREPARED AS A REFERENCE GUIDE TO PROPERTY OWNERSHIP. WE BELIEVE THIS INFORMATION TO BE CORRECT AND CURRENT, HOWEVER, IT IS NOT INTENDED FOR ANY LEGAL USE, WHETHER IT BE IN SALES, TRANSFERS, TRADES, LEASES OF ANY TYPE, ETC. AND DO NOT ACCEPT RESPONSIBILITY FOR ERRORS OF ANY NATURE OR OMISSIONS CONTAINED HEREIN.