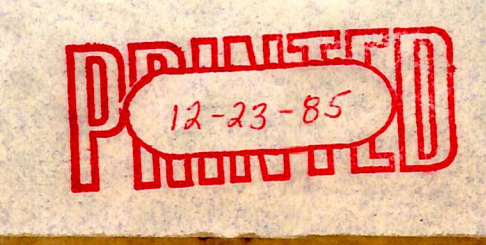


- ① Board of Trustees of the Lakeville Parochial School 154-196 10/16/64 1.0 ac p. 4-57
- ② Troyles E. & Geraldine G. Manson 226-362 2/10/65 .9945 ac p. 10-144
- ③ Andy A. & Fannie Hershberger 199-413 1/17/63 .5 ac
- ④ Kenneth & Mary L. Spreng 175-339 11/16/60 1.0 ac p. 4-19
- ⑤ Marjorie & Eugene Grossenbacher 172-390 1/6/60 1.67 ac p. 5-25
- ⑥ Roberta Kinney 179-457 5/1/52 1.0 ac p. 512
- ⑦ Lloyd W. Woodhull 154-242 8/12/65, 183-340 8/19/70, 203-831 1/19/78 3.96 ac by and

T-17, R-14, Sec. 6  
RIPLEY TWP.

SCALE: 1" = 200'



RIP-33

LET IT BE KNOWN, THIS MAP HAS BEEN PREPARED AS A REFERENCE GUIDE TO PROPERTY OWNERSHIP. WE BELIEVE THIS INFORMATION TO BE CORRECT AND CURRENT. HOWEVER, IT IS NOT INTENDED FOR ANY LEGAL USE, WHETHER IT BE IN SALES, TRANSFERS, TRADES, LEASES OF ANY TYPE, ETC., AND DO NOT ACCEPT RESPONSIBILITY FOR ERRORS OF ANY NATURE OR OMISSIONS CONTAINED HEREIN.