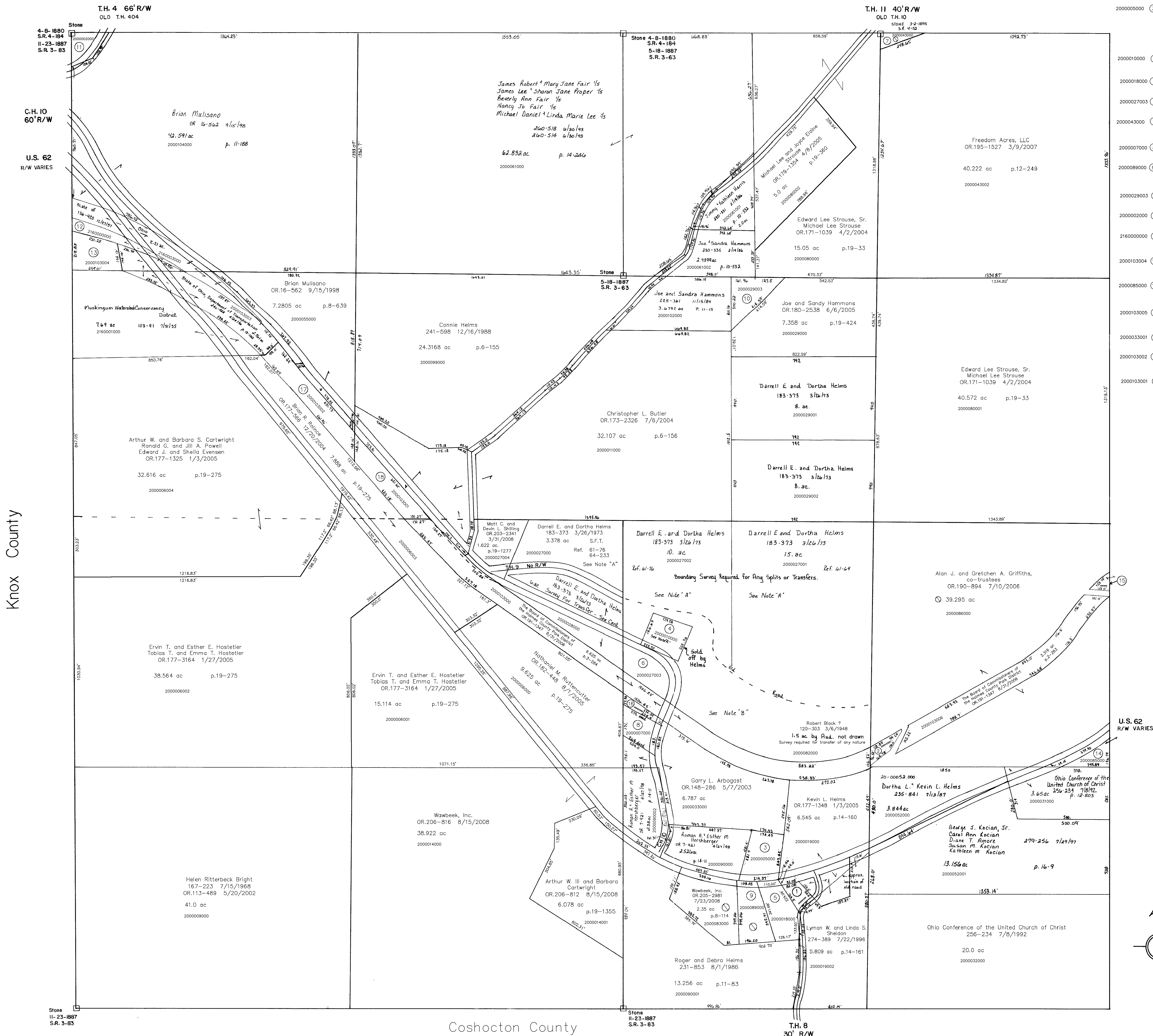


Section 16  
R-2



- 2000051000 ① BERLIN PROPERTIES INC.  
OR.0167-686 10/8/2003  
0.276 ac p.10-780
- 2000103007 ② The Board of Commissioners of the  
Holmes County Park District  
OR.191-1347 8/31/2006  
0.301 ac p.2-283
- 2000005000 ③ George J. Kocian, Jr. and  
Carol Ann Kocian and  
Diane T. Amore and  
Susan M. Martin and  
Kathleen M. Ringwalt  
OR.203-1162 3/19/2008  
OR.205-1913 7/3/2008  
1.18 ac p.14-785
- 2000010000 ④ Benjamin L. and Elizabeth A. Colopy  
OR.206-1708 8/29/2008  
1.0 ac p.8-680
- 2000018000 ⑤ Charles V. Wagner  
OR.178-1267 18/19/2005  
1.092 ac p.18-789
- 2000027003 ⑥ HELMS DARRELL E. AND DORTHA  
183-373 3/26/1973  
1.0 ac
- 2000043000 ⑦ Daniel L. and Elden and  
Ernest Mullet  
OR.207-1958 10/21/2008  
0.222 ac S.F.T.
- 2000007000 ⑧ BLUBAUGH DAVID AND PENNY  
272-857 4/1/1996  
1.0 ac S.F.T.
- 2000089000 ⑨ Edna M. Griffith  
OR.77-585 6/9/2001  
OR.205-1771 7/1/2008  
1.19 ac p.8-114 S.F.T.
- 2000029003 ⑩ HAMMONS JOE AND SANDRA  
OR.002-338 7/9/1998  
1.0 ac p.16-785
- 2000002000 ⑪ Dorothy Gill Barnes  
154-525 1/4/1965  
OR.195-2143 3/15/2007  
0.222 ac S.F.T.
- 2160000000 ⑫ MUSKINGUM WATERSHED CONSERVANCY  
DISTRICT  
103-100 8/6/1935  
0.62 ac
- 2000103004 ⑬ The Board of Commissioners of the  
Holmes County Park District  
OR.191-1347 8/31/2006  
1.017 ac p.2-284
- 2000085000 ⑭ Alan J. and Gretchen A. Griffiths,  
co-trustees  
OR.190-894 7/10/2006  
0.705 ac p.10-74
- 2000103005 ⑮ The Board of Commissioners of the  
Holmes County Park District  
OR.191-1347 8/31/2006  
0.136 ac p.2-283
- 2000033001 ⑯ ARBOGAST GARRY L.  
OR.094-395 11/27/2001  
0.213 ac p.18-785
- 2000103002 ⑰ The Board of Commissioners of the  
Holmes County Park District  
OR.191-1347 8/31/2006  
1.0 ac
- 2000103001 ⑱ The Board of Commissioners of the  
Holmes County Park District  
OR.191-1347 8/31/2006  
1.189 ac p.2-284

Section  
R-6  
24

Knox County

U.S. 62  
R/W VARIES

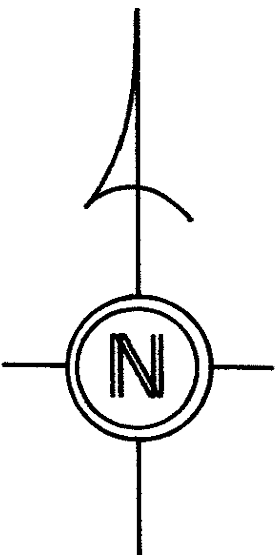
Coshocton County

NOTE "A"  
PN 2000027001 and PN 2000027002 (see DV.183-73) and PN 2000082000  
(see DV.120-303) have very poor descriptions.

NOTE "B"  
RE:2000082000 It can not be determined exactly what land is left. For more information  
see the following deeds: DV.120-303, DV.116-531, DV.100-547, DV.61-560, DV.26-376  
The old road represented by the dashed line is the location of the road at the time the  
descriptions originated in DV.61-76 & DV.61-64. (also see DV.26-376)

T-8, R-9, Sec. 25  
RICHLAND TWP.  
SCALE 1" = 200'  
Last Revision: 10/21/2008

LET IT BE KNOWN, THIS MAP HAS BEEN PREPARED  
AS A REFERENCE GUIDE TO PROPERTY OWNERSHIP.  
WE BELIEVE THIS INFORMATION TO BE CORRECT  
AND CURRENT, HOWEVER, IT IS NOT INTENDED  
FOR ANY LEGAL USE, WHETHER IT BE IN SALES,  
TRANSFERS, TRADES, LEASES OR ANY TYPE, ETC.,  
AND DO NOT ACCEPT RESPONSIBILITY FOR ERRORS  
OF ANY NATURE OR OMISSIONS CONTAINED HEREIN.



1R-1