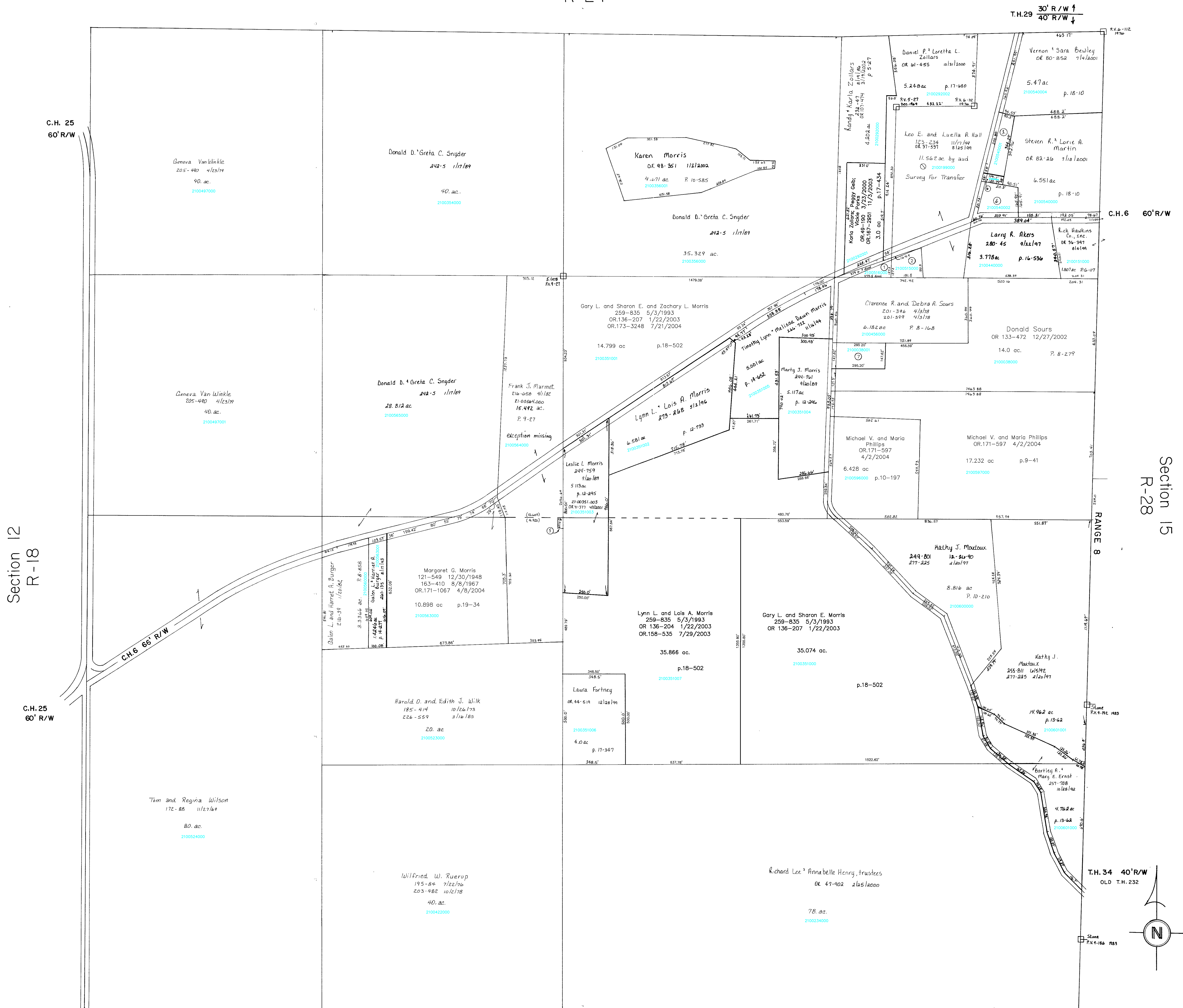


Section 10
R-24



- T.H. 24 40' R/W
OLD T.H. 299
- ① Jennifer S. Crider nka Zollars
236-257 8/21/1987
242-233 2/14/1989
OR.184-1347 10/25/2005
0.503 ac
 - ② Jennifer S. Crider nka Zollars
236-257 8/21/1987
242-233 2/14/1989
OR.184-1347 10/25/2005
0.438 ac
 - ③ WHITED JAMES D. AND VERONICA SUE
OR.0110-279 4/17/2002
0.866 ac p.14-5
 - ④ YUNGEN KIMBERLY M.
OR.0158-392 7/25/2003
1.0 ac p.14-5
 - ⑤ BUCY ELIZA B. LAST KNOWN OWNER
44-446 4/18/1878
0.037 ac
 - ⑥ YUNGEN KIMBERLY M.
OR.0158-392 7/25/2003
0.134 ac p.16-117
 - ⑦ BUTCHER JANET
OR.0133-470 12/27/2002
1.0 ac p.18-490

Section 20
R-22

T-8, R-9, Sec. 11
RICHLAND TWP.
SCALE 1" = 200'

Last Revision: 10/25/2005

LET IT BE KNOWN, THIS MAP HAS BEEN PREPARED AS A REFERENCE GUIDE TO PROPERTY OWNERSHIP. WE BELIEVE THIS INFORMATION TO BE CORRECT AND CURRENT, HOWEVER, IT IS NOT INTENDED FOR ANY LEGAL USE, WHETHER IT BE IN SALES, TRANSFERS, TRADES, LEASES OF ANY TYPE, ETC., AND DO NOT ACCEPT RESPONSIBILITY FOR ERRORS OF ANY NATURE OR OMISSIONS CONTAINED HEREIN.

R-23