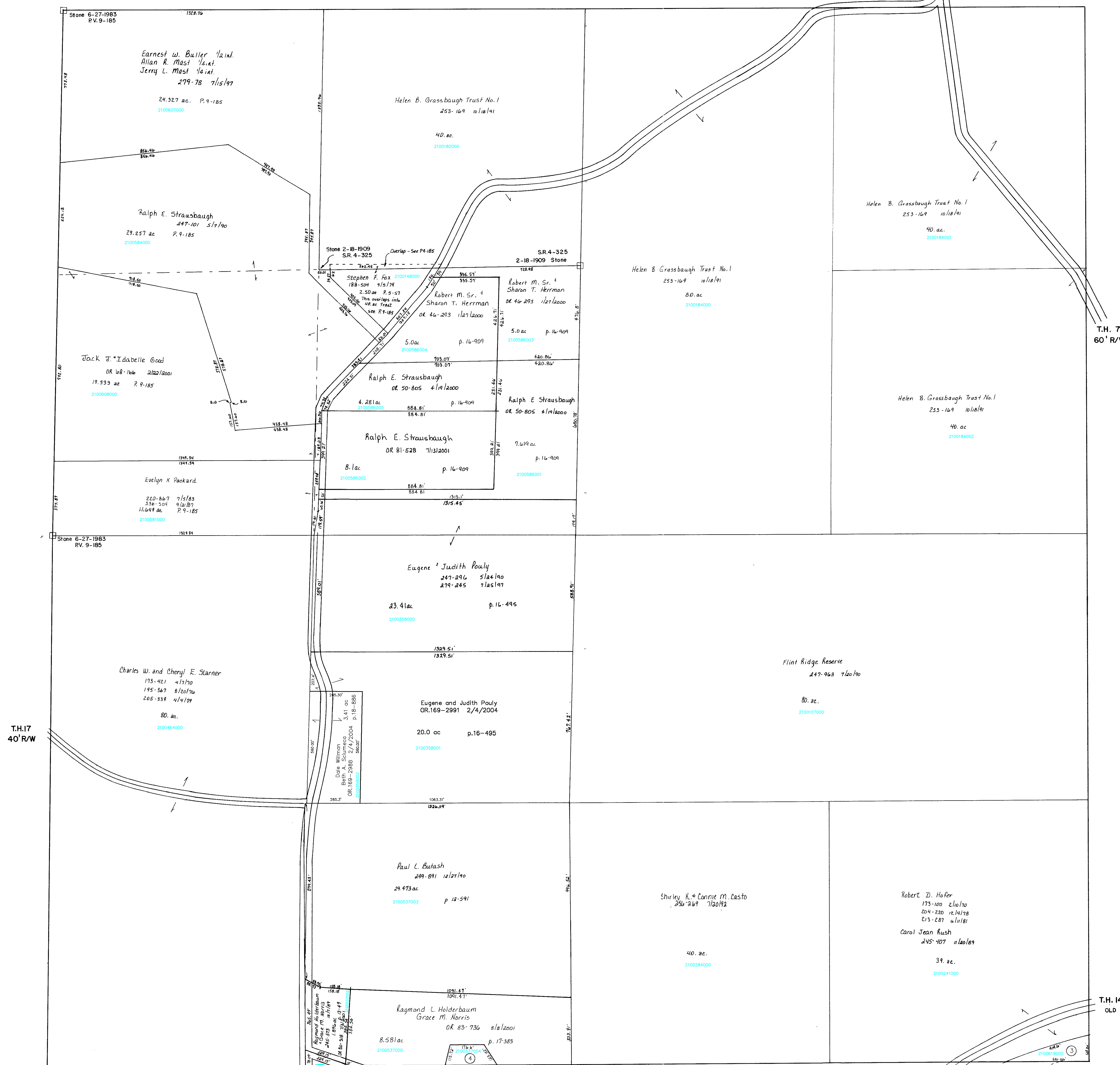


Section 4
R-10

C.H. 75 60'R/W

Section 8
R-14

Section 6
R-4



- 2100536001 ① HOLDERBAUM, RAYMOND L. NORRIS, GRACE M. 251-16 4/17/1991 OR.0080-314 7/3/2001 0.001 ac p.13-39
- 2100536000 ② MATINGLY VALORE, G. OR.0177-1219 12/29/2004 0.212 ac p.13-49
- 2100619000 ③ HOLMES COUNTY COMMISSIONERS 282-7 12/18/1997 0.854 ac p.2-281
- 2100537004 ④ ZIMMERMAN ELDORIS N. OR.0083-723 8/8/2001 0.556 ac p.18-35

CH. 75
60' R/W

T.H. 32
60' R/W
OLD T.H. 432

T.H. 14 60' R/W
OLD T.H. 404

Section 14
R-8

T-8, R-9, Sec. 7
RICHLAND TWP.
SCALE 1"=200'

Last Revision: 12/29/2004

LET IT BE KNOWN, THIS MAP HAS BEEN PREPARED AS A REFERENCE GUIDE TO PROPERTY OWNERSHIP. WE BELIEVE THIS INFORMATION TO BE CORRECT AND CURRENT. HOWEVER, IT IS NOT INTENDED FOR ANY LEGAL USE, WHETHER IT BE IN SALES, TRANSFERS, TRADES, LEASES OF ANY TYPE, ETC., AND DO NOT ACCEPT RESPONSIBILITY FOR ERRORS OF ANY NATURE OR OMISSIONS CONTAINED HEREIN.

